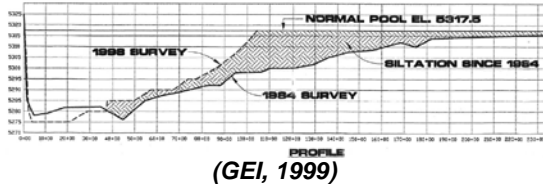


RESERVOIR SILTATION ISSUES

Storage in Kenney Reservoir:
13,800 acre-feet (1985) → 9,400 acre-feet (1999)

Reservoir surface area:
650 acres (1985) → 335 acres (2014)



Average Sediment Accumulation:
315 acre-feet / year

At this siltation rate, Kenney Reservoir will only provide effective storage for water supply for 15 years.

RECREATION & STORAGE ISSUES

The open water recreation opportunities and the Town of Rangely's water supply storage have been significantly impacted as a result of the sedimentation.



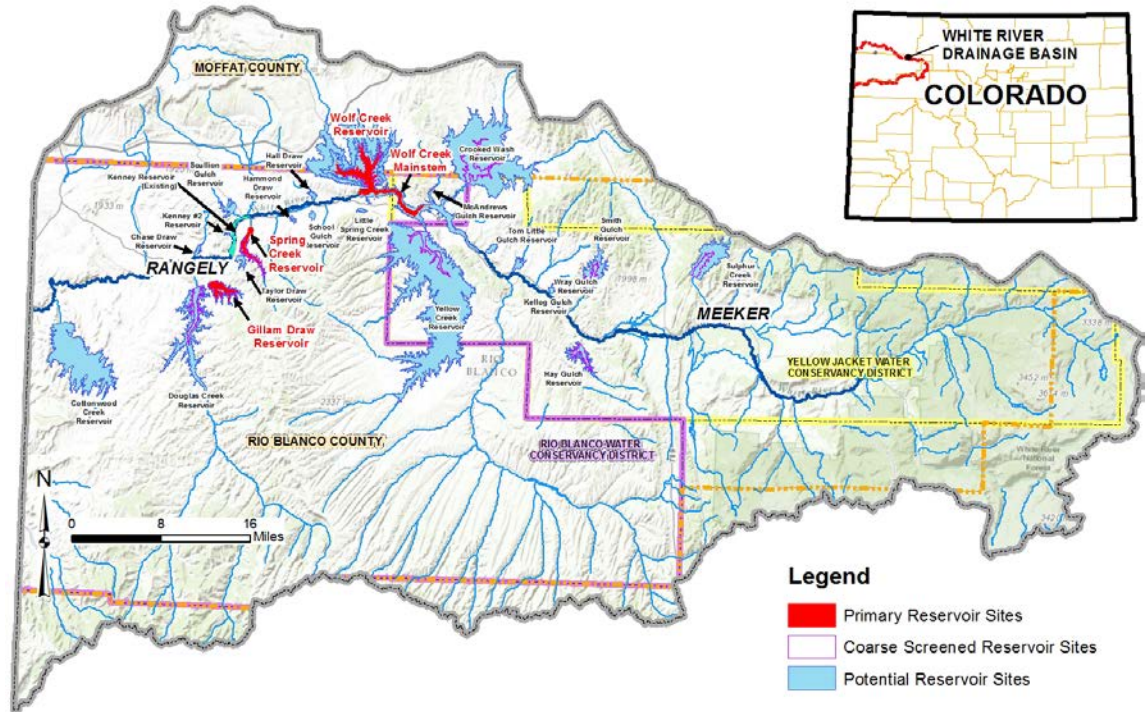
Town of Rangely's municipal supply intake during dry year.

ALTERNATIVES CONSIDERED

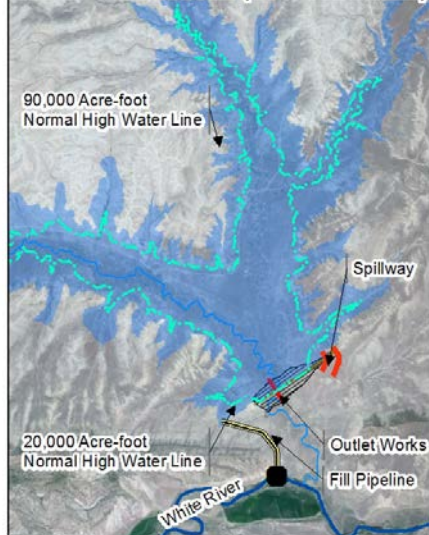
- Dredging Kenney Reservoir →
Cost > \$700 million
- Enlarge Kenney Reservoir →
*Endangered Fish Impacts
Permitting Concerns
Inevitable Future Reservoir Siltation*
- NEW RESERVOIR SITE →
PREFERRED ALTERNATIVE

WHITE RIVER BASIN MAP STUDY

23 New Reservoir Sites Identified and Screened to Three Primary Reservoir Sites



PREFERRED RESERVOIR SITE WOLF CREEK DAM (OFF-CHANNEL)



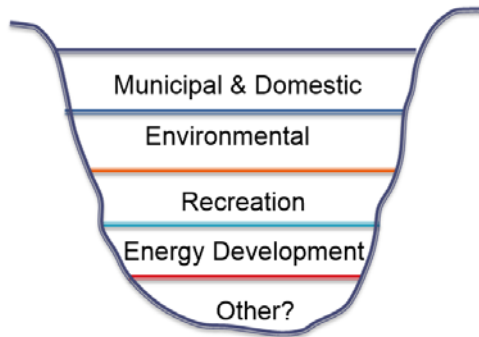
Wolf Creek Dam (Off-Channel)

- ➔ Most Favorable Capital & Operation & Maintenance (O&M) Costs of the Off-Channel Reservoirs
- ➔ No Identified Fatal Flaws (Geologic, Habitat, Wetlands, or Cultural Resources) identified in Feasibility Study
- ➔ Reservoir accessible from Moffat County and Rio Blanco County
- ➔ Can be expanded beyond 90,000 acre-feet to meet future water needs

After refinement of O&M costs, a mainstem reservoir on the White River near the Wolf Creek confluence could be a viable alternative.

THE RBWCD IS SEEKING PARTNERS TO HELP MAKE A NEW MULTI-PURPOSE RESERVOIR IN NORTHWESTERN COLORADO A REALITY.

A NEW RESERVOIR WILL BE MULTIPURPOSE:



New Reservoir to Meet Projected Needs Should have a Storage Capacity of

20,000 to 90,000 acre-feet

(Storage needs will be further refined following the recommendations from the U.S. Fish and Wildlife Service Programmatic Biological Opinion)

KEY PROJECT BENEFITS:

- Annual Tax Revenue Estimated At **\$1.1 To \$1.4 Million** for the State Of Colorado and Local Communities
- Drought protection and water supply for the Town of Rangely & Energy Industry
- Meet needed recreation demands in Northwestern Colorado.
- Provide water to meet target flows on the White River for Endangered Fish

...

Approximately **500,000 acre-feet** of water flows out of the White River annually to Utah

Total consumptive use on the White River is approximately **30,000 acre-feet** (Y/W/G Roundtable, 2014)

RIO BLANCO WATER CONSERVANCY DISTRICT HISTORY

...

RBWCD was originally formed in 1978 as part of Water Users Association No. 1 under the Colorado River Water Conservation District. In 1992 all assets of the Water Users Association No. 1 were transferred to form the RBWCD. The RBWCD constructed the Taylor Draw Dam in 1983 and 1984. In 1993 the RBWCD constructed the hydroelectric plant.



Taylor Draw Dam is located approximately six miles upstream of the Town of Rangely. The main project features of this run-of-the-river project include a powerhouse with a generating capacity of two-megawatts and Taylor Draw Dam, which forms Kenney Reservoir.

The RBWCD currently operates and maintains the hydropower plant, the dam, and recreational facilities at Kenney Reservoir.



WHITE RIVER STORAGE PROJECT



CONTACT:

RBWCD

Alden Vanden Brink, District Manager
2252 East Main Street
Rangely, CO 81648
970-675-5055
rbwcd@yahoo.com

EIS SOLUTIONS

Brad McCloud
bmcloud@eissolutions.com
970-241-3008