



Organizational Chart Colorado State Government

Legislative Branch

Senate
House of Representatives
Legislative Council
Legislative Legal Services
Office of the State Auditor
Joint Budget Committee

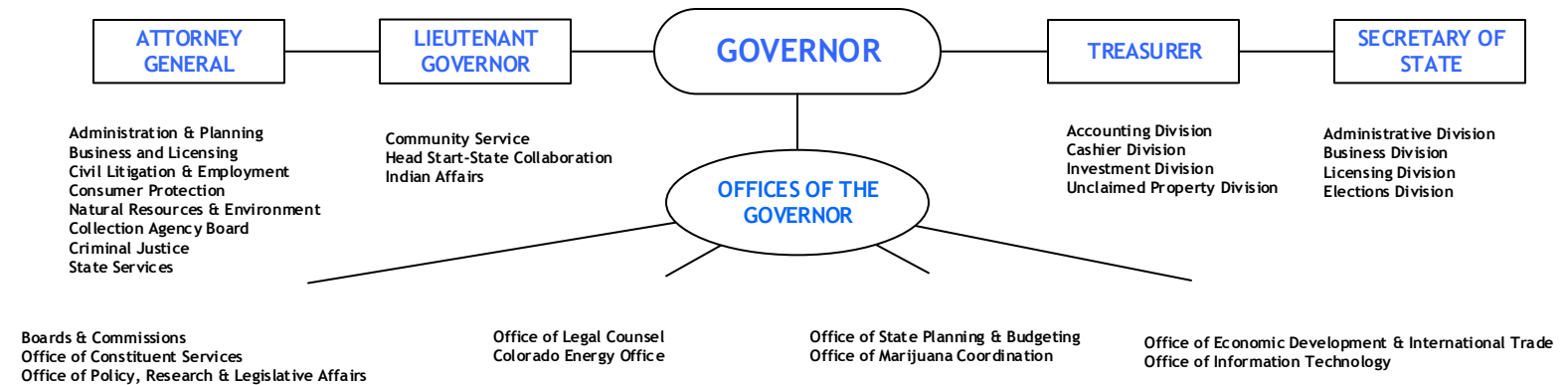
Executive Branch

Governor's Office
Lieutenant Governor's Office
Treasurer's Office
Attorney General's Office
Secretary of State's Office

Judicial Branch

Colorado State Supreme Court
Colorado State Court of Appeals
State Court Administrator's Office
State District & County Trial Courts
State Probation Services

Elected Offices



Agencies Managed by Governor Appointed Executives

Department of Agriculture

- Colorado State Fair
- Division of Animal Health
- Division of Brand Inspection
- Division of Conservation Services
- Division of Inspection & Consumer Services
- Division of Markets
- Division of Plant Industry

Department of Corrections

- Correctional Facilities/center
- Criminal Investigations/Professional Standards
- Division of Administration
- Division of Adult Parole & Community Corrections
- Division of Correctional Industries
- Division of Prisons
- Division of Public Affairs
- State Board of Parole
- Youthful Offender System

Department of Health Care Policy and Financing

- Agency Administration & Operations
- Client & Community Relations
- Medicaid & CHP+ Program Administration

Department of Human Services

- Office of Adult Disability & Rehabilitation Services
- Office of Behavioral Health & Housing
- Office of Children, Youth & Family Service
- Office of County Relations
- Office of Financial Services
- Office of Operations
- Office of Performance Improvement
- Office of Self Sufficiency
- Office of State & Veterans Nursing Homes

Department of Labor & Employment

- Division of Employment & Training
- Division of Labor
- Division of Workers' Compensation
- Division of Oil & Public Safety
- Industrial Claim Appeals Office

Department of Local Affairs

- Board of Assessment Appeals
- Division of Housing
- Division of Local Government
- Division of Property Taxation

Department of Military & Veterans Affairs

- Division of National Guard
- Division of Civil Air Patrol
- Division of Veterans Affairs

Department of Natural Resources

- Board of Land Commissioners
- Colorado Parks and Wildlife
- Division of Forestry
- Division of Reclamation Mining & Safety
- Division of Water Resources
- Geological Survey
- Oil & Gas Conservation Commission
- Water Conservation Board

Department of Personnel & Administration

- Division of Central Services
- Division of Finance & Procurement
- Division of Human Resources
- Office of Administrative Courts
- State Controller's Office
- State Personnel Board

Department of Public Health & Environment

- Air Pollution Control Division
- Center for Health and Environmental Data
- Chief Medical Officer
- Disease Control & Environmental Epidemiology Division
- Environmental Health and Sustainability Division
- Hazardous Materials & Waste Management Division
- Health Facilities and Emergency Medical Services Division
- Laboratory Services Division
- Prevention Services Division
- Water Quality Control Division

Department of Public Safety

- Colorado Bureau of Investigation
- Colorado Integrated Criminal Justice System
- Colorado School Safety Resource Center
- Colorado State Patrol
- Division of Criminal Justice
- Division of Fire Prevention and Control
- Division of Homeland Security and Emergency Management

Department of Regulatory Agencies

- Division of Banking
- Division of Civil Rights
- Division of Financial Services
- Division of Insurance
- Division of Professions and Occupations
- Division of Real Estate
- Division of Securities
- Office of Consumer Counsel
- Public Utilities Commission

Department of Revenue

- Division of Motor Vehicles
- Enforcement Division
- Lottery Division
- Taxation Division

Department of Transportation

- Colorado Tolling Enterprise
- Division of Accounting & Finance
- Division of Aeronautics
- Division of Engineering & Maintenance
- Division of Human Resources & Administration
- Division of Transportation Development
- Office of Policy
- Office of Public Relations

Department of Education*

- State Board of Education**
- Achievement and Strategy Division
- Accountability, Performance & Support Division
- Assessment Unit
- Communications Division
- Innovation, Choice & Engagement Division
- School Finance and Operations Division

Department of Higher Education**

- College Assist., College Invest
- College in Colorado
- Colorado Commission on Higher Education
- Community Colleges
- Division of Private Occupational Schools
- Four-year Colleges
- GEAR UP
- Local District Colleges, Area Vocational Schools
- Research Universities
- State Historical Society (History Colorado)

*NOTE: The Commissioner of Education is selected by the State Board of Education

**Note: CDHE has coordinating authority for these institutions; each is governed by a separate board, with all community colleges under the State Board for Community Colleges & Occupational Education