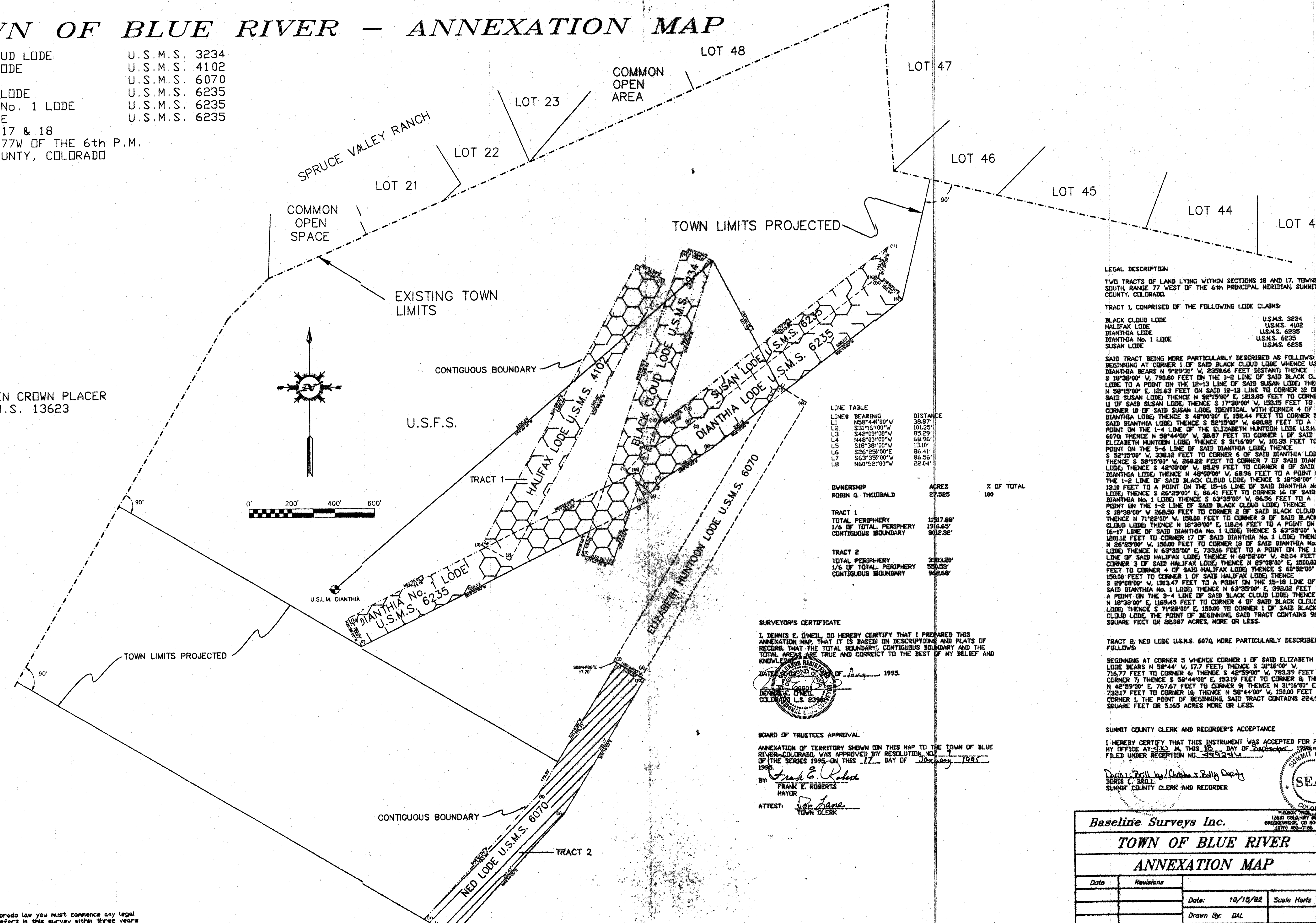
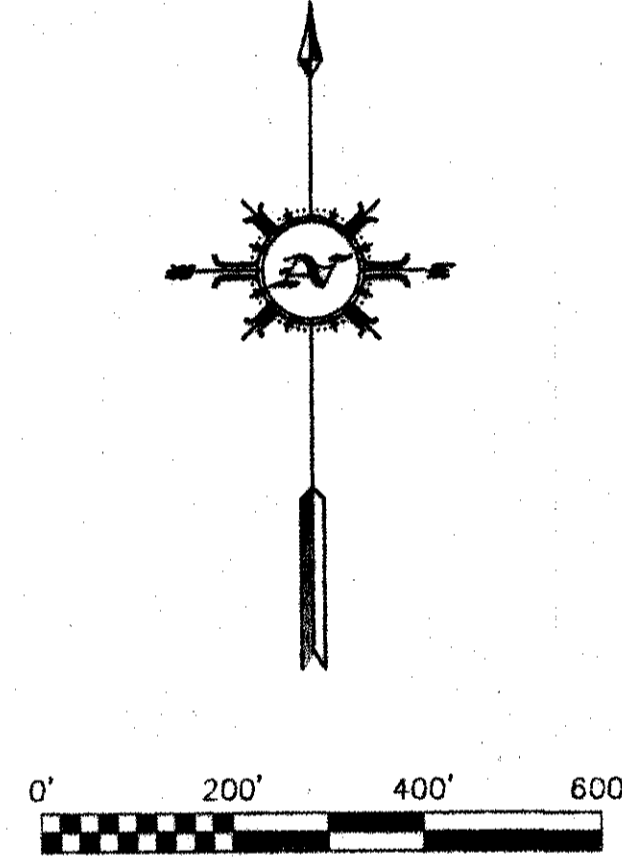


TOWN OF BLUE RIVER - ANNEXATION MAP

BLACK CLOUD LODE U.S.M.S. 3234
 HALIFAX LODE U.S.M.S. 4102
 NED LODE U.S.M.S. 6070
 DIANTHIA LODE U.S.M.S. 6235
 DIANTHIA No. 1 LODE U.S.M.S. 6235
 SUSAN LODE U.S.M.S. 6235
 SECTIONS 17 & 18
 T. 7S., R. 77W OF THE 6th P.M.
 SUMMIT COUNTY, COLORADO

GOLDEN CROWN PLACER
 U.S.M.S. 13623



LINE TABLE

LINE#	BEARING	DISTANCE
L1	N58°44'00"W	38.87'
L2	S31°16'00"W	101.25'
L3	S42°00'00"W	85.29'
L4	N48°00'00"W	58.96'
L5	S18°38'00"W	13.10'
L6	S26°23'00"E	86.41'
L7	S63°35'00"W	86.56'
L8	N60°52'00"W	22.04'

OWNERSHIP	ACRES	% OF TOTAL
ROBIN G. THEIBALD	27.585	100
TRACT 1		
TOTAL PERIPHERY	1151.88'	
1/6 OF TOTAL PERIPHERY	191.65'	
CONTIGUOUS BOUNDARY	902.32'	
TRACT 2		
TOTAL PERIPHERY	3303.20'	
1/6 OF TOTAL PERIPHERY	550.53'	
CONTIGUOUS BOUNDARY	962.68'	

SURVEYOR'S CERTIFICATE
 I, DENNIS E. O'NEIL, DO HEREBY CERTIFY THAT I PREPARED THIS ANNEXATION MAP THAT IT IS BASED ON DESCRIPTIONS AND PLATS OF RECORD, THAT THE TOTAL BOUNDARY, CONTIGUOUS BOUNDARY AND THE TOTAL AREA ARE TRUE AND CORRECT TO THE BEST OF MY BELIEF AND KNOWLEDGE.
 DATE OF SURVEY: 10/15/92
 DENNIS E. O'NEIL
 COLORADO L.S. 2394

BOARD OF TRUSTEES APPROVAL
 ANNEXATION OF TERRITORY SHOWN ON THIS MAP TO THE TOWN OF BLUE RIVER, COLORADO, WAS APPROVED BY RESOLUTION NO. 17 OF THE SERIES 1995 ON THIS 17 DAY OF January, 1995.
 BY: Frank E. Robertz
 FRANK E. ROBERTZ
 MAYOR
 ATTEST: [Signature]
 TOWN CLERK

LEGAL DESCRIPTION
 TWO TRACTS OF LAND LYING WITHIN SECTIONS 18 AND 17, TOWNSHIP 7 SOUTH, RANGE 77 WEST OF THE 6th PRINCIPAL MERIDIAN, SUMMIT COUNTY, COLORADO.
 TRACT 1, COMPRISED OF THE FOLLOWING LODE CLAIMS:
 BLACK CLOUD LODE U.S.M.S. 3234
 HALIFAX LODE U.S.M.S. 4102
 DIANTHIA LODE U.S.M.S. 6235
 DIANTHIA No. 1 LODE U.S.M.S. 6235
 SUSAN LODE U.S.M.S. 6235

SAID TRACT BEING MORE PARTICULARLY DESCRIBED AS FOLLOWS: BEGINNING AT CORNER 1 OF SAID BLACK CLOUD LODE WHENCE U.S.L.M. DIANTHIA BEARS N 9°29'31" W, 2350.66 FEET DISTANT; THENCE S 10°38'00" W, 790.80 FEET ON THE 1-2 LINE OF SAID BLACK CLOUD LODE TO A POINT ON THE 12-13 LINE OF SAID SUSAN LODE; THENCE N 58°15'00" E, 121.63 FEET ON SAID 12-13 LINE TO CORNER 12 OF SAID SUSAN LODE; THENCE N 52°15'00" E, 1213.05 FEET TO CORNER 11 OF SAID SUSAN LODE; THENCE S 17°38'00" W, 153.15 FEET TO CORNER 10 OF SAID SUSAN LODE, IDENTICAL WITH CORNER 4 OF SAID DIANTHIA LODE; THENCE S 48°00'00" E, 152.44 FEET TO CORNER 5 OF SAID DIANTHIA LODE; THENCE S 52°15'00" W, 680.82 FEET TO A POINT ON THE 1-4 LINE OF THE ELIZABETH HUNTON LODE U.S.M.S. 6070; THENCE N 58°44'00" W, 38.87 FEET TO CORNER 1 OF SAID ELIZABETH HUNTON LODE; THENCE S 31°16'00" W, 101.25 FEET TO A POINT ON THE 5-6 LINE OF SAID DIANTHIA LODE; THENCE S 52°15'00" W, 268.22 FEET TO CORNER 7 OF SAID DIANTHIA LODE; THENCE S 42°00'00" W, 85.29 FEET TO CORNER 8 OF SAID DIANTHIA LODE; THENCE N 48°00'00" W, 68.96 FEET TO A POINT ON THE 1-2 LINE OF SAID BLACK CLOUD LODE; THENCE S 18°38'00" W, 13.10 FEET TO A POINT ON THE 15-16 LINE OF SAID DIANTHIA No. 1 LODE; THENCE S 26°23'00" E, 86.41 FEET TO CORNER 16 OF SAID DIANTHIA No. 1 LODE; THENCE S 63°35'00" W, 86.56 FEET TO A POINT ON THE 1-2 LINE OF SAID BLACK CLOUD LODE; THENCE S 18°38'00" W, 268.50 FEET TO CORNER 2 OF SAID BLACK CLOUD LODE; THENCE N 71°22'00" W, 150.00 FEET TO CORNER 3 OF SAID BLACK CLOUD LODE; THENCE N 18°38'00" E, 118.24 FEET TO A POINT ON THE 15-17 LINE OF SAID DIANTHIA No. 1 LODE; THENCE S 63°35'00" W, 150.12 FEET TO CORNER 17 OF SAID DIANTHIA No. 1 LODE; THENCE N 26°23'00" W, 150.00 FEET TO CORNER 18 OF SAID DIANTHIA No. 1 LODE; THENCE N 63°35'00" E, 733.16 FEET TO A POINT ON THE 1-3 LINE OF SAID HALIFAX LODE; THENCE N 60°52'00" W, 22.04 FEET TO CORNER 3 OF SAID HALIFAX LODE; THENCE N 29°08'00" E, 1500.00 FEET TO CORNER 4 OF SAID HALIFAX LODE; THENCE S 60°52'00" E, 150.00 FEET TO CORNER 1 OF SAID HALIFAX LODE; THENCE S 29°08'00" W, 1313.47 FEET TO A POINT ON THE 15-18 LINE OF SAID DIANTHIA No. 1 LODE; THENCE N 63°35'00" E, 392.02 FEET TO A POINT ON THE 3-4 LINE OF SAID BLACK CLOUD LODE; THENCE N 18°38'00" E, 168.45 FEET TO CORNER 4 OF SAID BLACK CLOUD LODE; THENCE S 71°22'00" E, 150.00 FEET TO CORNER 1 OF SAID BLACK CLOUD LODE, THE POINT OF BEGINNING SAID TRACT CONTAINS 962,091 SQUARE FEET OR 22.087 ACRES, MORE OR LESS.

TRACT 2, NED LODE U.S.M.S. 6070, MORE PARTICULARLY DESCRIBED AS FOLLOWS:
 BEGINNING AT CORNER 5 WHENCE CORNER 1 OF SAID ELIZABETH HUNTON LODE BEARS N 58°44' W, 17.7 FEET; THENCE S 31°16'00" W, 716.77 FEET TO CORNER 6; THENCE S 42°59'00" W, 783.39 FEET TO CORNER 7; THENCE S 58°44'00" E, 153.19 FEET TO CORNER 8; THENCE N 42°59'00" E, 767.67 FEET TO CORNER 9; THENCE N 31°16'00" E, 732.17 FEET TO CORNER 10; THENCE N 58°44'00" W, 150.00 FEET TO CORNER 1; THE POINT OF BEGINNING SAID TRACT CONTAINS 224,997 SQUARE FEET OR 5.165 ACRES, MORE OR LESS.

SUMMIT COUNTY CLERK AND RECORDER'S ACCEPTANCE
 I HEREBY CERTIFY THAT THIS INSTRUMENT WAS ACCEPTED FOR FILING IN MY OFFICE AT 10:15 AM, THIS 15 DAY OF January, 1995.
 FILED UNDER RECEPTION NO. 95152-14
 DENNIS E. O'NEIL
 SUMMIT COUNTY CLERK AND RECORDER



Baseline Surveys Inc.		P.O. BOX 788 13641 GOLDENWAY BRECKENRIDGE, CO 80424 (303) 453-7168	
TOWN OF BLUE RIVER			
ANNEXATION MAP			
Date	Revisions	Date:	10/15/92 Scale Horiz 1" = 200'
		Drawn By:	DAL
		DWG File:	1432ANNK

NOTICE: According to Colorado law you must commence any legal action based upon any defect in this survey within three years after you discover such defect. In no event, may any action based upon any defect in this survey be commenced more than ten years from the date of the certification shown hereon.