

Colorado Assessment Tool Project

Review and Discussion of Assessment Work Flow and Modules
Discussion of Proposed Pilot Steps



Agenda

- Review and Discussion of Assessment
 - Considerations
 - Work Flow
- Discussion of the Proposed Pilot Steps
- Discussion/Questions/Comments



Assessment Considerations



Assessment Components

Phase

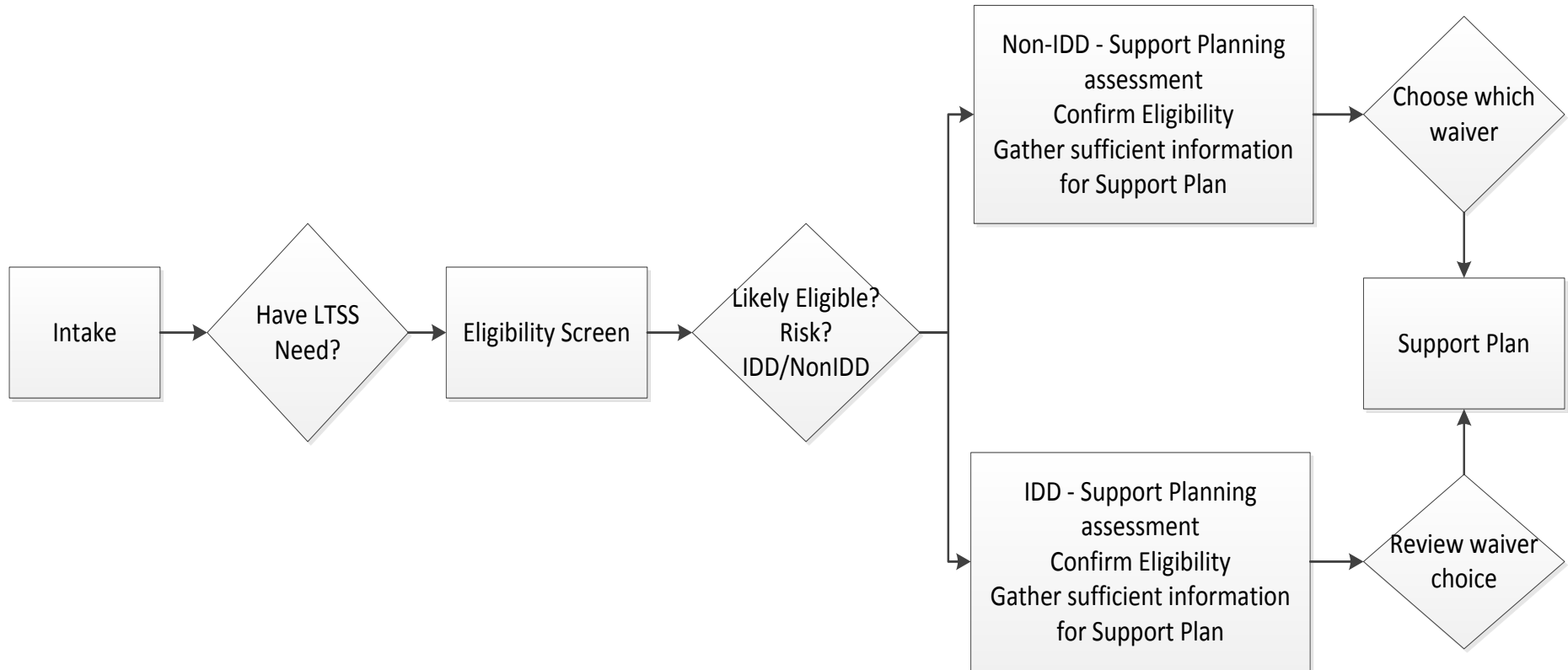
<p style="writing-mode: vertical-rl; transform: rotate(180deg);">Modules</p>	<div style="display: flex; justify-content: space-around; align-items: flex-start;"> <div style="border: 1px solid gray; padding: 5px; margin: 5px;">Initial Intake</div> <div style="border: 1px solid gray; padding: 5px; margin: 5px;">Eligibility Screen</div> <div style="border: 1px solid gray; padding: 5px; margin: 5px;">Person-Centered Module</div> <div style="border: 1px solid gray; padding: 5px; margin: 5px;">Support Planning Assessment (Non-IDD)</div> <div style="border: 1px solid gray; padding: 5px; margin: 5px;">Support Planning Assessment (IDD)</div> </div> <div style="border: 1px solid gray; padding: 5px; margin: 10px auto; width: 150px; text-align: center;">SIS</div>
<p style="writing-mode: vertical-rl; transform: rotate(180deg);">Pilots</p>	<div style="display: flex; justify-content: space-around; align-items: center;"> <div style="border: 1px solid gray; padding: 5px; margin: 5px;">Initial Intake and eligibility screen</div> <div style="border: 1px solid gray; padding: 5px; margin: 5px;">Person-Centered Module</div> <div style="border: 1px solid gray; padding: 5px; margin: 5px;">Support Planning Assessment (Non-IDD)</div> <div style="border: 1px solid gray; padding: 5px; margin: 5px;">Support Planning Assessment (IDD)</div> </div>
<p style="writing-mode: vertical-rl; transform: rotate(180deg);">Core Objectives</p>	<div style="display: flex; justify-content: space-around; align-items: flex-start;"> <div style="border: 1px solid gray; padding: 5px; margin: 5px;"> <p>Initial Intake</p> <p>Ensure makes appropriate triage</p> </div> <div style="border: 1px solid gray; padding: 5px; margin: 5px;"> <p>Eligibility Screen</p> <ul style="list-style-type: none"> -Minimize impact on eligibility determinations -make appropriate referrals for full assessment -Workflow makes sense -Time to complete </div> <div style="border: 1px solid gray; padding: 5px; margin: 5px;"> <p>Person-Centered Module</p> <p>Ensure gathers information that is meaningful to participant, and other users</p> </div> <div style="border: 1px solid gray; padding: 5px; margin: 5px;"> <p>Support Planning Assessment (Non-IDD)</p> <p>Ensure supplies sufficient information for support planning</p> <ul style="list-style-type: none"> -Information for resource allocation? -Time to complete Workflows? </div> <div style="border: 1px solid gray; padding: 5px; margin: 5px;"> <p>Support Planning Assessment (IDD)</p> <p>Ensure supplies sufficient information for support planning</p> <ul style="list-style-type: none"> -Time to complete -Interaction with the SIS </div> </div>



Assessment Flow



High Level Assessment Process Flow



Discussion of Piloting Process



Proposed Pilot Approach

Approach

LOC pilot

Statistically Valid sample to understand impact of changes in LOC determinations
EBD, IDD, MH
Priority 1

Initial Intake & eligibility screen process pilot

Sufficient sample of SEP and CCB to provide adequate information about content and processes:
Priority 2

Person-Centered Module Pilot:

Sufficient sample of SEP and CCB to provide adequate information about content and processes:
Priority 2

Support Planning Assessment (Non-IDD)

Sufficient sample to provide adequate information about content and processes:
Priority 3

Support Planning Assessment (IDD)

Sufficient sample to provide adequate information about content and processes:
Priority 3



Proposed Purposes of this Group

- Propose to use this forum to obtain input from assessors as we develop tools
 - Will also obtain input using stakeholder meeting – anticipate getting more hands-on guidance here
 - Should we invite others to participate?
- Will need to recruit assessors who will be willing to participate in the pilots
 - Guidance for the best approaches for recruitment



Input and Questions?

