

Introduction to the Children's LTSS Assessment Redesign Effort

March Stakeholder Meeting 1
March 21, 2016



COLORADO
Department of Health Care
Policy & Financing

Our Mission

Improving health care access and outcomes for the **people** we serve while demonstrating sound stewardship of financial **resources**



Agenda

- Introduction and purpose of meeting
- Approach for obtaining stakeholder input
- Process for developing the Tool
- Adapting the Tool for children
- Discussion of the Personal Story module
- Wrap-up and next steps



Introduction

- Introduction of the HCPF Assessment team
- The Department worked with HCBS Strategies and stakeholders to develop a comprehensive assessment tool for adults with LTSS needs
 - Tool based on previously developed items from Minnesota's MnCHOICES and CMS' FASI/CARE effort
 - Customized to meet the needs of the Coloradans



Purpose of Stakeholder Meetings

- Inform stakeholders representing children about the work completed thus far
- Provide stakeholders with opportunity to provide input into the new assessment process
- Ensure tool adaptations for children make sense for Colorado



Stakeholder Input Into the Development of the Adult Process

- Stakeholder input included:
 - Input from community members and staff from over 15 agencies
 - Advocacy groups and individuals with disabilities strongly represented in this group
 - Conducted 21 stakeholder meetings
- Developed a blog to share information and collect feedback:
<http://coassessment.blogspot.com/>
- Made major changes to the modules and process as a result of stakeholder input
- Now conducting meetings throughout state to share progress and gather feedback



Approach for Stakeholder Feedback for Adaptations for Children

- Tentatively have 4 sets of 2 meetings for detailed input, each with an afternoon (1-4p) meeting on the first day and morning (9-12a) meeting on the second day, similar to the March visit:
 - March 21-22
 - April 11-12
 - May 10-11
 - June 6-7
- Will first provide an overview of the approach for adapting the adult process for children and an overview of the assessment process



Approach for Stakeholder Feedback for Adaptations for Children (cont.)

- Approach for each module:
 1. Description of purpose and overall structure of the module
 2. Item by item walkthrough
 3. Items requiring more than 5 minutes of discussion will be tabled until the end of the review of the entire module
 4. Will continually review whether more time is needed and if the schedule is lighter at the end of meeting for additional discussion.
 5. Following meeting will start with review of proposed changes that were not clearly resolved or required additional work from the previous meeting.



Problems with Current Assessment Process

- Discussions with State staff and onsite CCB and SEP review revealed:
 - There are over 30 tools used by State and local agencies to support the access process
 - Includes core tools and applications (e.g., 100.2) and home grown tools to collect supplemental information
 - Tools were collecting similar information in different ways, leading to issues with reliability and validity
 - Limited scope of assessment (i.e., simple eligibility determination)



Problems with Current Assessment Process (cont.)

- The operational review also revealed that the current process:
 - Missed key information necessary for support planning
 - Did not allow for information to be entered into a shared electronic database
 - Participants had to tell their story to each agency
 - Did not collect information on natural supports, caregivers, or areas of interest



Goals for the Redesign

- New assessment must be a process rather than a single tool
- Integrated and comprehensive process will:
 - Support efforts to integrate waivers and develop programs that cross populations (e.g., Community First Choice)
 - Eliminate need for most of the other existing tools
 - Allow Colorado to comply with CMS rules and guidelines
 - Support efforts to increase assessors capabilities by providing stronger tools to go along with increased training requirements



Outcomes of the Redesigned Process

- The new process will:
 - Drive Systems Change- More person-centered, enhanced self-direction, greater coordination of services, foster employment
 - Determine eligibility for a variety of programs targeting individuals with a wide range of disabilities
 - Need process that can be used for multiple populations
 - Support emerging changes to operations
 - Intake module to help route people to best option
 - Emerging separation of eligibility assessment vs. support planning and ongoing case management



Outcomes of the Redesign (cont.)

- The new process will:
 - Support objective and empirically-based person-centered budgets
 - Guide development of the support plan
 - Enhance quality management efforts, including quality of life/participant experience data



Approach for Developing the Process



Approach for Developing the Adult Process

- Understand current LTSS assessment process
- Identify how processes can be improved (redesign goals and outcomes)
- Determine which tools should serve as the basis for the new assessment process
- Customize the tools to meet Colorado's needs
- Pilots for components of the process
- Develop plans for Person-centered Support Plan, automation, full-scale testing, and statewide implementation of the new process



Reviewing Tool Options

- The State and stakeholders reviewed many assessment tools, including:
 - Tools developed to establish standardization nationally:
 - interRAI
 - Continuity Assessment Record and Evaluation (CARE)
 - Cross-population tools developed by states:
 - Wisconsin Functional Screen/Assessment
 - MnCHOICES
 - Massachusetts Real Choice Functional Needs Assessment
 - Comprehensive Assessment Reporting Evaluation (CARE-Washington State)
 - IDD specific tool:
 - Support Intensity Scale (SIS)
 - Inventory for Client and Agency Planning (ICAP)



Decision: Tools to Use as Basis for Assessment

- After careful review, State and stakeholders decided to use the following components of the tools as the basis for Colorado's new assessment process:
 - CMS' CARE tool (Later changed to FASI)
 - Standardized items throughout the tool (e.g., functioning, health, etc.)
 - Minnesota's MnCHOICES comprehensive assessment
 - Modular format would serve as basis for CO process
 - Person-centered items and modules (e.g., Personal Story)
 - Items CARE/FASI did not contain (e.g., Psychosocial/Behaviors)



CMS' CARE/FASI

- Sponsored by CMS to improve the standardization of assessment data and payment across post acute-care settings
- Measures health and functioning (e.g., ADL and IADL)
- Does not include care planning components
- Validated and reliable data items for post-acute care
- Tool and materials are in the public domain
- Limited set of CARE items have been transitioned into the FASI item set
 - FASI items will be tested by CO and other states under TEFT effort



MnCHOICES

- Developed as a universal assessment tool for all LTSS populations
- Modular design with some required modules and others completed depending on answers to trigger questions
- Includes person-centered components
 - Includes modules on employment, caregivers, and capacity for self-direction
- Used for Minnesota-specific eligibility determination, support planning and resource allocation
- Public domain



Customizing the Tools for Adults in Colorado

- Core components of CARE/FASI were integrated into MnCHOICES items and format
 - Focused on developing
 - Content that would support person-centered goals and support planning
 - Items with face reliability and validity
- Paper versions of each module were developed and reviewed with State and stakeholders
- Intake Screen and Personal Story module were piloted
 - Held focus groups with pilot staff and participants
 - Adapted the tools based upon feedback



Next Steps

- Develop Person-centered Support Plan that takes advantage of new assessment
- Automate and test the new process
- Statewide rollout



Adapting the Tool for Children



Background Research for Adapting the Process for Children

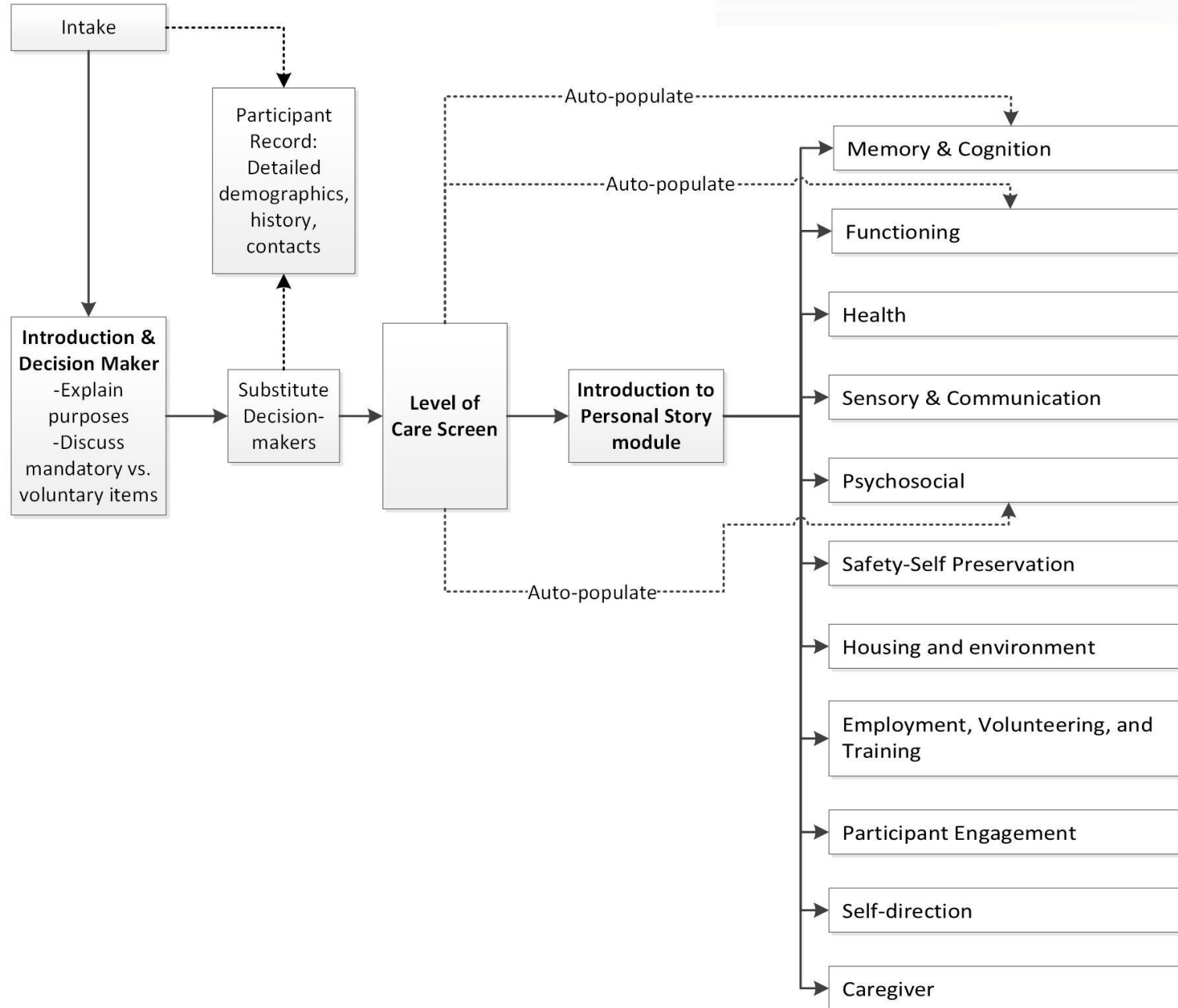
- Reviewed other tools that were adapted for both children and adults:
 - interRAI- Home Care (HC) for adults and Peds for children
 - Wisconsin LTC Functional Screen- Adult and children's assessment, with children broken into age specific categories (e.g., 0-6 months)
 - MnCHOICES- Age-specific items
- Reviewed current CO applications/assessments for children (e.g., PAT, PCAT)
- Developed crosswalk- Review



Approach for Customizing the Process for Children

- Wanted to keep similar to adult tool to allow:
 - Easier transition from child to adult assessment
 - Better data for evaluation and continuous quality improvement
- Drafted item and module updates from national best practices
 - Added/updated/removed items to ensure content tailored for children
 - Modified modules to direct language at child or parent/guardian
- Extensive reviews with Department staff
- Drafts will now be reviewed with stakeholders





Module Review- Personal Story



Overview of the Personal Story Module

- Purpose of the module
 - Initiate assessment with comfortable conversation
 - Assessors develop a picture of the individual beyond diagnoses and deficits
 - Supports the development of person-centered goals
 - Address CMS Person-centered Planning Requirements
- Goal is to have the module automated so participants can update their Personal Story as it evolves



Two Versions of the Module

- The two versions are directed at different audiences
 - **Parents/Guardians-** Used for participants younger than age 8 and those 8 and older who may not wish to or have ability to lead the discussion
 - Participant should still be involved in conversation to extent possible
 - **Participants-** Used for participants age 8 and older who wish to and have the ability to lead the discussion
- Content is the same, tailored language differs



PC Module Components

Personal
Profile

People
Important to
Me

My Support
Planning
Meeting

My Future

Preferences

Next Steps



Ongoing Communication

- To share draft materials, meeting information, and minutes as well as facilitate ongoing conversation, we have developed a blog:
 - <http://coassessment.blogspot.com/>
- Have questions or feedback?
 - Post directly on the blog
 - Email andrew@hcbs.info



March 22 Stakeholder Meeting

- Will be in room 10A from 9a-12p
- Will review the following:
 - Intake Screen
 - Introduction & Decision Makers
 - Participant Record
- Will also provide an overview of the Eligibility Determination module
- Call-in information can be found on the Next Meeting page of the blog:
 - <http://coassessment.blogspot.com/p/upcoming-meeting-information.html>



Questions?



COLORADO

Department of Health Care
Policy & Financing