

# Florence, Colorado Community Profile

## (2014 Data)

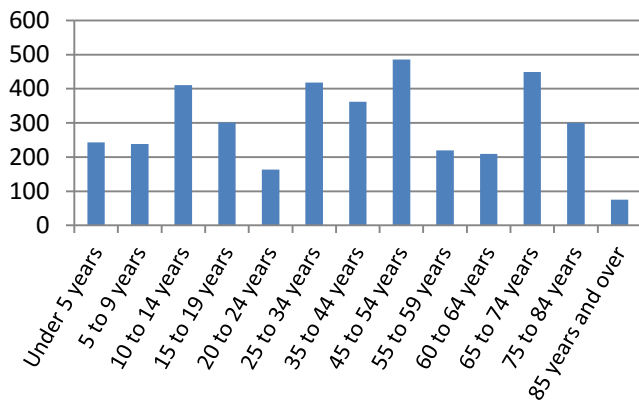
### Population

|              | Florence | Fremont County |
|--------------|----------|----------------|
| <b>Total</b> | 3,875    | 46,879         |
| Male         | 1,916    | 27,405         |
| Female       | 1,959    | 19,474         |

### Age of Population

|                   |            |            |
|-------------------|------------|------------|
| <b>Median Age</b> | 39.4 years | 43.3 years |
|-------------------|------------|------------|

### Florence Population by Age Group



### Projected Population

Population is expected to grow at 1.3% per year.

| Year | Fremont County |
|------|----------------|
| 2020 | 50,190         |
| 2025 | 53,876         |
| 2030 | 57,348         |

### Income

|                         | Florence | Fremont County |
|-------------------------|----------|----------------|
| Median Household Income | \$34,119 | \$40,569       |
| Mean Household Income   | \$46,135 | \$52,361       |
| Median Family Income    | \$50,536 | \$50,433       |
| Mean Family Income      | \$57,772 | \$62,389       |
| Per capita income       | \$18,445 | \$19,161       |

### Education

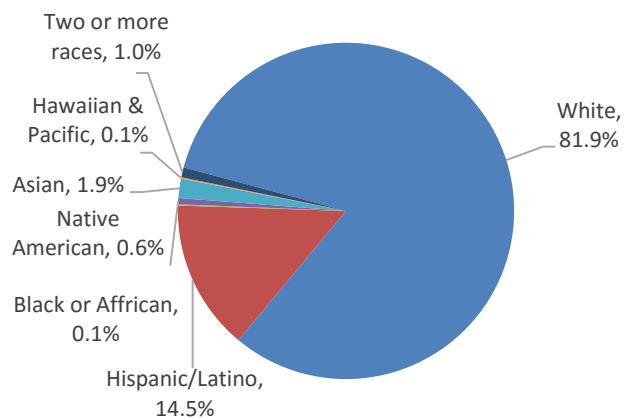
|                                      | Florence | Fremont County |
|--------------------------------------|----------|----------------|
| <b>School Enrollment<sup>1</sup></b> |          |                |
| Nursery school                       | 37       | 576            |
| Kindergarten                         | 30       | 539            |
| Elementary School                    | 547      | 3,546          |
| High School (9-12)                   | 238      | 2,116          |
| College or grad school               | 186      | 1,882          |

### Educational Attainment<sup>1</sup>

(Population 25 years or older)

|                       | Florence | Fremont County |
|-----------------------|----------|----------------|
| High school graduate  | 752      | 13,025         |
| Some college          | 868      | 9,071          |
| Associate degree      | 207      | 2,373          |
| Bachelor degree       | 310      | 3,549          |
| Graduate/professional | 106      | 2,124          |

### Race and Ethnicity (Florence)



### Stable Community

87.2% of Florence's residents have lived within Florence, or Fremont County, for at least 1 Year.

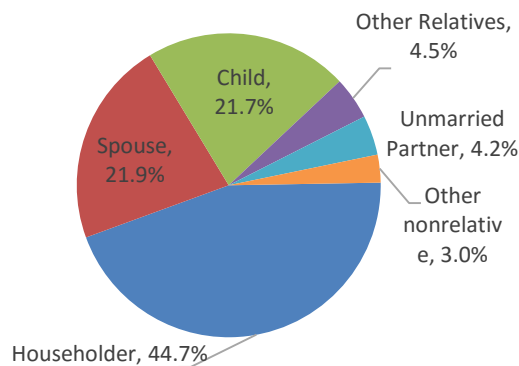
# Florence, Colorado Community Profile

(2014 Data)

## Households

|                        | Florence | Fremont County |
|------------------------|----------|----------------|
| <b>Population</b>      | 3,875    | 46,879         |
| In households          | 3,790    | 35,885         |
| In group quarters      | 115      | 10,994         |
| Total households       | 1,551    | 16,600         |
| Family households      | 985      | 10,670         |
| Living alone           | 398      | 4,975          |
| 65 years and older     | 234      | 2,642          |
| Average household size | 2.44     | 2.16           |
| Average family size    | 2.98     | 2.89           |

## Household Composition (Florence)



## Housing Supply

|                     | Florence  | Fremont County |
|---------------------|-----------|----------------|
| Total housing units | 1,815     | 19,199         |
| Occupied            | 1,551     | 16,600         |
| Owner               | 1,059     | 11,944         |
| Renter              | 492       | 4,656          |
| Vacant              | 264       | 2,599          |
| Homeowner rate      | 1.6%      | 2.5%           |
| Renter rate         | 8.7%      | 4.8%           |
| Median value        | \$107,800 | \$157,400      |

## Labor Force

|                      | Florence | Fremont County |
|----------------------|----------|----------------|
| Civilian labor force | 1,577    | 15,437         |
| Employed             | 1,348    | 14,114         |
| Unemployed           | 229      | 1,433          |
| Unemployment rate    | 14%      | 9%             |
| Armed Forces         | 0        | 90             |

## Employment

|   | Florence | Fremont County |
|---|----------|----------------|
| Employed Labor force  | 1,348    | 14,114         |
| Agriculture, Mining   | 1.0%     | 3.8%           |
| Construction  | 12.0%    | 7.1%           |
| Manufacturing   | 4.1%     | 4.1%           |
| Wholesale   | 1.6%     | 1.1%           |
| Retail  | 12.4%    | 13.5%          |
| Transport, Utilities  | 2.4%     | 4.4%           |
| Information   | 1.8%     | 1.0%           |
| Finance, real estate  | 2.7%     | 4.7%           |
| Professional  | 7.7%     | 7.2%           |
| Education, health   | 22.6%    | 23.8%          |
| Tourism (food service, accommodations, recreation, and entertainment) | 7.7%     | 9.1%           |
| Other services  | 7.1%     | 5.1%           |
| Public administration   | 16.9%    | 15.1%          |

## Occupation

|  | Florence | Fremont County |
|--|----------|----------------|
| Management, business                   | 27.1%    | 28.3%          |
| Service                                | 38.9%    | 30.0%          |
| Sales and Office                       | 20.2%    | 22.2%          |
| Natural Resources, Const., Maintenance | 11.3%    | 12.0%          |
| Production and Transportation          | 2.5%     | 7.5%           |

**Data Disclaimer:** The data in this profile are compiled from multiple sources and are intended for informational purposes only. Community Matters Inc. (CMI) assumes no responsibility or legal liability for the accuracy, completeness or usefulness of any information in this profile.

**Data Sources:** Data are 2014 data from the American Community Survey (ACS) 5 year estimate (2010-2014) except projected population which is by Colorado Department of Local Affairs (DOLA) in 2015.

