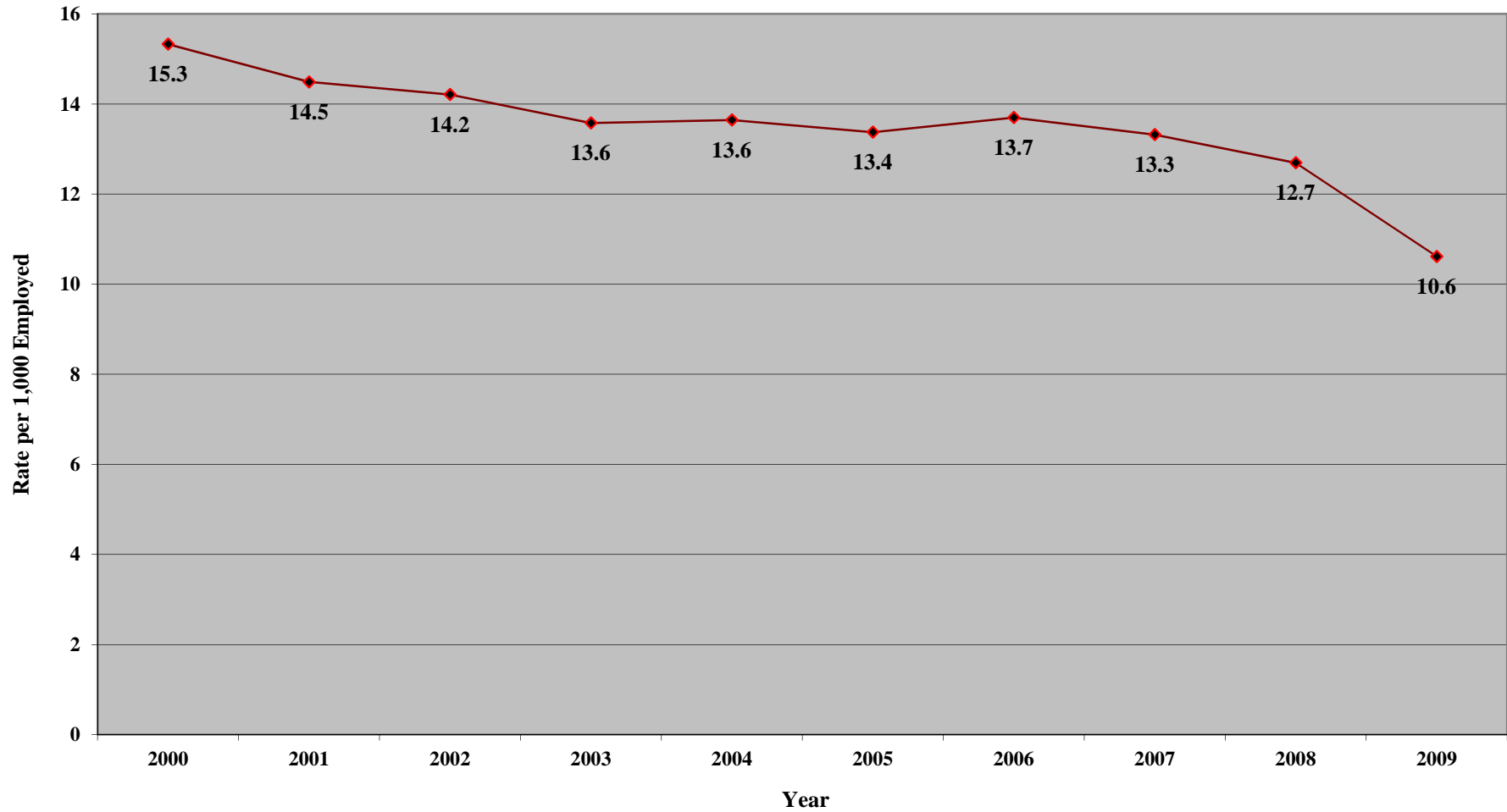


Figure 2. Rate of Lost-Time Claims Filed, per 1,000 Employed: 2000-2009



Source: Table 1; and Colorado Department of Labor and Employment, Division of Workers' Compensation, *Work-Related Injuries in Colorado 2000-2008*, Table 1; and, Labor Market Information, QCEW, *Colorado Employment and Wages: Annual Averages 2000-2009*.