



**COLORADO**  
Department of Revenue  
Enforcement Division - Marijuana

# MED 2015

## Third Quarter Update

---

**Barbara Brohl**

Executive Director  
Colorado Department of Revenue

**Ron Kammerzell**

Senior Director of Enforcement  
Colorado Department of Revenue

**W. Lewis Koski**

Director, Marijuana Enforcement Division  
Colorado Department of Revenue



January 28, 2015

## Colorado Marijuana Enforcement Division: Third Quarter 2015

---

Further analysis and discussion will be provided in the 2015 Annual Update, which will be published in early calendar year 2016. If final totals are not provided in a table, the September 30th numbers represent the final data point for the close of the quarter. Data provided is through September 30, 2015; 2014 data was harvested from the 2014 Annual Update.

<b>Local Jurisdiction Marijuana Business Licensing Status (Update of Table 1 of 2014 Annual Update)</b>	
Medical and Retail Marijuana Banned	218
Medical Marijuana Licensees Only	22
Retail Marijuana Licensees Only	9
Medical and Retail Marijuana Licensees	73
<b>Total</b>	<b>322</b>

Local authorities have the authority to ban medical or retail commercial marijuana businesses from operating within their jurisdiction.

<b>Business Licenses Year to Date (Update of Table 2 of 2014 Annual Update)</b>									
	<b>Jan.</b>	<b>Feb.</b>	<b>March</b>	<b>April</b>	<b>May</b>	<b>June</b>	<b>July</b>	<b>Aug.</b>	<b>Sept.</b>
<b><u>Medical Marijuana Businesses</u></b>									
Centers	505	504	503	503	511	512	510	515	515
Cultivation Operations	747	756	748	744	762	763	759	762	763
Infused Product Manufacturers	168	171	175	173	181	183	186	192	194
<b>Total</b>	<b>1,420</b>	<b>1,431</b>	<b>1,426</b>	<b>1,420</b>	<b>1,454</b>	<b>1,458</b>	<b>1,455</b>	<b>1,469</b>	<b>1,472</b>
<b><u>Retail Marijuana Establishments</u></b>									
Stores	334	341	356	364	361	372	380	385	394
Cultivation Facilities	415	431	444	452	463	471	480	496	511
Product Manufacturing Facilities	103	107	118	123	126	132	134	141	147
Testing Facilities	17	18	19	19	19	19	16	16	17
<b>Total</b>	<b>869</b>	<b>897</b>	<b>937</b>	<b>958</b>	<b>969</b>	<b>994</b>	<b>1,010</b>	<b>1,038</b>	<b>1,069</b>
<b>Total Medical and Retail Licenses</b>	<b>2,289</b>	<b>2,328</b>	<b>2,363</b>	<b>2,378</b>	<b>2,423</b>	<b>2,452</b>	<b>2,465</b>	<b>2,507</b>	<b>2,541</b>

Colorado Marijuana Enforcement Division: Third Quarter 2015

**Occupational Licensing Year to Date  
(Update of Table 3 of 2014 Annual Update)**

<b>Medical Marijuana</b>	<b>Jan.</b>	<b>Feb.</b>	<b>March</b>	<b>April</b>	<b>May</b>	<b>June</b>	<b>July</b>	<b>Aug.</b>	<b>Sept.</b>	<b>Total</b>
Key License Issued	245	256	303	292	243	277	291	312	312	<b>2,531</b>
Support Licenses Issued	882	835	956	887	840	881	910	917	948	<b>8,056</b>
<b>Total Occupational Licenses Issued*</b>	<b>1,127</b>	<b>1,091</b>	<b>1,259</b>	<b>1,179</b>	<b>1,089</b>	<b>1,158</b>	<b>1,201</b>	<b>1,229</b>	<b>1,260</b>	<b>10,593</b>
Key Licenses Renewed	19	18	33	39	54	73	85	76	59	<b>456</b>
Support Licenses Renewed	21	33	45	40	57	61	74	54	46	<b>431</b>
Percent of Occupational Licenses Renewed	37%	44%	47%	48%	58%	47%	42%	42%	39%	
Key Licenses Expired	12	16	16	19	18	40	60	71	40	<b>292</b>
Support Licenses Expired	57	48	70	67	62	108	162	142	127	<b>843</b>
<b>Total Expired</b>	<b>69</b>	<b>64</b>	<b>86</b>	<b>86</b>	<b>80</b>	<b>148</b>	<b>222</b>	<b>213</b>	<b>167</b>	<b>1,135</b>
<b>Total Number of Valid Occupational Licenses **</b>	<b>16,900</b>	<b>17,927</b>	<b>19,100</b>	<b>20,193</b>	<b>21,212</b>	<b>22,212</b>	<b>23,191</b>	<b>24,207</b>	<b>25,300</b>	
<b>Retail Marijuana***</b>	<b>Jan.</b>	<b>Feb.</b>	<b>March</b>	<b>April</b>	<b>May</b>	<b>June</b>	<b>July</b>	<b>Aug.</b>	<b>Sept.</b>	
Occupational Licensees	7	7	10	11	12	12	12	12	11	

\* Medical Marijuana Occupational Licensee Issued data are month-end totals that illustrate how many of each category was processed during any given month.

\*\* Total Number of Valid Medical Marijuana Occupational data is a cumulative total of valid licenses at the end of each month; this number is calculated by subtracting the number of licenses expired each month from the number of licenses issued that month and combining this new total with the total number of valid licenses from the previous month

\*\*\* Retail Occupational License data is a cumulative total of valid licenses at the end of each month.

**Volume of Marijuana within the Regulated Commercial System**

**Average of Medical Marijuana Plants Cultivated (Update of Table 4 of 2014 Annual Update)**

	Jan.	Feb.	March	April	May	June	July	Aug.	Sept.
Average Authorized Plants	621,120	621,339	619,194	617,645	611,474	615,347	625,270	629,441	629,358
Average Cultivated (Vegetative & Flower*) Plants	304,149	313,218	318,680	316,247	310,070	302,089	300,050	301,012	309,120
Percentage of Authorized Growth Capacity	48.9%	50.4%	51.5%	51%	51%	49%	48%	48%	49%
Average Vegetative* Plants	170,431	180,426	183,364	175,119	171,669	171,442	172,115	170,481	170,212
Average Flower* Plants	133,718	132,792	135,315	141,128	138,401	130,647	127,935	130,531	138,908

**Average of Retail Marijuana Plants Cultivated (Update to Table 5 of 2014 Annual Update)**

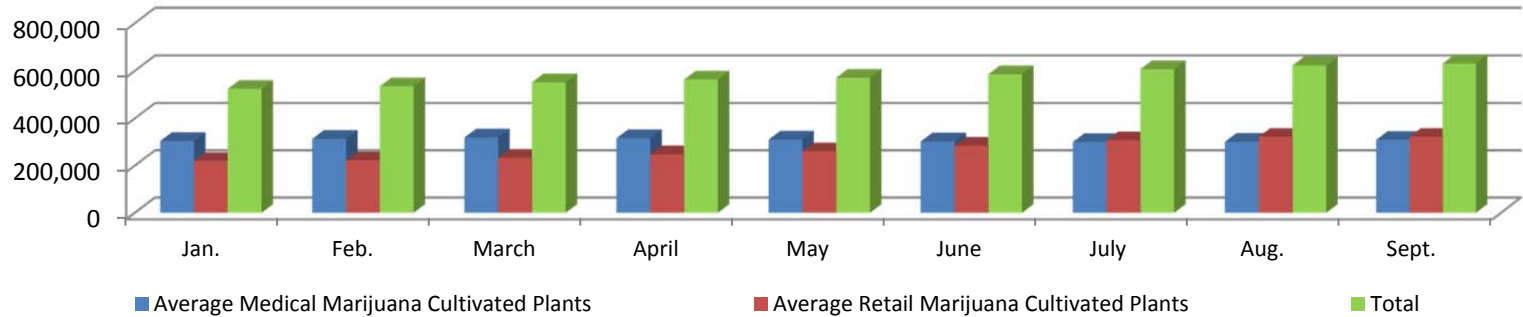
	Jan.	Feb.	March	April	May	June	July	Aug.	Sept.
Average Cultivated Plants (Vegetative & Flower*)	219,688	221,829	232,869	247,066	260,656	283,551	306,900	321,781	321,525
Average Vegetative* Plants	125,306	123,787	131,229	139,354	148,188	165,418	176,575	178,899	176,926
Average Flower* Plants	94,381	98,042	101,640	107,712	112,468	118,133	130,325	142,881	144,598

\*Vegetative and Flower are phases in the marijuana plant's growth cycle.

Colorado Marijuana Enforcement Division: Third Quarter 2015

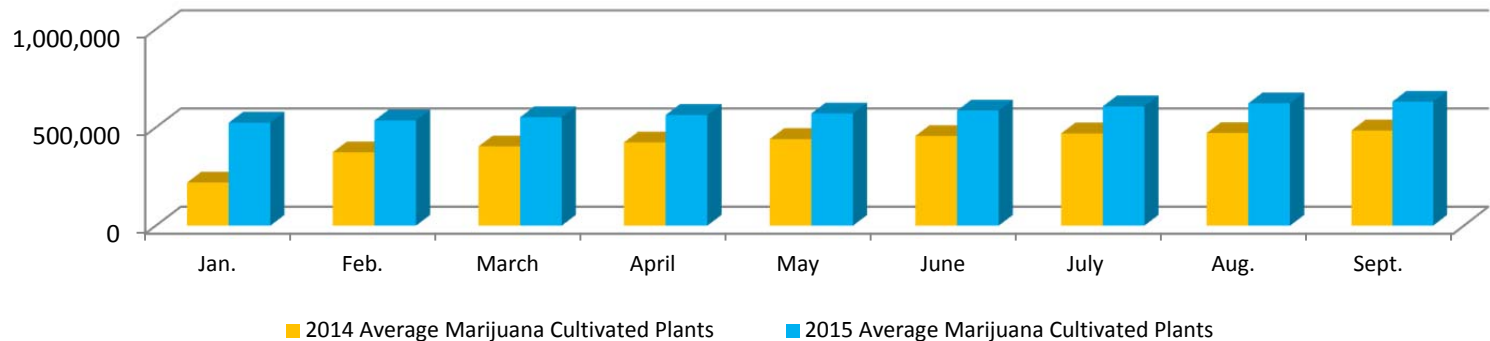
Monthly Average of Marijuana Plants Cultivated (Update to Table 6 of 2014 Annual Report)

	Jan.	Feb.	March	April	May	June	July	Aug.	Sept.
Average Medical Marijuana Cultivated Plants	304,149	313,218	318,680	316,248	310,070	302,090	300,050	301,012	309,120
Average Retail Marijuana Cultivated Plants	219,688	221,830	232,869	247,066	260,656	283,552	306,900	321,781	321,525
<b>Total</b>	<b>523,837</b>	<b>535,048</b>	<b>551,549</b>	<b>563,314</b>	<b>570,726</b>	<b>585,642</b>	<b>606,950</b>	<b>622,793</b>	<b>630,645</b>



2014/2015 Comparison Monthly Average of Marijuana Plants Cultivated

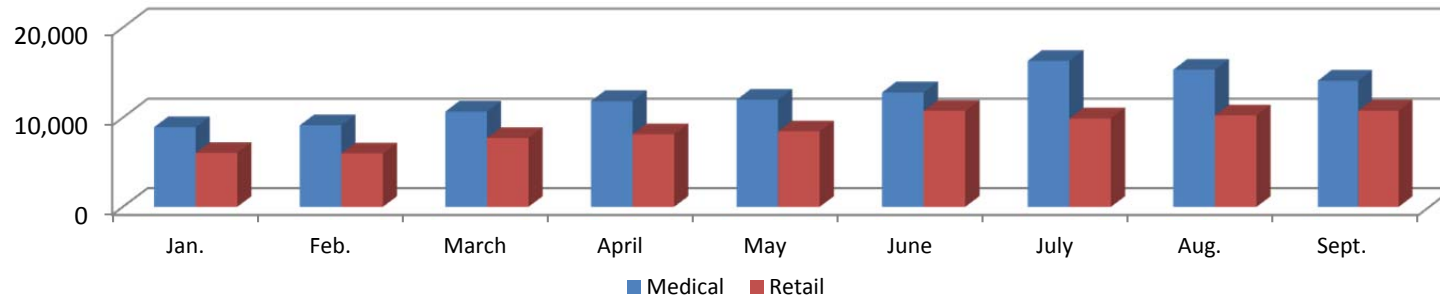
	Jan.	Feb.	March	April	May	June	July	Aug.	Sept.
2014 Average Marijuana Cultivated Plants	219,243	373,612	402,915	423,991	440,432	456,486	469,460	471,373	484,438
2015 Average Marijuana Cultivated Plants	523,837	535,048	551,549	563,314	570,726	585,642	606,950	622,793	630,645



**Volume of Marijuana Sold within the Commercial Regulated System**

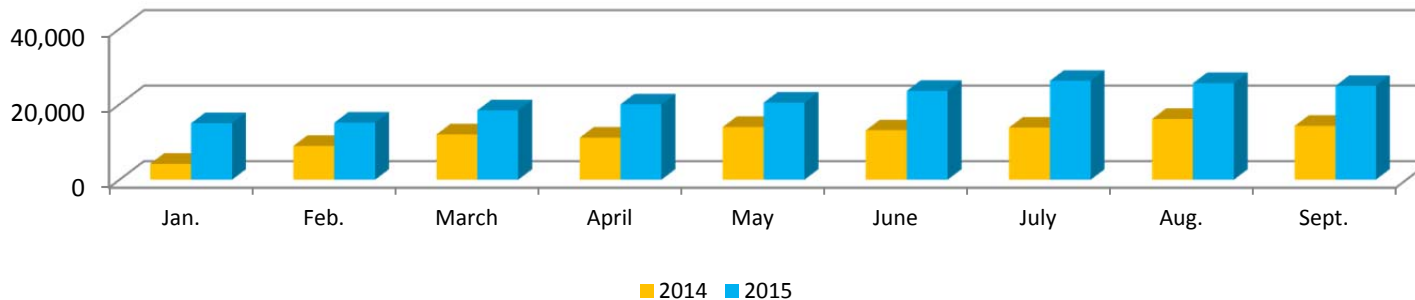
**Total Pounds of Flower Sold (Update of Table 7 of 2014 Annual Update)**

	Jan.	Feb.	March	April	May	June	July	Aug.	Sept.
<b>Medical</b>	8,930	9,130	10,673	11,827	11,981	12,797	16,295	15,324	14,089
<b>Retail</b>	6,049	5,968	7,712	8,135	8,448	10,743	9,898	10,247	10,764



**2014/2015 Third Quarter Comparison Total Pounds of Flower Sold in Both Industries**

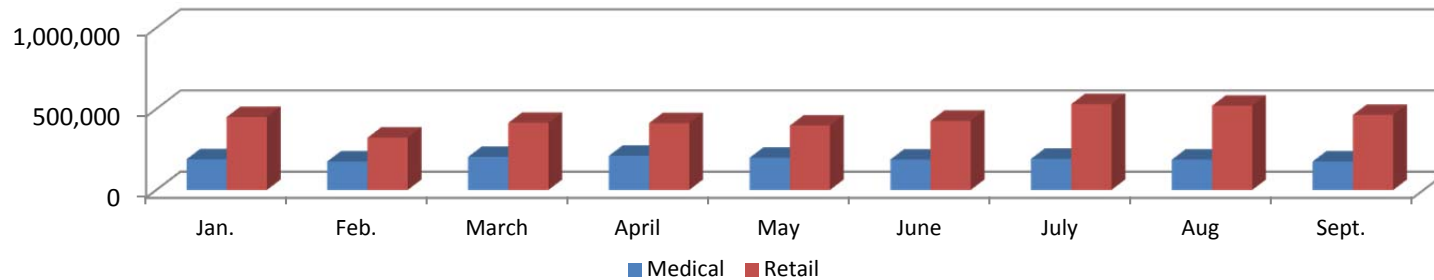
	Jan.	Feb.	March	April	May	June	July	Aug.	Sept.
<b>2014</b>	4,220	8,948	12,006	11,135	13,965	13,095	13,805	16,104	14,260
<b>2015</b>	14,979	15,098	18,385	19,962	20,429	23,540	26,193	25,571	24,853



Colorado Marijuana Enforcement Division: Third Quarter 2015

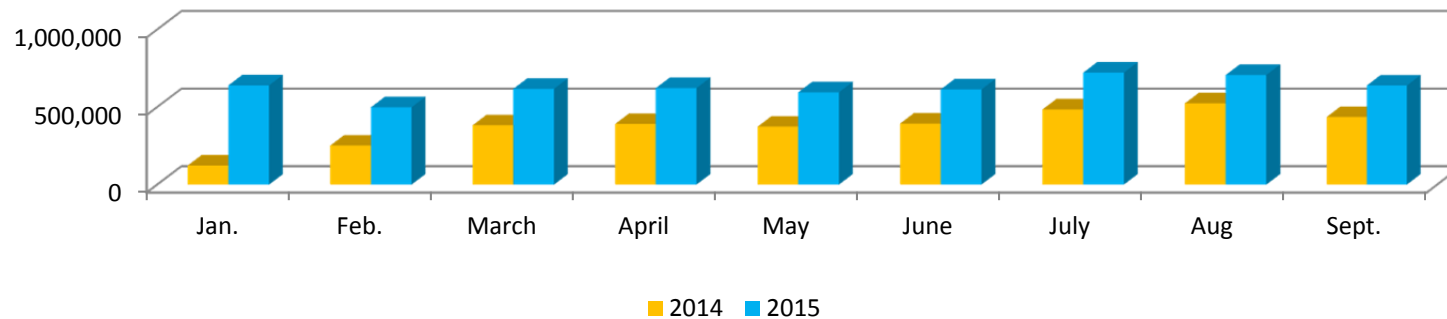
**Total Units of Infused Edibles Sold (Update of Table 8 of 2014 Annual Update)**

	Jan.	Feb.	March	April	May	June	July	Aug.	Sept.
<b>Medical</b>	189,317	175,900	203,608	210,071	198,481	187,488	192,087	186,931	175,668
<b>Retail</b>	450,392	322,270	413,657	411,837	396,503	425,746	529,512	519,465	462,833



**2014/2015 Third Quarter Comparison Total Units of Infused Edibles Sold in Both Industries**

	Jan.	Feb.	March	April	May	June	July	Aug.	Sept.
<b>2014</b>	123,166	251,269	382,411	390,797	373,357	393,027	484,494	523,782	435,712
<b>2015</b>	639,709	498,170	617,265	621,908	594,984	613,234	721,599	706,396	638,501

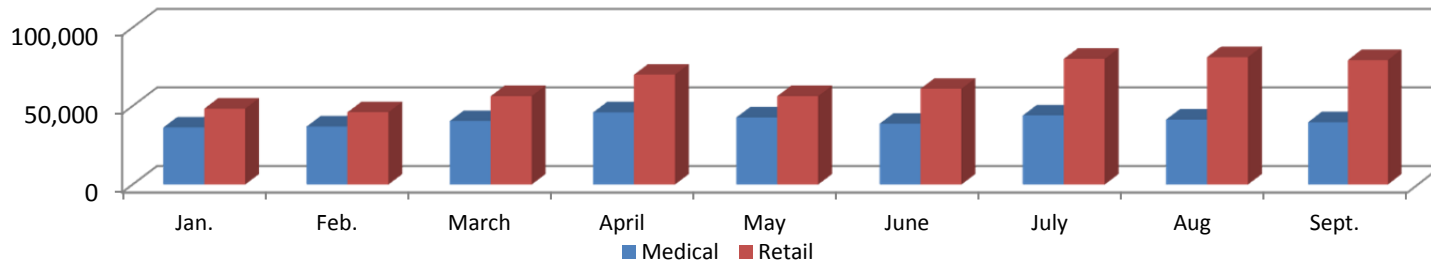




Colorado Marijuana Enforcement Division: Third Quarter 2015

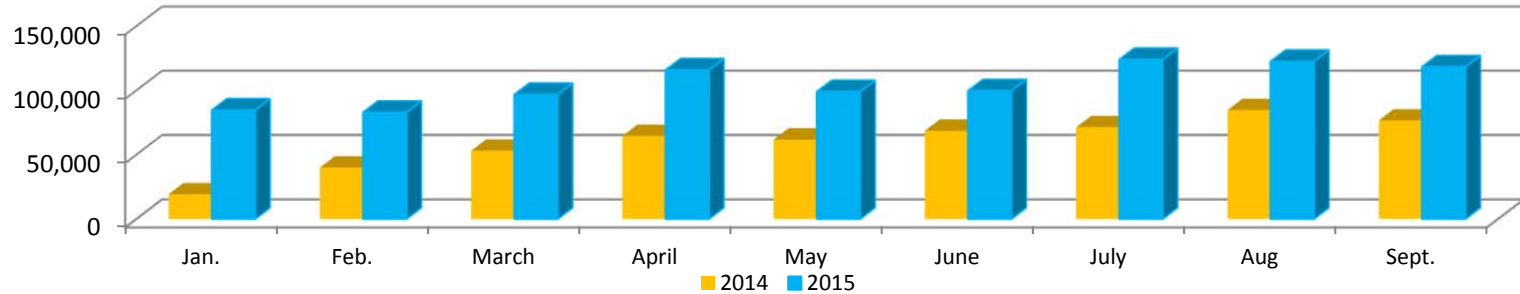
**Total Units of Infused Non-Edibles Sold (Update of Table 9 of 2014 Annual Update)**

	Jan.	Feb.	March	April	May	June	July	Aug.	Sept.
<b>Medical</b>	36,317	36,873	40,433	45,914	42,731	38,703	43,990	41,372	39,653
<b>Retail</b>	48,310	46,030	56,303	69,961	56,295	60,970	80,035	81,129	79,259



**2014/2015 Third Quarter Comparison Total Units of Infused Non-Edibles Sold in Both Industries**

	Jan.	Feb.	March	April	May	June	July	Aug.	Sept.
<b>2014</b>	19,376	40,026	53,114	64,637	61,781	68,656	71,376	84,683	76,703
<b>2015</b>	84,627	82,903	96,736	115,875	99,026	99,673	124,025	122,501	118,259



**Mandatory Retail Marijuana Testing for Edibles**

<b>Potency Testing for Edibles (Update of Table 10 of 2014 Annual Update)</b>									
	<b>Jan.</b>	<b>Feb.</b>	<b>March</b>	<b>April</b>	<b>May</b>	<b>June</b>	<b>July</b>	<b>Aug.</b>	<b>Sept.</b>
Total Edibles Tested	750	1,039	1,026	2,600	1,437	1,723	2,129	2,329	2,700
Total Passed	739	1,032	1,023	2,594	1,427	1,709	2,115	2,318	2,690
Total Failed	11	7	3	6	10	14	14	11	10
% Edibles that Passed	<b>98.5%</b>	<b>99.3%</b>	<b>99.8%</b>	<b>99.7%</b>	<b>99.3%</b>	<b>99.2%</b>	<b>99.3%</b>	<b>99.5%</b>	99.6%

<b>Homogeneity Testing for Edibles (Update of Table 11 of 2014 Annual Update)</b>									
	<b>Jan.</b>	<b>Feb.</b>	<b>March</b>	<b>April</b>	<b>May</b>	<b>June</b>	<b>July</b>	<b>Aug.</b>	<b>Sept.</b>
Total Edibles Tested	332	405	413	478	364	490	509	529	528
Total Passed	332	405	413	477	364	489	509	527	528
Total Failed	0	0	0	1	0	1	0	2	0
% Edibles that Passed	<b>100%</b>	<b>100%</b>	<b>100%</b>	<b>99.8%</b>	<b>100%</b>	<b>99.8%</b>	<b>100%</b>	<b>99.6%</b>	100%

<b>Residual Solvent Testing* for Concentrates</b>						
	<b>April</b>	<b>May</b>	<b>June</b>	<b>July</b>	<b>Aug.</b>	<b>Sept.</b>
Total Concentrates Tested	1,071	1,141	1,208	1,139	1,179	1,105
Total Passed	950	1,077	1,168	1,113	1,162	1,092
Total Failed	121	64	40	26	17	13
% Concentrates that Passed	88.7%	94.4%	96.7%	97.8%	98.6%	98.8%

\*Residual solvent testing began April 7, 2015.

Residual Solvent data collection has been refined to reflect a more comprehensive analysis. The Mid-Year Update has also been modified to reflect this progress.

**Third Quarter Licensing and Enforcement Activity  
(July 1 – September 30, 2015)**

	<b>Total</b>
<b>Changes to License</b>	<b>371</b>
Change of Location	75
Change of Ownership	114
Change of Trade Name	31
Modification of Premises	151
<b>New Licensing Investigations (New Businesses or Owners)</b>	<b>406</b>
Corporate Background Investigation	226
Individual Background Investigation	180
<b>Compliance Monitoring &amp; Regulatory/Criminal Enforcement</b>	<b>418</b>

**Cumulative Licensing and Enforcement Activity  
(January 1 – September 30, 2015)**

	<b>Total</b>
<b>Changes to License</b>	<b>962</b>
Change of Location	208
Change of Ownership	260
Change of Trade Name	79
Modification of Premises	415
<b>New Licensing Investigations (New Businesses or Owners)</b>	<b>1,261</b>
Corporate Background Investigation	685
Individual Background Investigation	576
<b>Compliance Monitoring &amp; Regulatory/Criminal Enforcement</b>	<b>856</b>

**Administrative Actions Taken by the State Licensing Authority**

	Third Quarter Activity (July 1 – September 30, 2015)							
	Medical Centers	Medical Cultivations	Medical MIPs*	Retail Stores	Retail Cultivations	Retail Product Manufacturers	Retail Testing Facilities	Owners or Occupational Licensees
Assurance of Voluntary Compliance	2	6	2	7	4	1	0	0
Denials	0	0	0	1	0	0	0	9
Summary Suspensions	0	0	0	0	0	0	0	5
Order to Show Cause	3	3	1	1	0	1	1	19
Stipulation, Agreement and Order	7	11	2	3	7	1	0	17

	Year to Date (January 1 – September 30, 2015)							
	Medical Centers	Medical Cultivations	Medical MIPs*	Retail Stores	Retail Cultivations	Retail Product Manufacturers	Retail Testing Facilities	Owners or Occupational Licensees
Assurance of Voluntary Compliance	9	20	2	10	7	1	0	3
Denials	1	1	0	4	2	0	0	18
Summary Suspensions	4	6	1	2	3	1	0	13
Order to Show Cause	17	26	6	3	4	4	1	53
Stipulation, Agreement and Order	21	29	7	9	17	3	0	39

\*Medical Marijuana Infused Product Manufacturers (MIPs)