

PAVING PROJECTS

2009-

Trinchera Ranch Rd



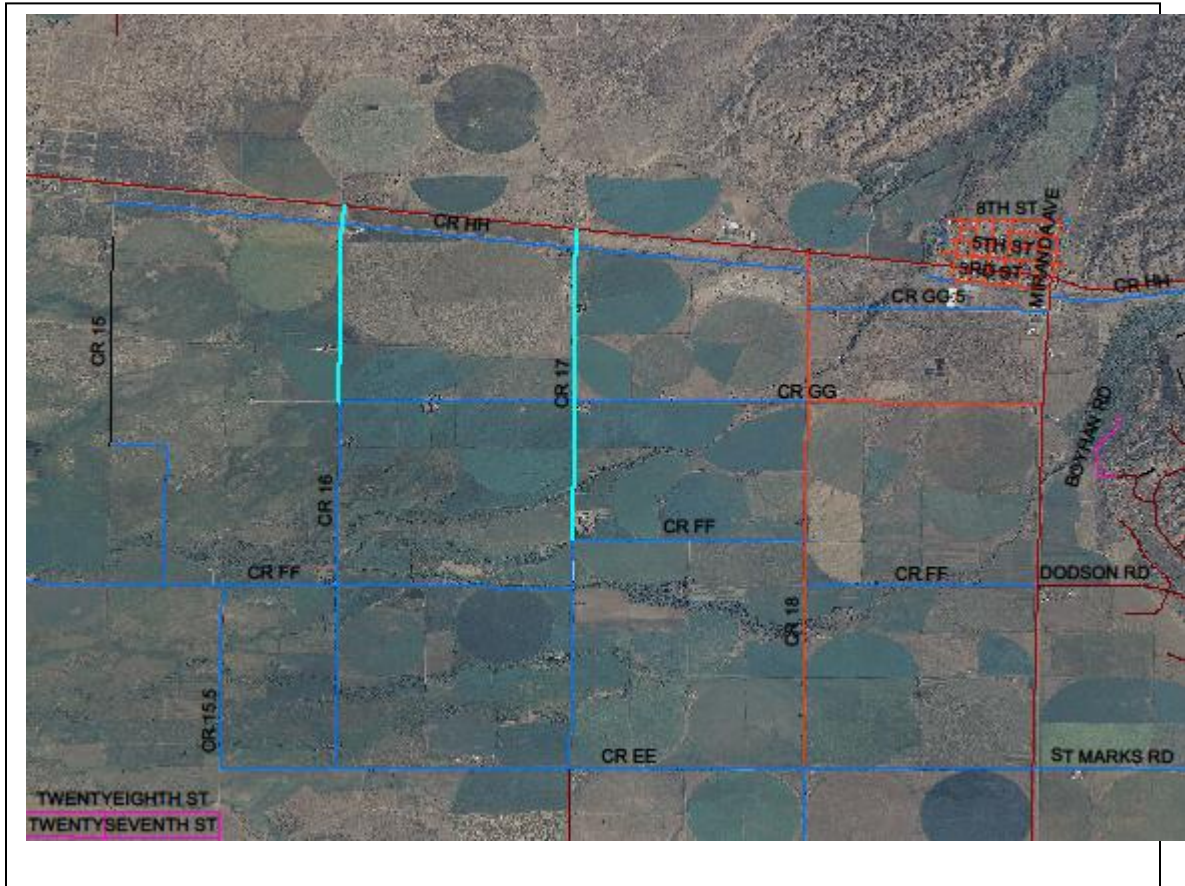
CRL.7



CR P (Hermann Rd)



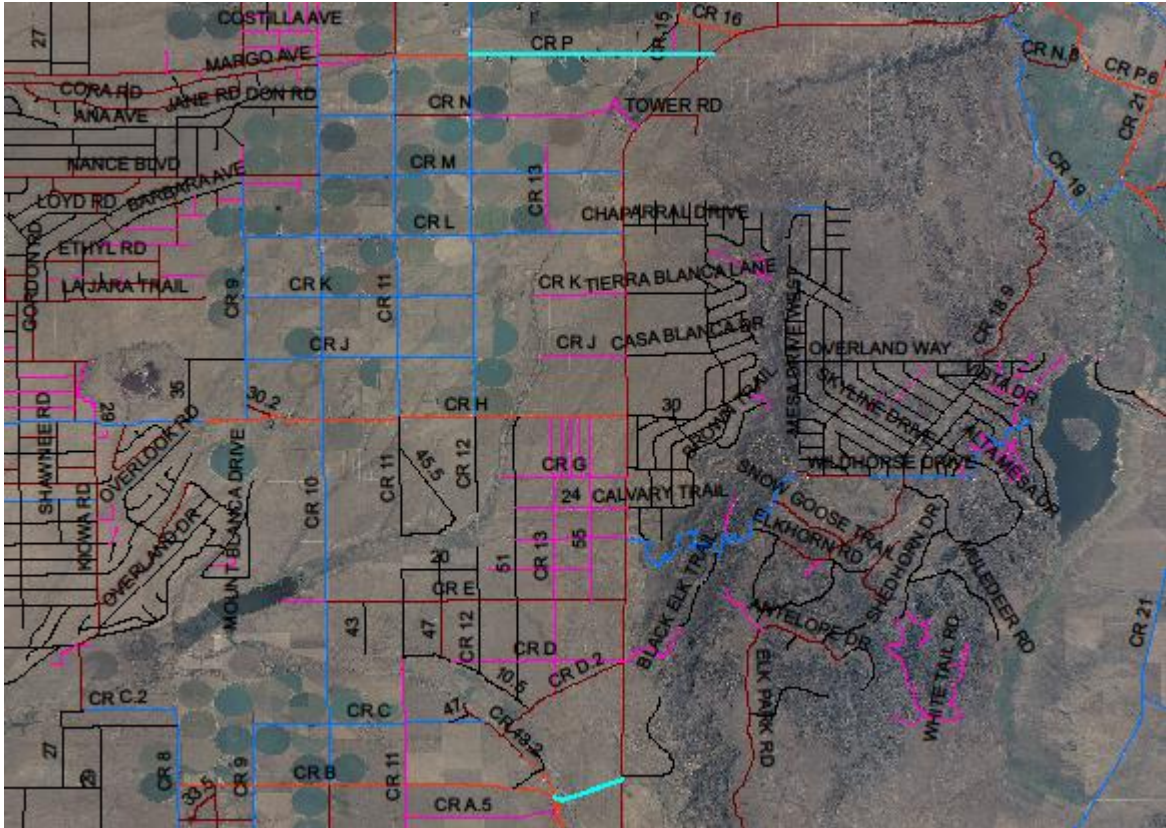
2010 PAVING



CR 16 PAVED AND CR 17 CHIP SEALED

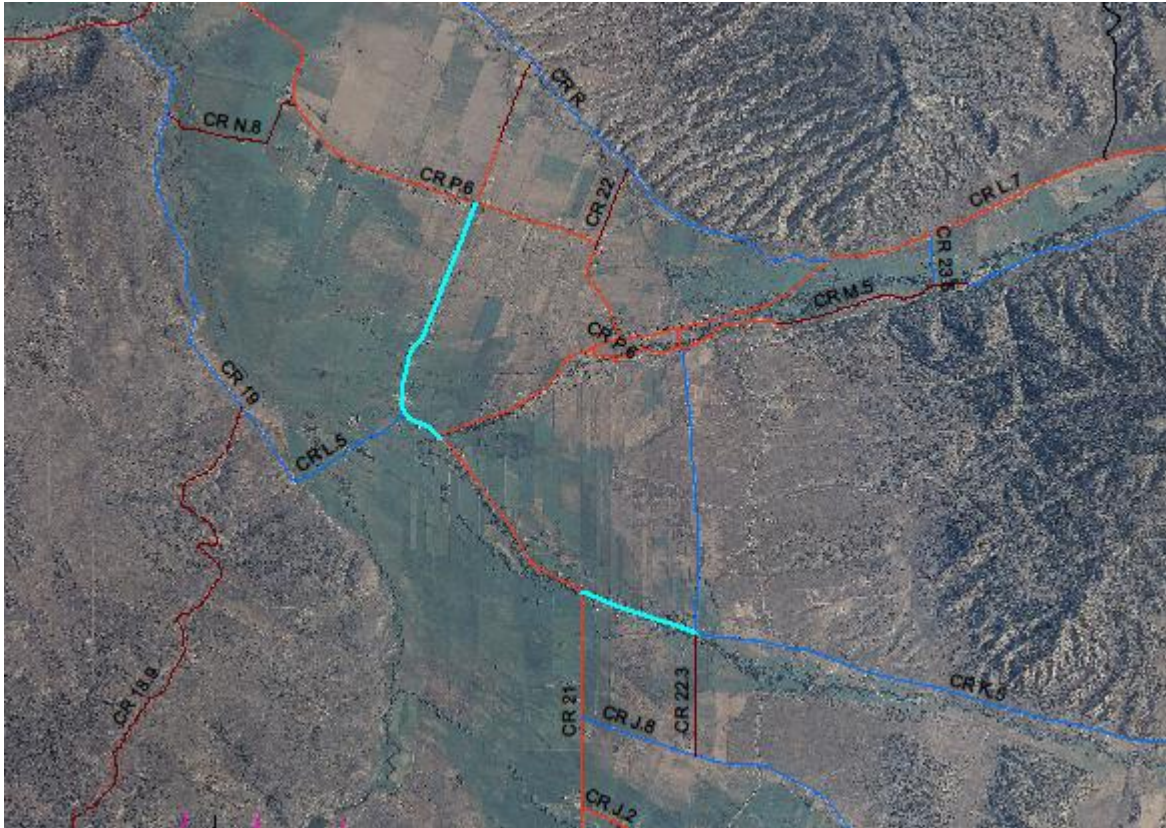


CR L.7 FINISHED PAVING AND CR 21 CHIP SEALED FROM 4 WAY STOP TO SAN PABLO CHURCH

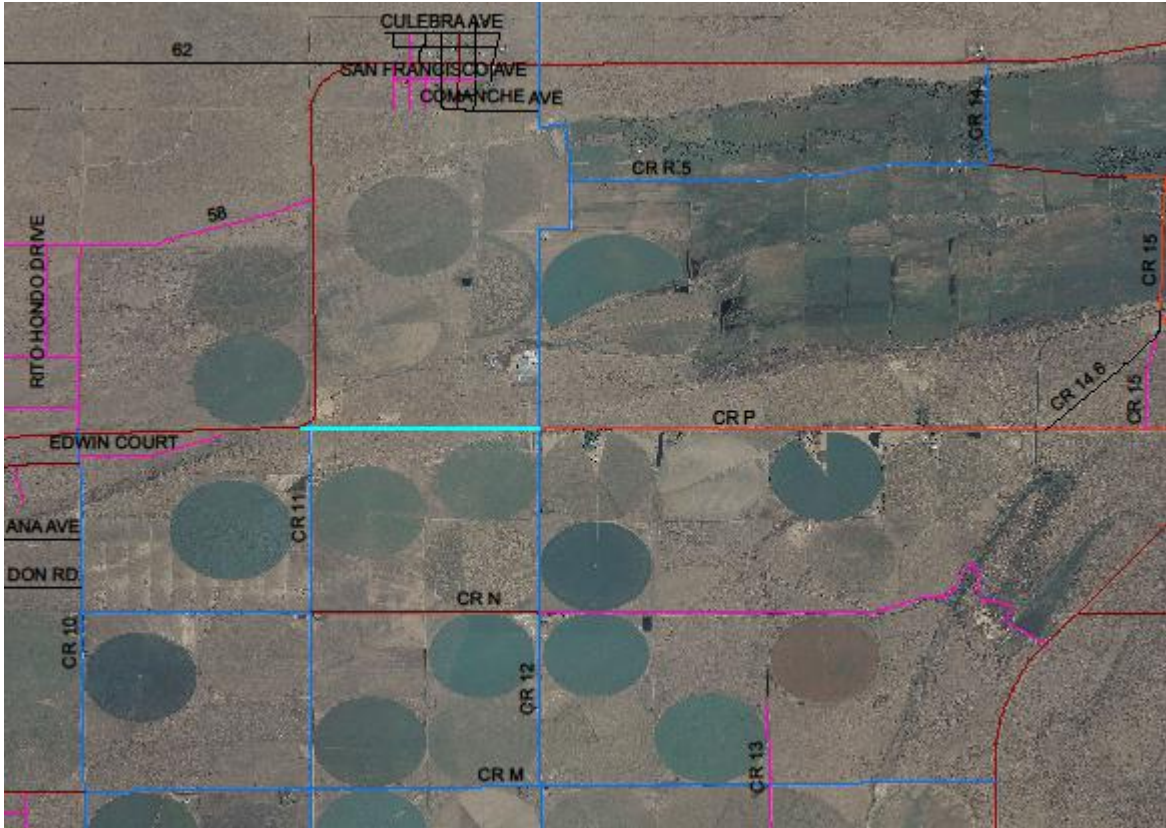


CR P (HERMANN RD) PAVED FROM BRIDGE TO CR 12 AND CR B FROM HWY 159 TO CR 13.2 CHIP AND SEALED

2011 PAVING



CR 21 FROM 4 WAY STOP SOUTH TO SAN PABLO CHURCH PAVED AND CR K.5 FROM CR 21 SOUTHEAST TO CR 22.3 PAVED IN 2011



CR P (HERMANN RD) FROM CR 12 WEST TO HWY 142 PAVED IN 2011

NOTE: FROM 2009 TO 2011 APPROXIMATELY 1.5 MILLION DOLLARS WERE SPENT ON PAVING COUNTY ROADS.