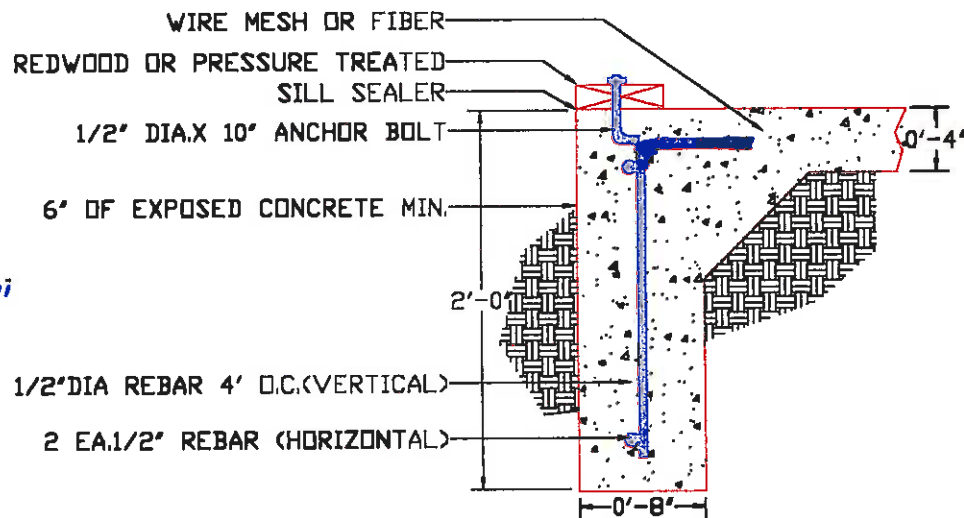


A STEM WALL
A-1 Scale: 1"=1'



B MONOLITHIC
A-1 Scale: 1"=1'

- NOTES:
1. Bend Rebar around the corners and overlap Rebar 12" min at the joints.
 2. Anchor bolts must be 1/2" x 10" min and placed no more than 12" from the corners and from splices in the sill plate.
 3. Keep the Rebar at least 3" from the bottom, sides and the top.
 4. Backfill with soil at least 10' out from the building and expose 6" of concrete from the bottom of the sill plate.