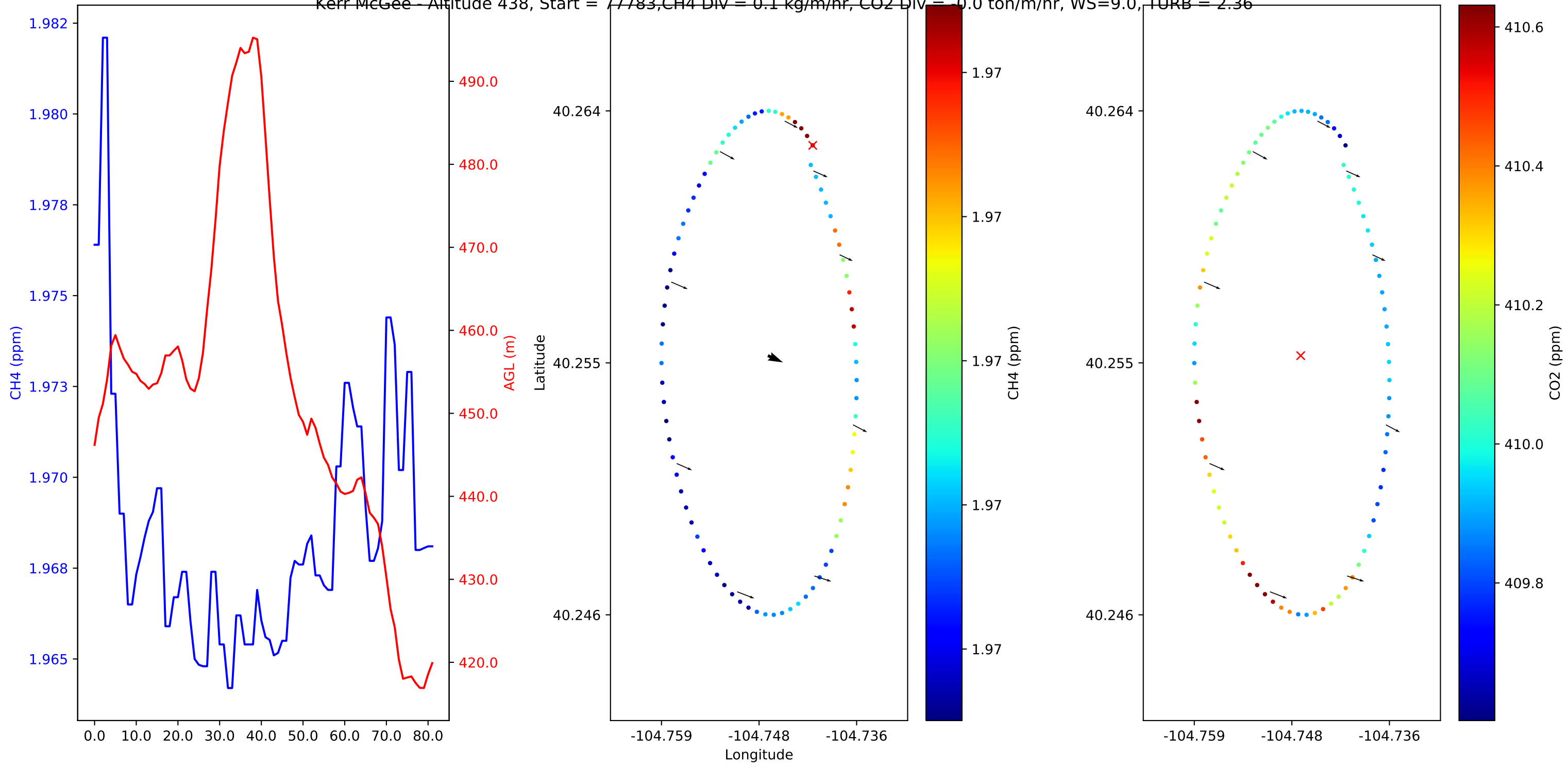
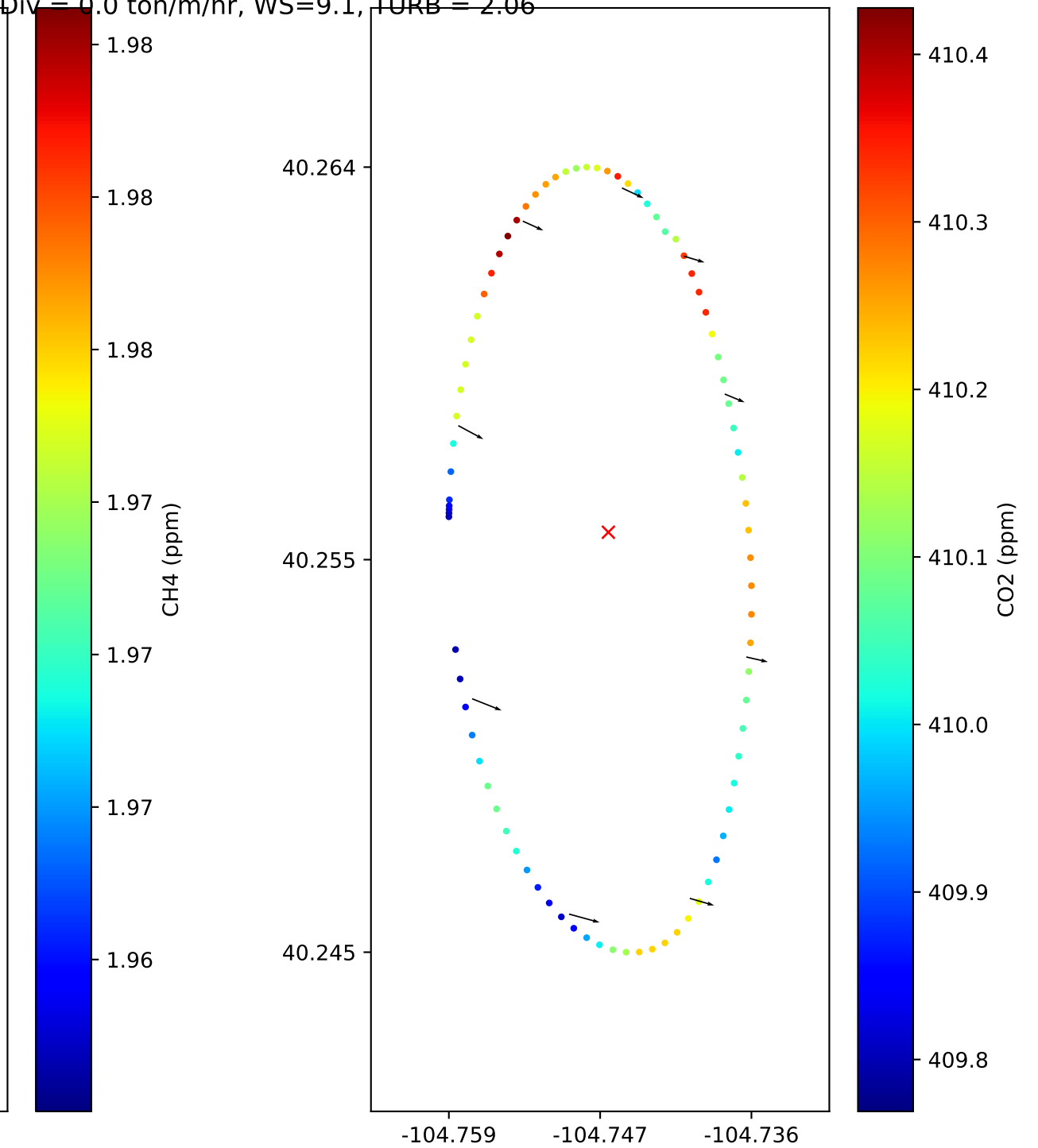
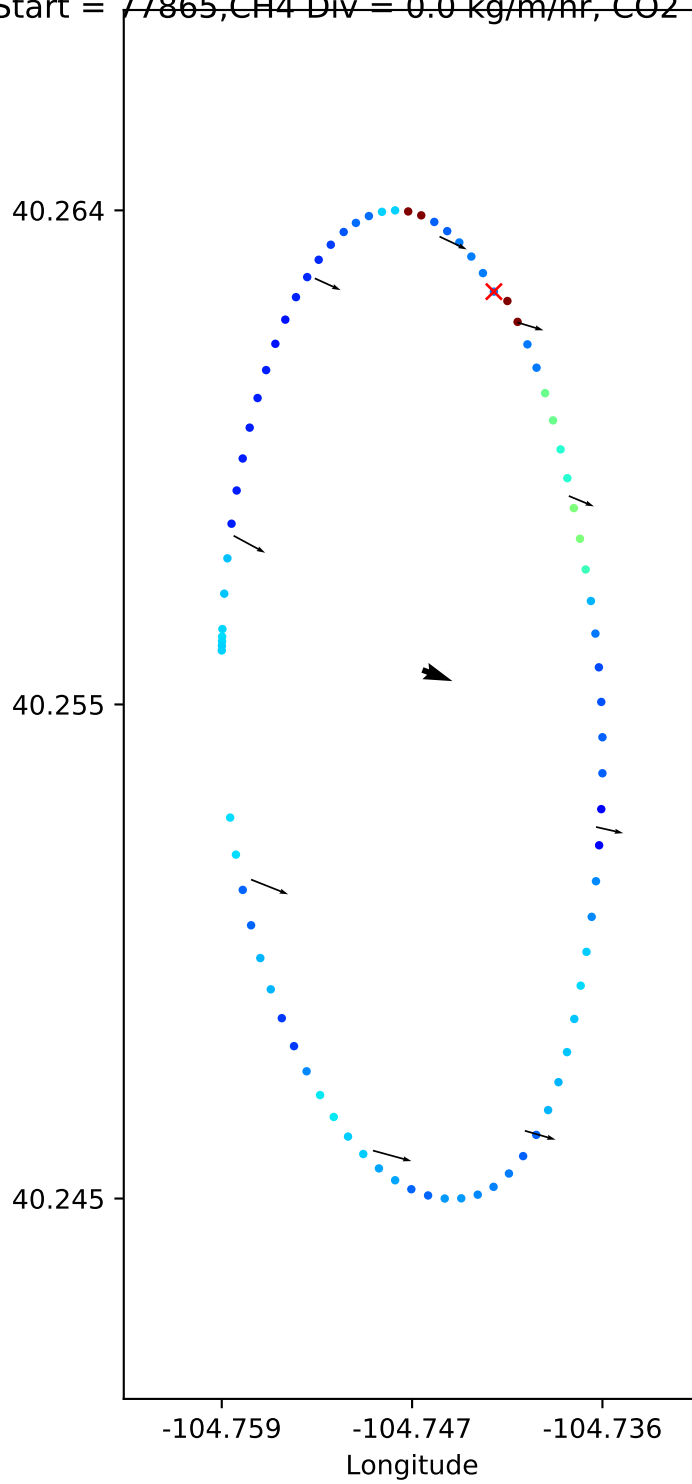
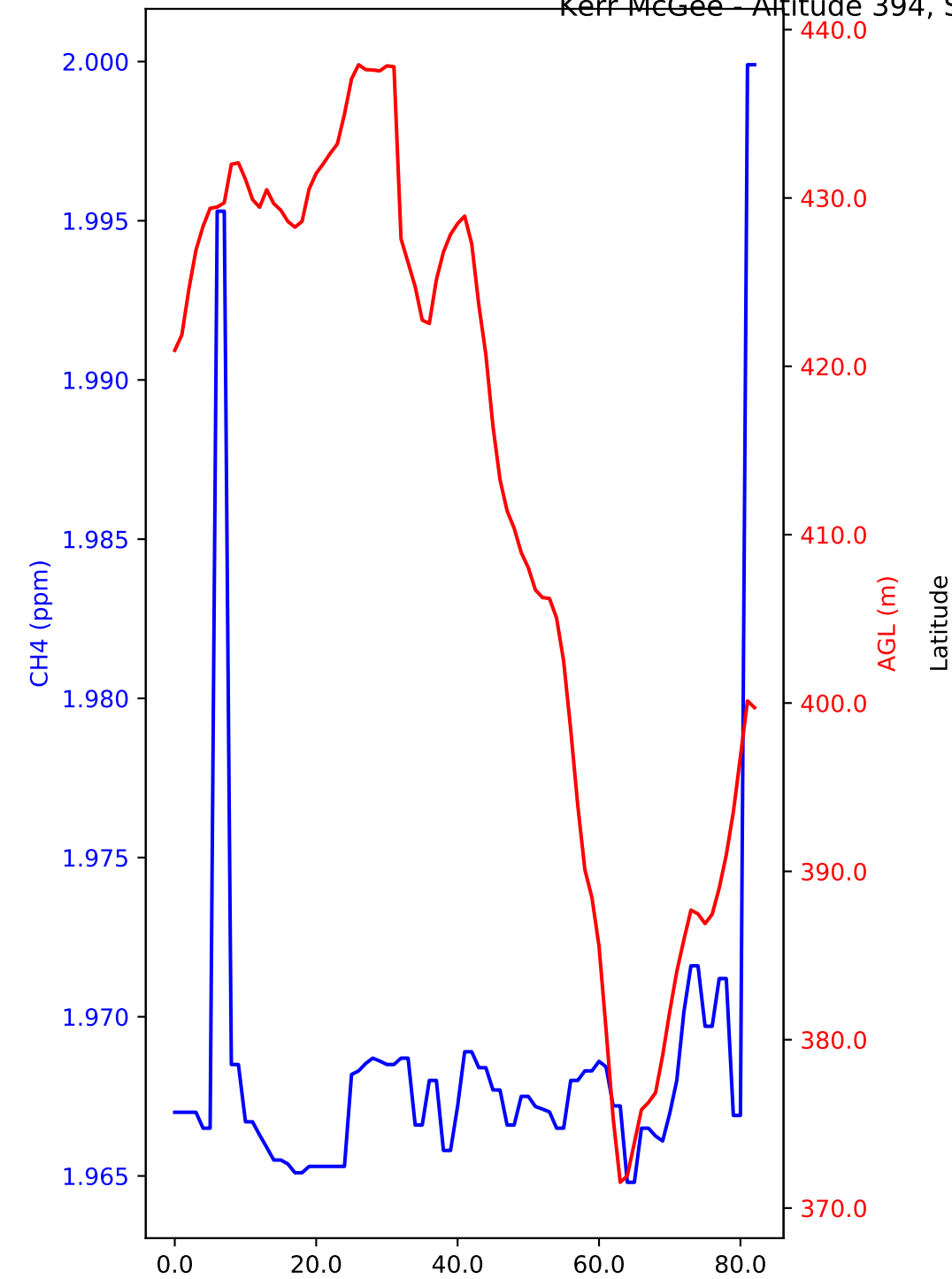


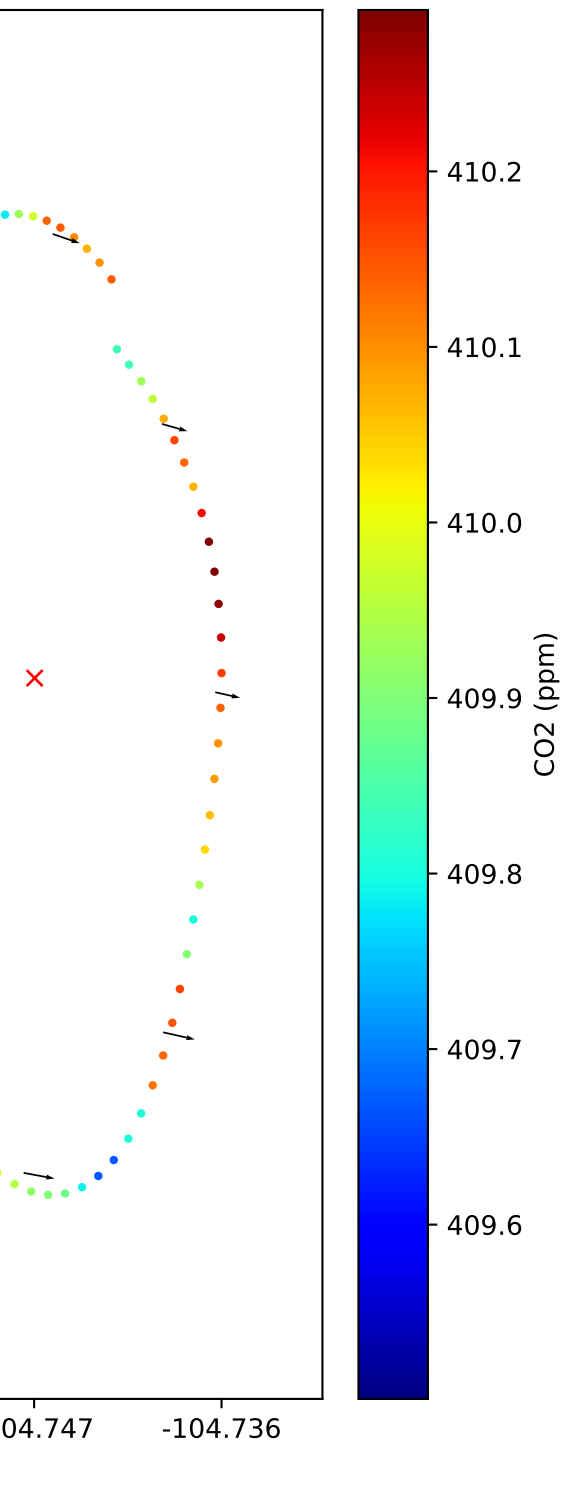
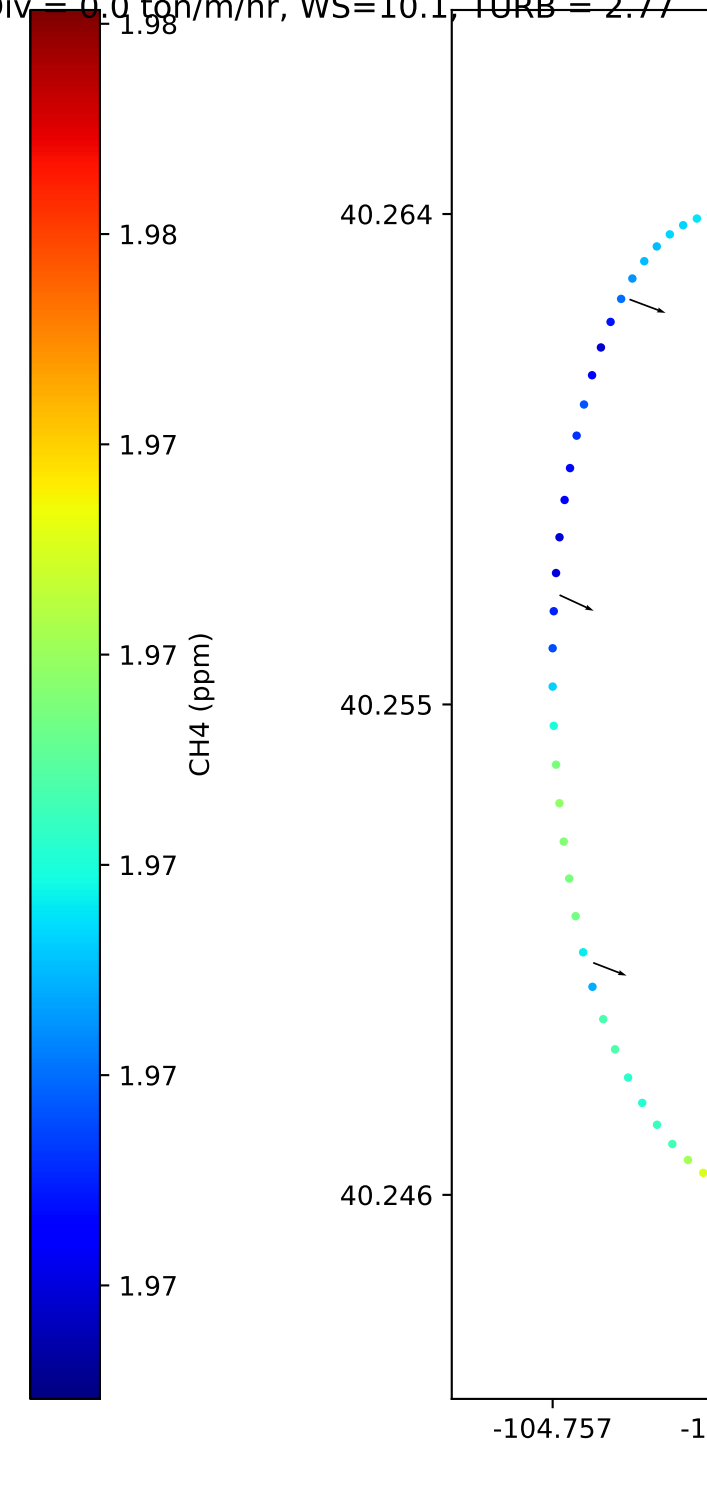
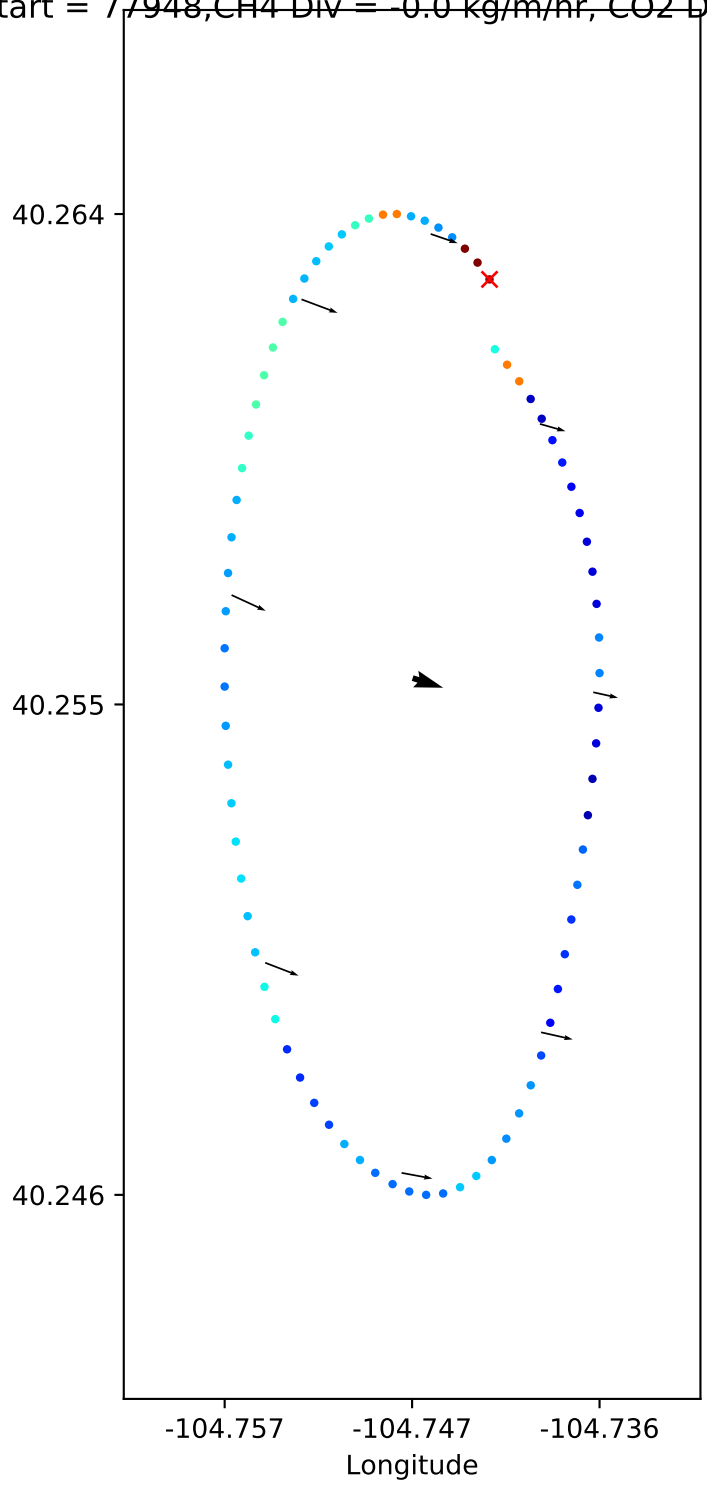
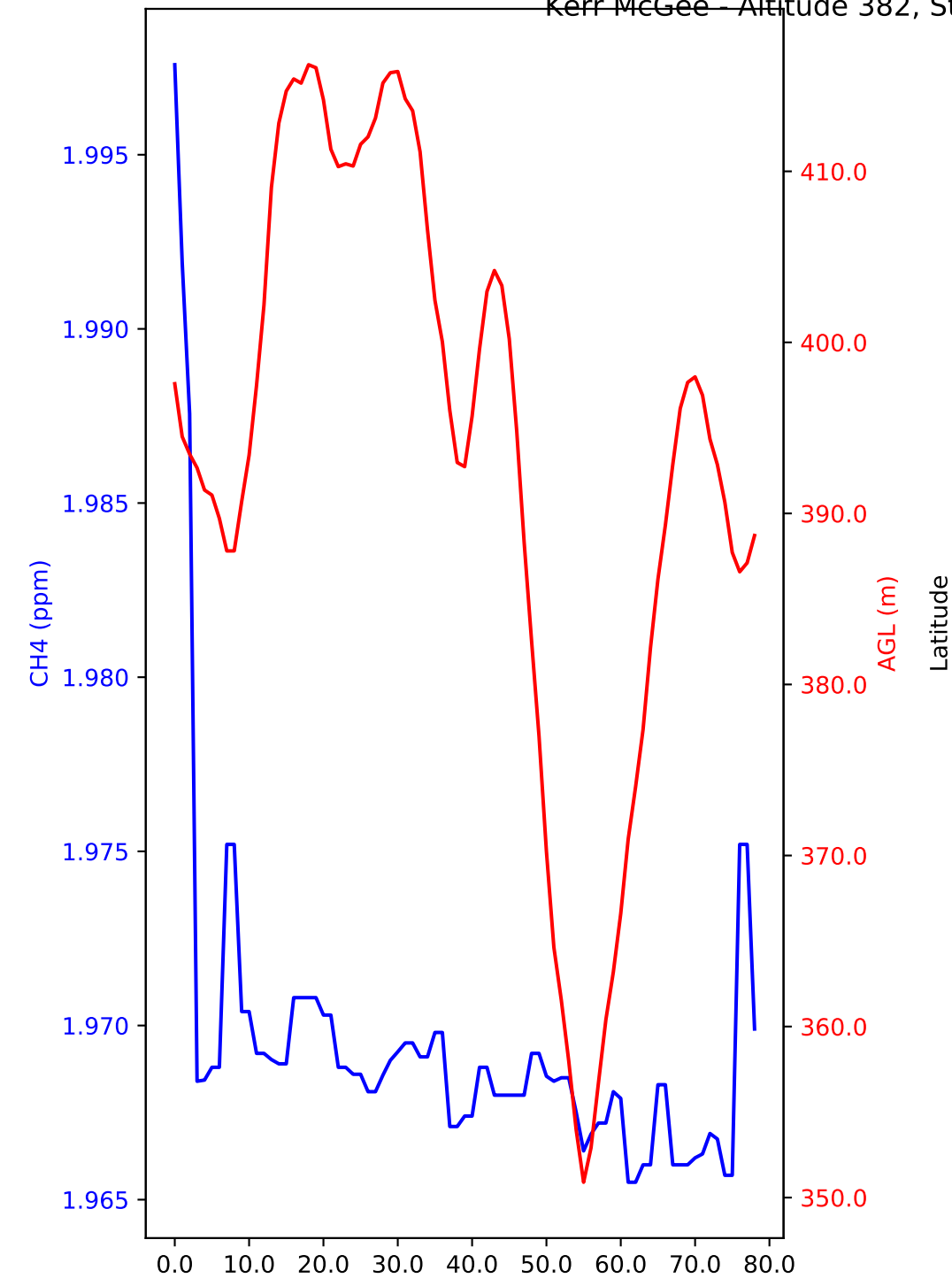
Kerr McGee - Altitude 438, Start = 77783, CH4 Div = 0.1 kg/m/hr, CO2 Div = 0.0 ton/m/hr, WS=9.0, TURB = 2.36



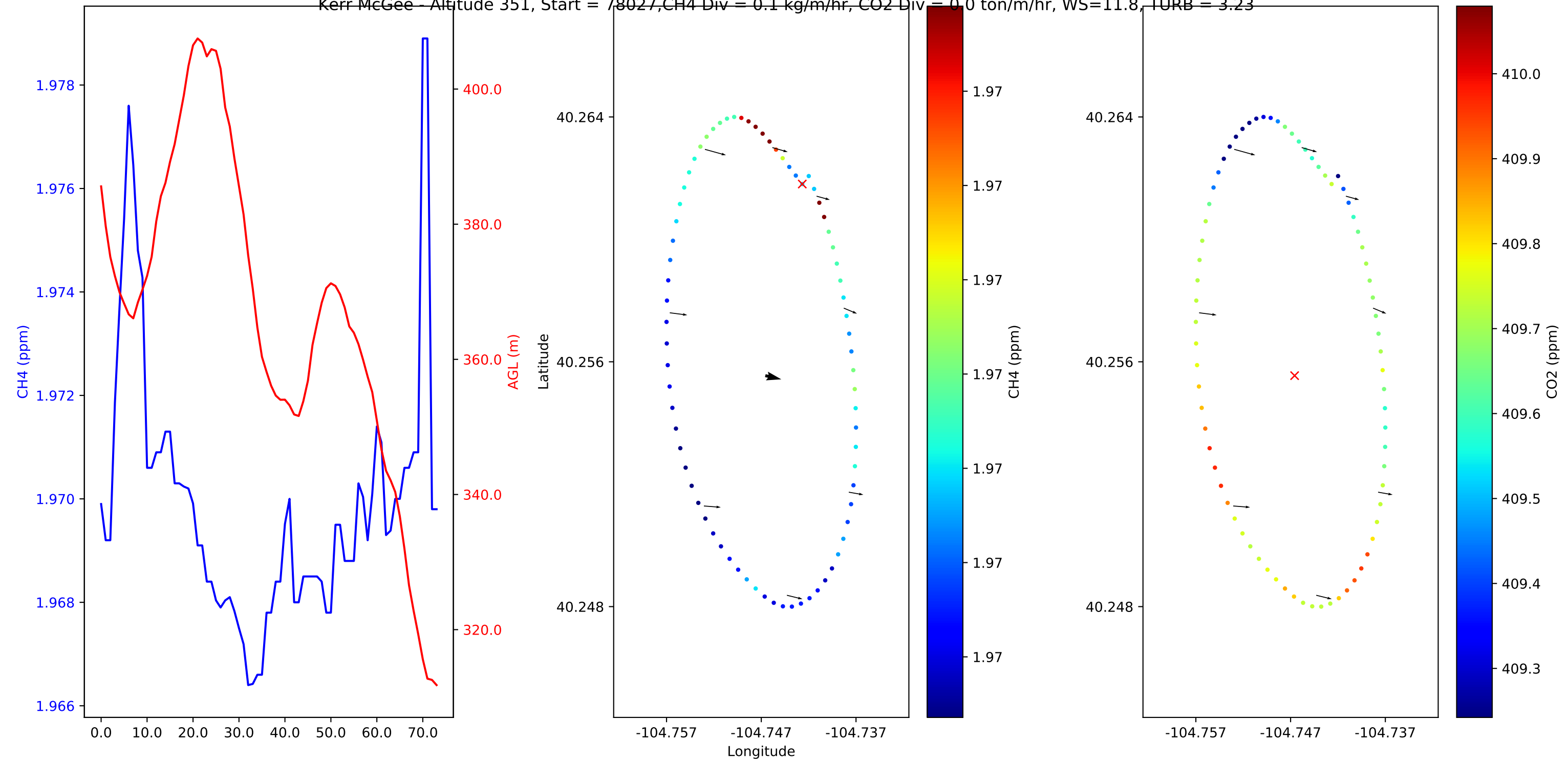
Kerr McGee - Altitude 394, Start = 77865, CH4 Div = 0.0 kg/m/hr, CO2 Div = 0.0 ton/m/hr, WS=9.1, TURB = 2.06



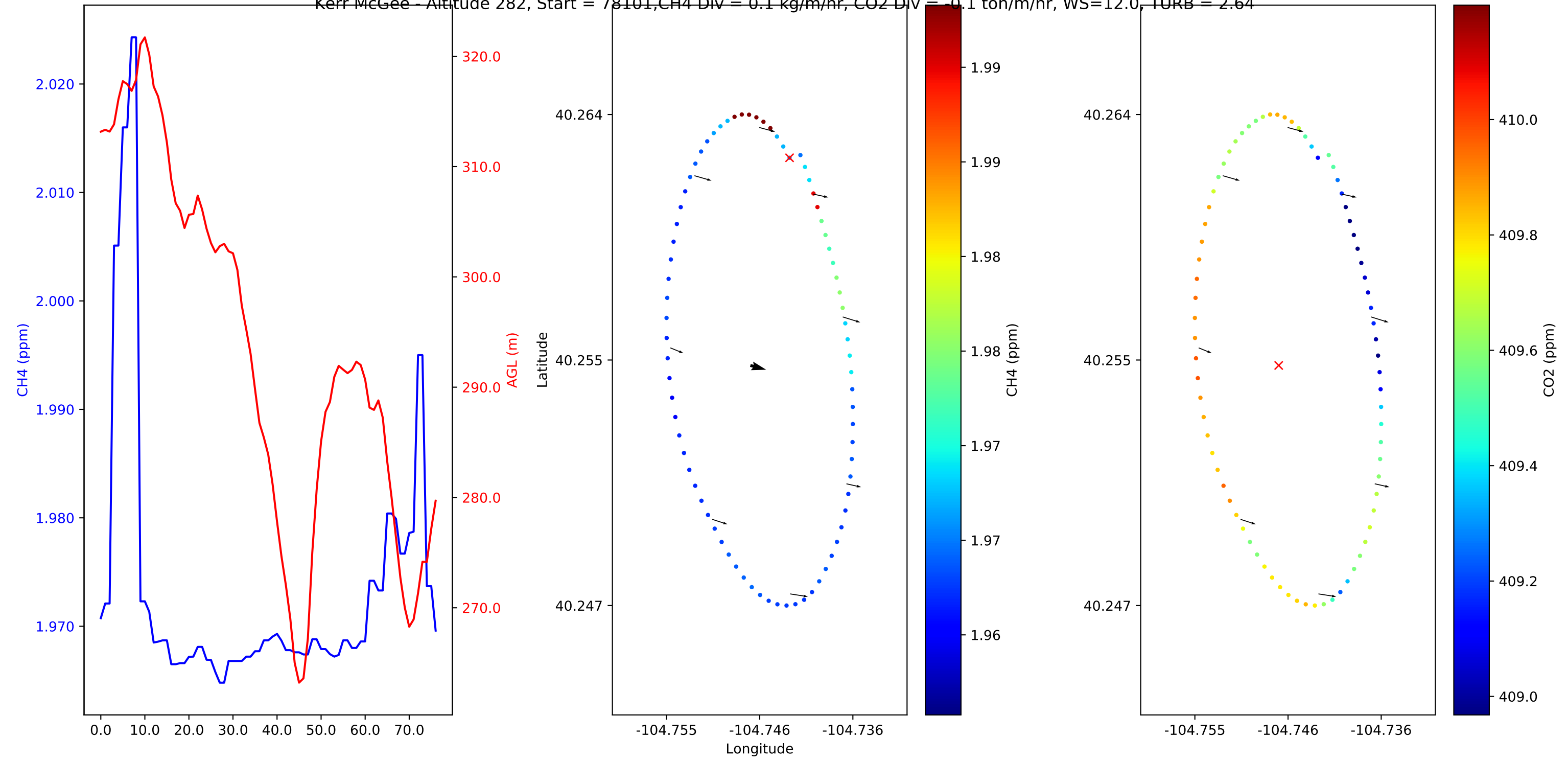
Kerr McGee - Altitude 382, Start = 77948, CH4 Div = -0.0 kg/m/hr, CO2 Div = 0.0 ton/m/hr, WS=10.1, TURB = 2.77



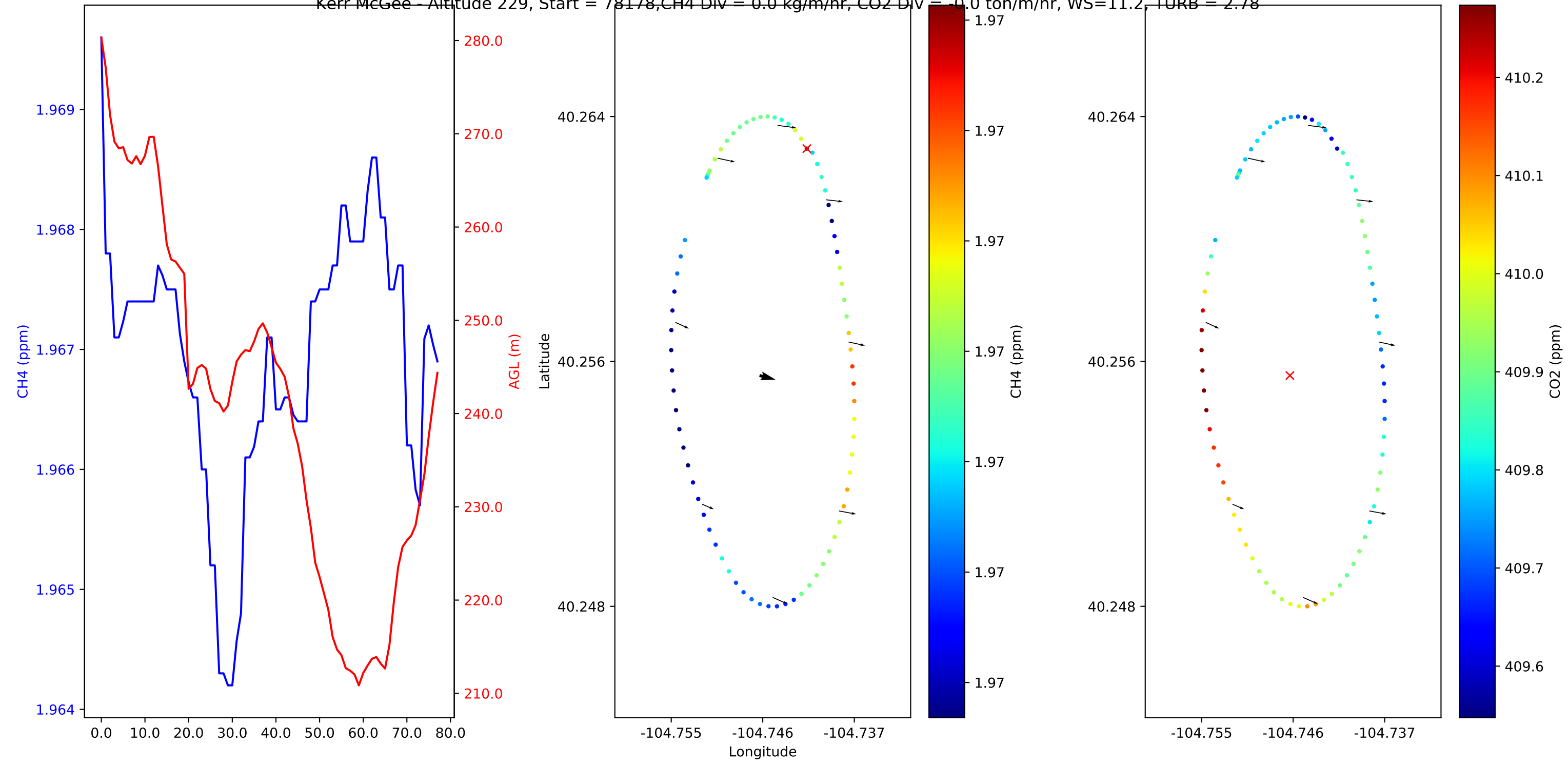
Kerr McGee - Altitude 351, Start = 78027, CH4 Div = 0.1 kg/m/hr, CO2 Div = 0.0 ton/m/hr, WS=11.8, TURB = 3.23

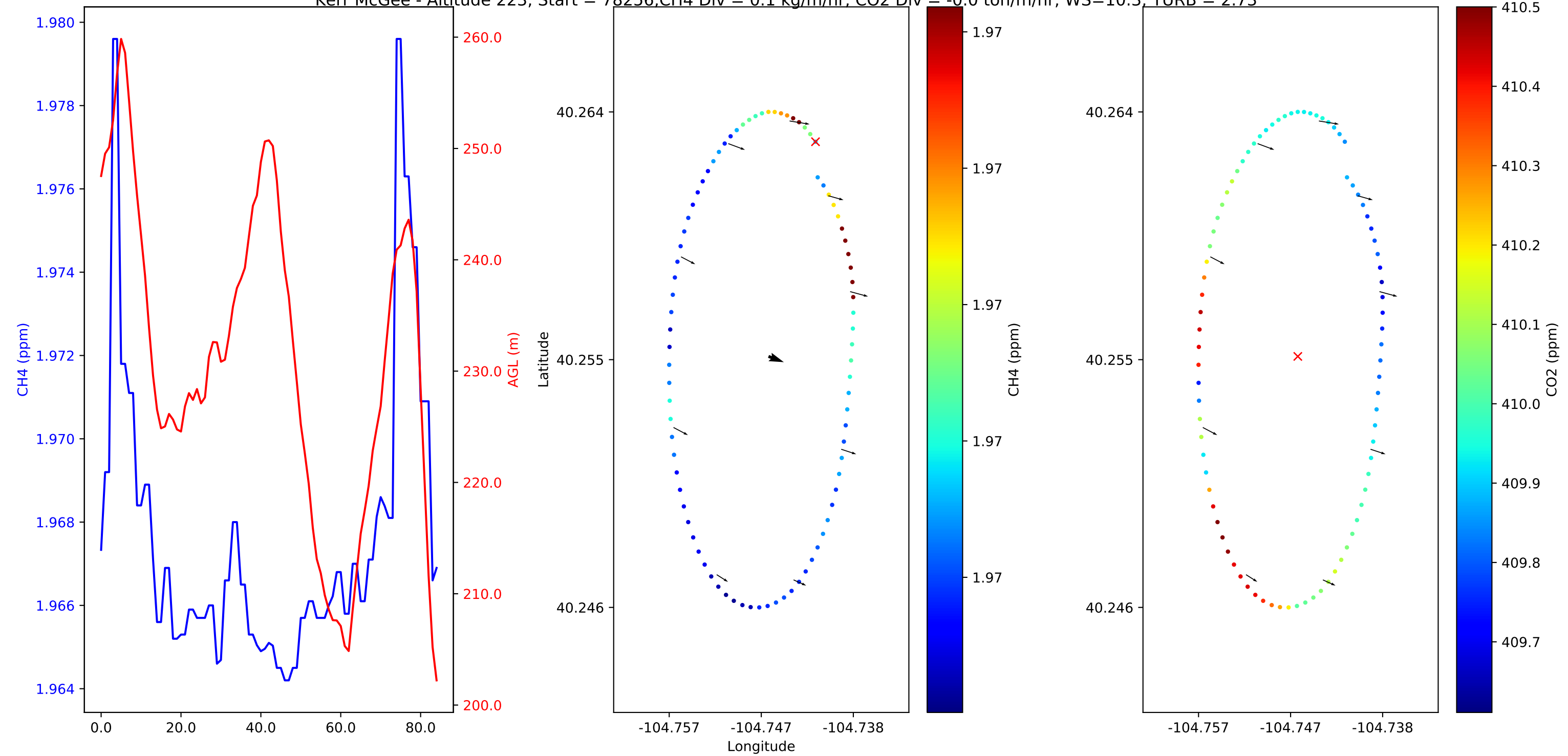


Kerr McGee - Altitude 282, Start = 78101, CH4 Div = 0.1 kg/m/hr, CO2 Div = 0.1 ton/m/hr, WS=12.0, TURB = 2.64

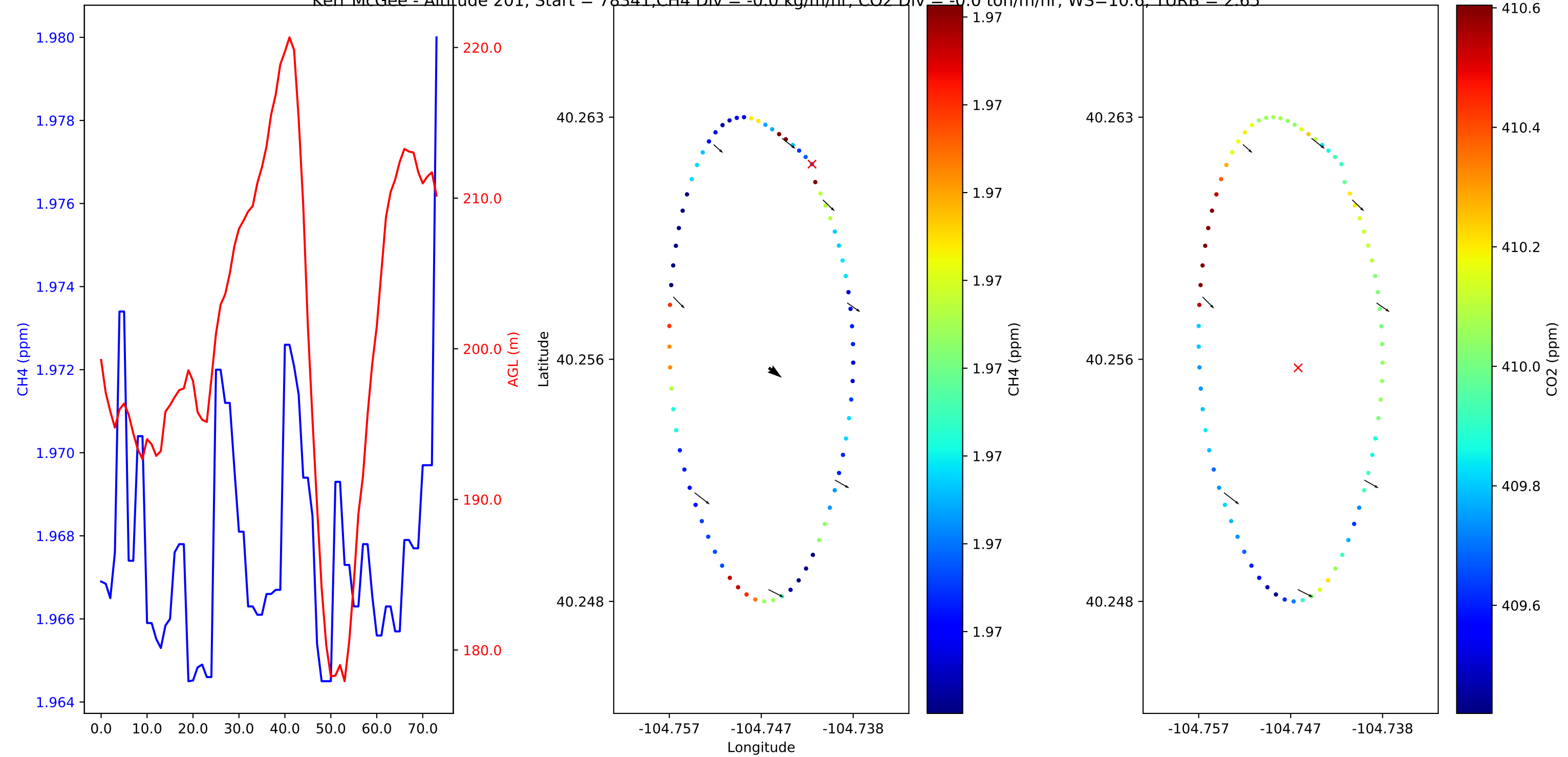


Kerr McGee - Altitude 229, Start = 78178, CH4 Div = 0.0 kg/m/hr, CO2 Div = 0.0 ton/m/hr, WS=11.2, TURB = 2.78

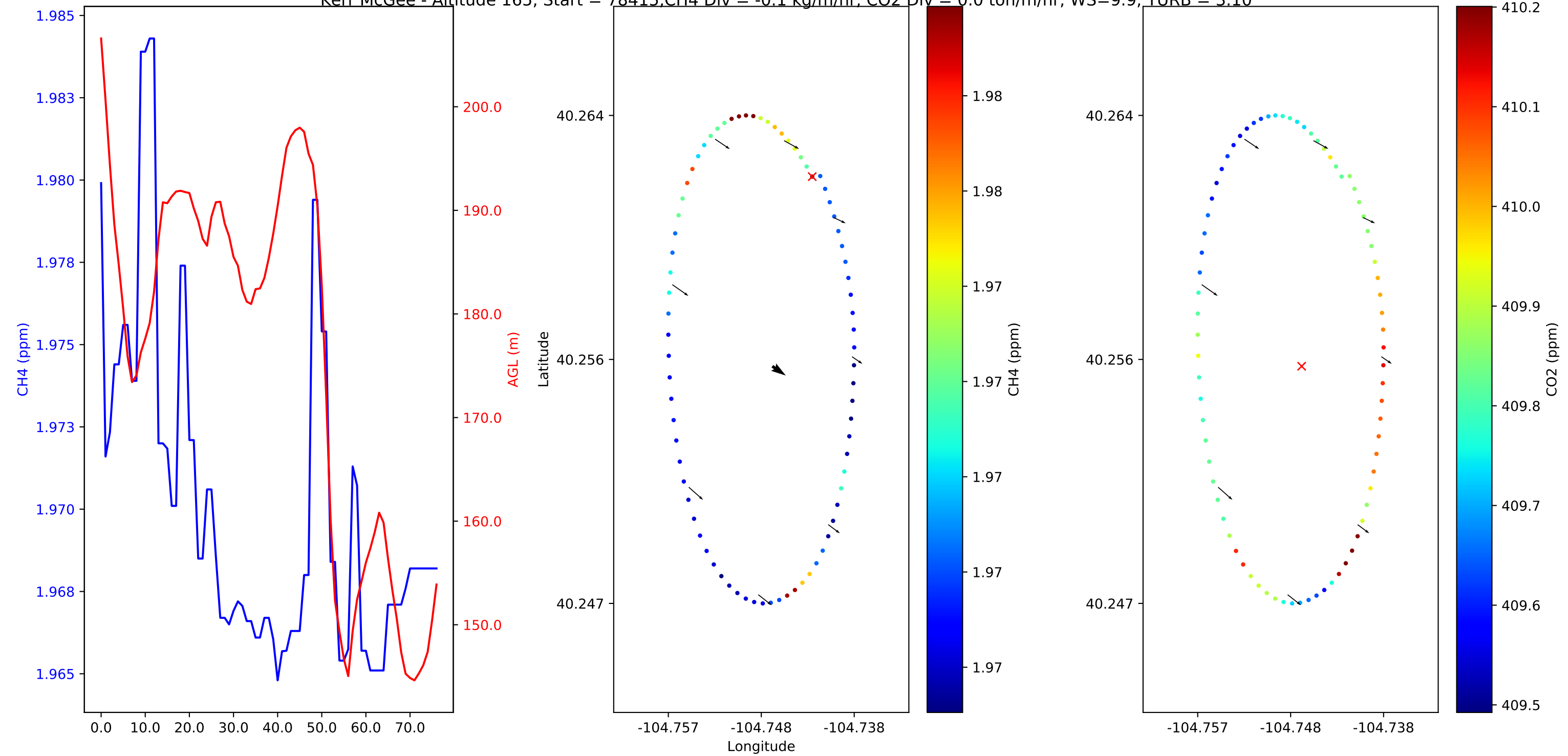




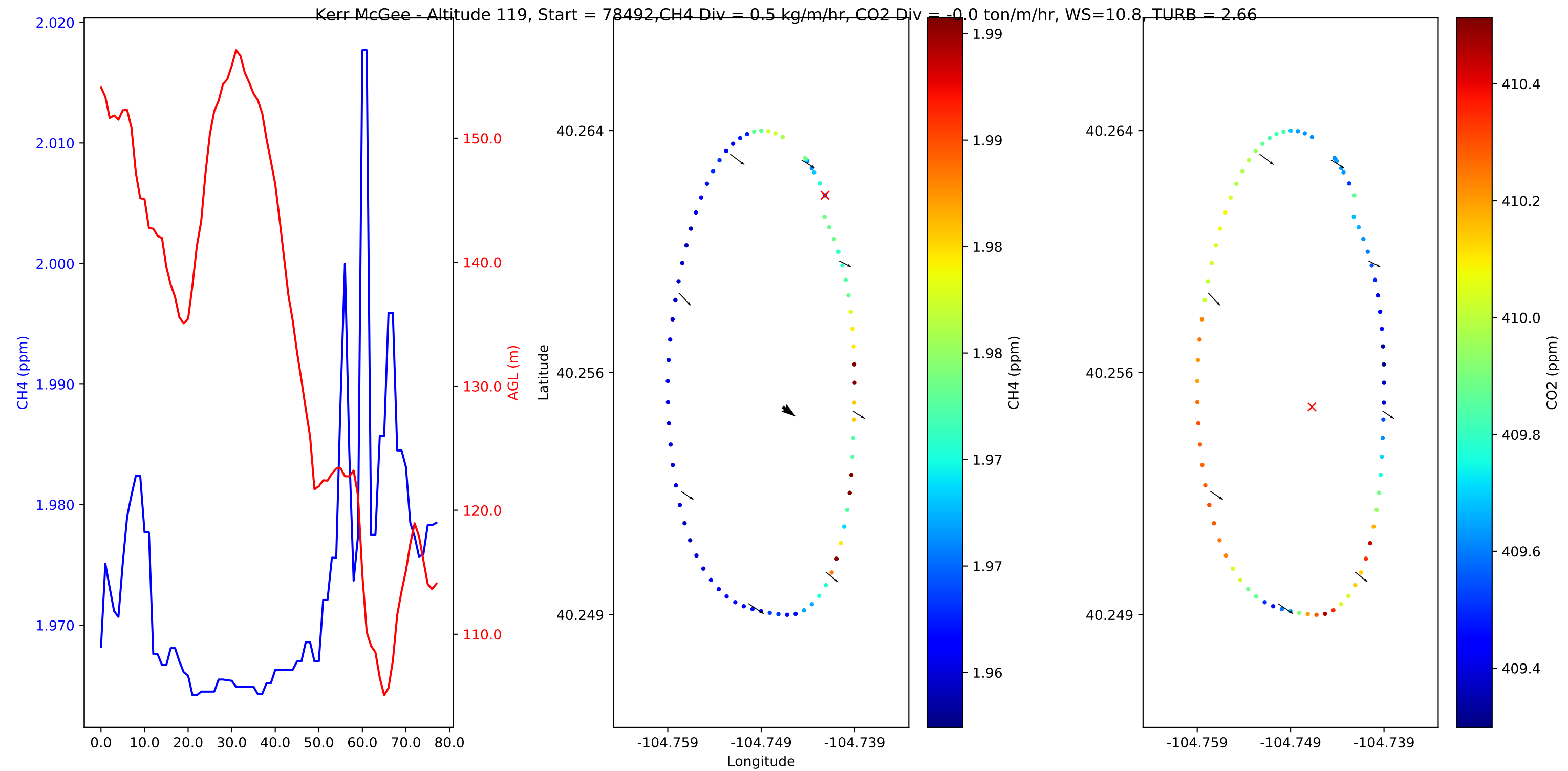
Kerr McGee - Altitude 201, Start = 78341, CH4 Div = -0.0 kg/m/hr, CO2 Div = -0.0 ton/m/hr, WS=10.6, TURB = 2.65







Kerr McGee - Altitude 119, Start = 78492, CH4 Div = 0.5 kg/m/hr, CO2 Div = -0.0 ton/m/hr, WS=10.8, TURB = 2.66



Kerr McGee - Altitude 102, Start = 78570, CH4 Div = 0.4 kg/m/hr, CO2 Div = -0.0 ton/m/hr, WS=9.8, TURB = 2.72

