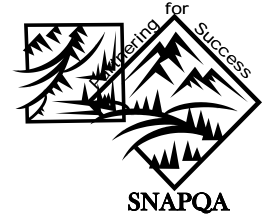




Colorado Department of Human Services
people who help people

Colorado State Department of Human Services
Office of Performance and Strategic Outcomes
SNAP Quality Assurance



**COLORADO SNAP QUALITY CONTROL
POINT-IN-TIME SUMMARY REPORT
FEDERAL FISCAL YEAR 2012**
(October 22, 2012)

NATIONAL:

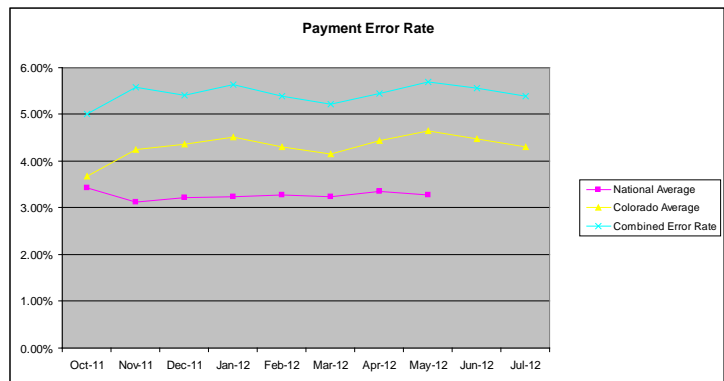
National Average Active = 3.28%
National Colorado Ranking = 39 out of 53
Mountain Plains Region Ranking = 8 out of 10

National Average Negative = 22.28%
National Colorado Ranking = 53 out of 53
Mountain Plains Region Ranking = 10

STATE:

Active Case Error Rate = **8.42%**
Active Payment Error Rate (PER) = **4.17%**
Target Goal = 3%

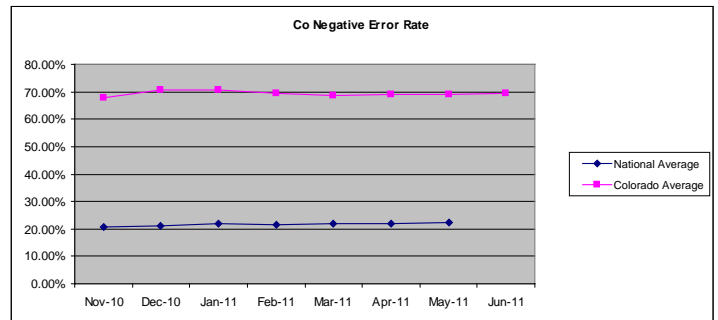
- Total Cases Reviewed = 831
- Total Cases with Errors = 70
- Total Issuance = \$235,304
- Total Misspent = \$9,808



Negative Error Rate = **68.52%**
Target Goal = 25%

- Total Cases Reviewed = 775
- Total Invalid = 531

**Negative Error Rate without
CBMS or NOAA Errors = 37.93%**



FEDERAL TIMELINESS:

State = 90.43%(Regular and EXP only)

NOTE: All Oct 2011 through June 2012 reviews are submitted (released) and data is less likely to change. Reviews for June 2012 forward are still in the process and this data will change.

SNAP QA Active Error Rates

(October 2011 through October 17, 2012)

SNAP QA obtains and monitors additional payment errors on active cases for improved trend analysis and to achieve a more accurate understanding of causes and areas-of-risk. These are: 1) payment errors at or below \$50 and 2) all payment errors regardless of amount (combined). The combined payment error rate should reflect error trends found at the local level through SNAP Case File Reviews and this figure should be used at the local level to implement program integrity activities.

State Payment Error Rate Below the Threshold:

Active Case Error Rate = **14.80%**

Active Payment Error Rate (below) = **1.05%**

Target Goal = 3%

- Total Cases Reviewed = 831
- Total Cases with Errors = 123
- Total Issuance = \$235,304
- Total Misspent = \$2,482

Combined State Payment Error Rate:

Active Case Error Rate = **23.23%**

Active Payment Error Rate (Combined) = **5.22%**

Target Goal = 3%

- Total Cases Reviewed = 831
- Total Cases with Errors = 193
- Total Issuance = \$235,304
- Total Misspent = \$12,290

FFY 2012 Trends

(October 2011 through October 17, 2012)

Payment Error by Element:

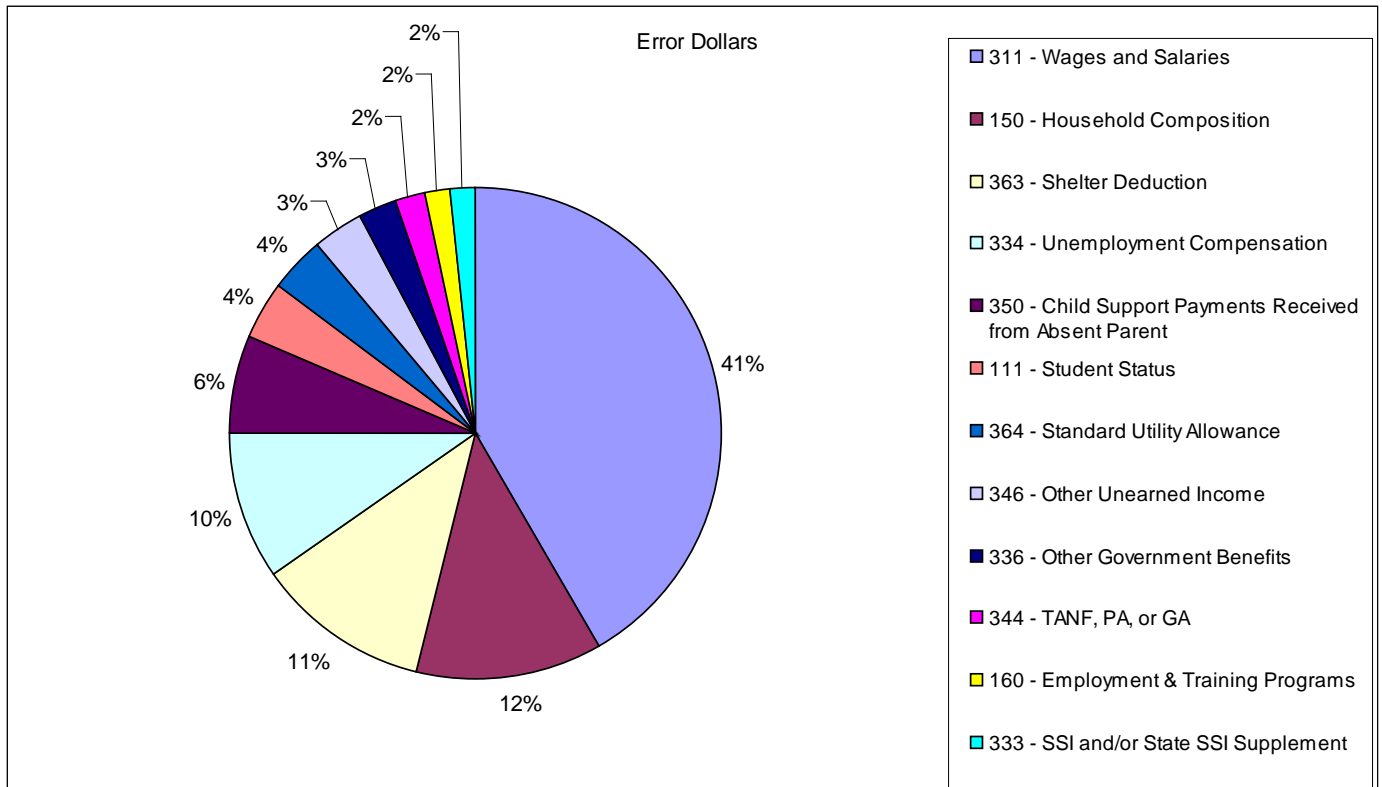
County	Income							Deductions					Other			TOTAL	
	Earned \$	Child Support \$	RSDI \$	SSI \$	TANF	UIB \$	Other \$	Child Support	Child Care	Medical	Shelter	Utilities	HH Comp	Student Status	Other	Agency	Client
Adams																	
Agency		\$120				\$145						\$118	\$87				\$470
Client	\$301																\$301
Arapahoe																	
Agency					\$177	\$694					\$109			\$159			\$1,139
Client	\$235										\$54						\$289
Boulder																	
Agency		\$55															\$55
Client	\$223										\$233						\$456
Denver																	
Agency	\$475								\$112		\$60	\$77	\$494				\$1,218
Client													\$119				\$119
El Paso																	
Agency	\$104	\$77					\$132				\$277		\$333				\$923
Client	\$177																\$177
Jefferson																	
Agency	\$536										\$161						\$697
Client																	\$0
Larimer																	
Agency							\$91				\$59		\$125	\$200			\$475
Client	\$96																\$96
Mesa																	
Agency		\$212															\$212
Client																	\$0
Pueblo																	
Agency		\$51		\$152			\$239					\$91					\$533
Client																	\$0
Weld																	
Agency				\$167			\$79				\$57						\$303
Client	\$447	\$92															\$539
Big 10 Total	\$2,594	\$607	\$0	\$319	\$177	\$839	\$541	\$0	\$112	\$0	\$1,010	\$286	\$1,158	\$359	\$0	\$6,025	\$1,977
BIG 10 Grand	\$8,002																
All Others																	
Agency	\$1,278					\$98	\$94				\$120						\$1,590
Client	\$87						\$129										\$216
All Others	\$1,365	\$0	\$0	\$0	\$0	\$98	\$223	\$0	\$0	\$0	\$120	\$0	\$0	\$0	\$0	\$1,590	\$216
Statewide	\$3,959	\$607	\$0	\$319	\$177	\$937	\$764	\$0	\$112	\$0	\$1,130	\$286	\$1,158	\$359	\$0	\$7,615	\$2,193
TOTAL	\$9,808																

FFY 2012 Trends Continued

(October 2011 through October 17,, 2012)

Payment Error Rank by Cost:

Error Elements	Error Dollars	Percent By Total	Error Cases	Percent By Total
311 - Wages and Salaries	\$3,959	40.37%	23	32.86%
150 - Household Composition	\$1,158	11.81%	8	11.43%
363 - Shelter Deduction	\$1,073	10.94%	11	15.71%
334 - Unemployment Compensation	\$937	9.55%	5	7.14%
350 - Child Support Payments Received from Absent Parent	\$607	6.19%	6	8.57%
111 - Student Status	\$359	3.66%	2	2.86%
364 - Standard Utility Allowance	\$343	3.50%	4	5.71%
346 - Other Unearned Income	\$317	3.23%	3	4.29%
336 - Other Government Benefits	\$239	2.44%	1	1.43%
344 - TANF, PA, or GA	\$177	1.80%	1	1.43%
160 - Employment & Training Programs	\$167	1.70%	1	1.43%
333 - SSI and/or State SSI Supplement	\$152	1.55%	1	1.43%
342 - Contributions	\$129	1.32%	1	1.43%
323 - Dependent Care Deduction	\$112	1.14%	2	2.86%
331 - RSDI Benefits	\$79	0.81%	1	1.43%
Totals	\$9,808	100.00%	70	100.00%

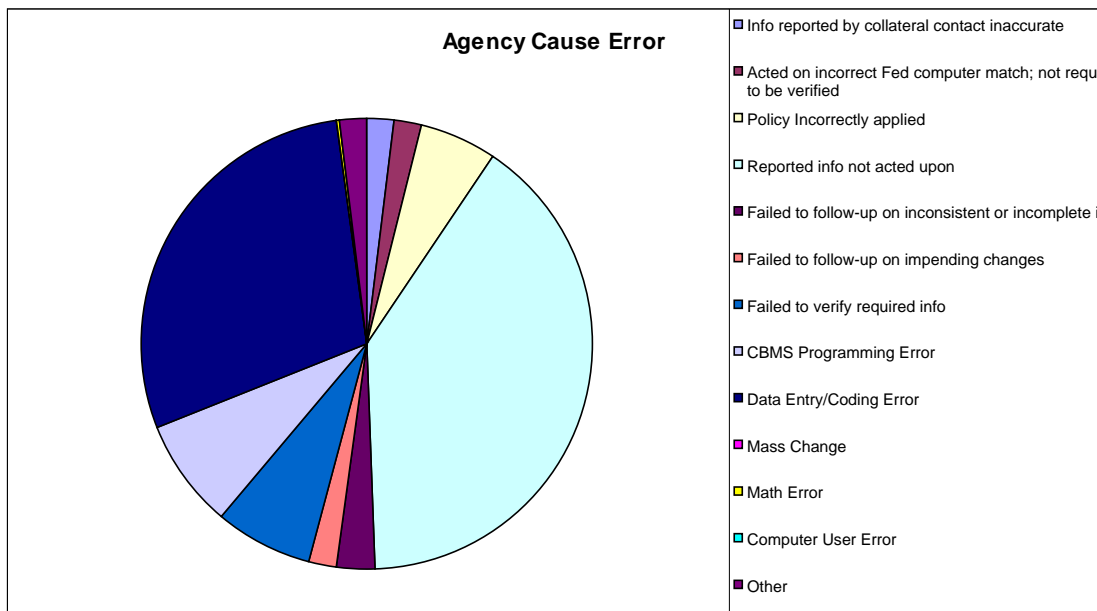


FFY 2012 Trends Continued

(October 2011 through October 17, 2012)

Payment Error Cause:

AGENCY CAUSED	# of cases	% of cases	Error Dollars	% of \$ Errors
Info reported by collateral contact inaccurate	1	0.01%	\$159	1.62%
Acted on incorrect Fed computer match; not required to be verified	1	1.43%	\$152	1.55%
Policy Incorrectly applied	3	4.29%	\$411	4.19%
Reported info not acted upon	26	37.14%	\$3,115	31.76%
Failed to follow-up on inconsistent or incomplete info	2	2.86%	\$212	2.16%
Failed to follow-up on impending changes	1	1.43%	\$145	1.48%
Failed to verify required info	3	4.29%	\$549	5.60%
CBMS Programming Error	5	7.14%	\$589	6.01%
Data Entry/Coding Error	12	17.14%	\$2,245	22.89%
Mass Change				
Math Error	1	1.43%	\$31	0.32%
Computer User Error		0.00%		0.00%
Other	2	2.86%	\$140	1.43%
SUBTOTAL	57	81.43%	\$7,748	79.00%
CLIENT CAUSED				
Fail to report	10	14.29%	\$1,433	14.61%
Incomplete or incorrect info provided		0.00%		0.00%
Info withheld	2	2.86%	\$473	4.82%
Incorrect info provided	1	1.43%	\$154	1.57%
SUBTOTAL	13	18.57%	\$2,060	21.00%
NOT SPECIFIED	1	1.43%	\$96	0.98%
SUBTOTAL				
GRAND TOTAL	70	100.00%	\$9,808	100.00%

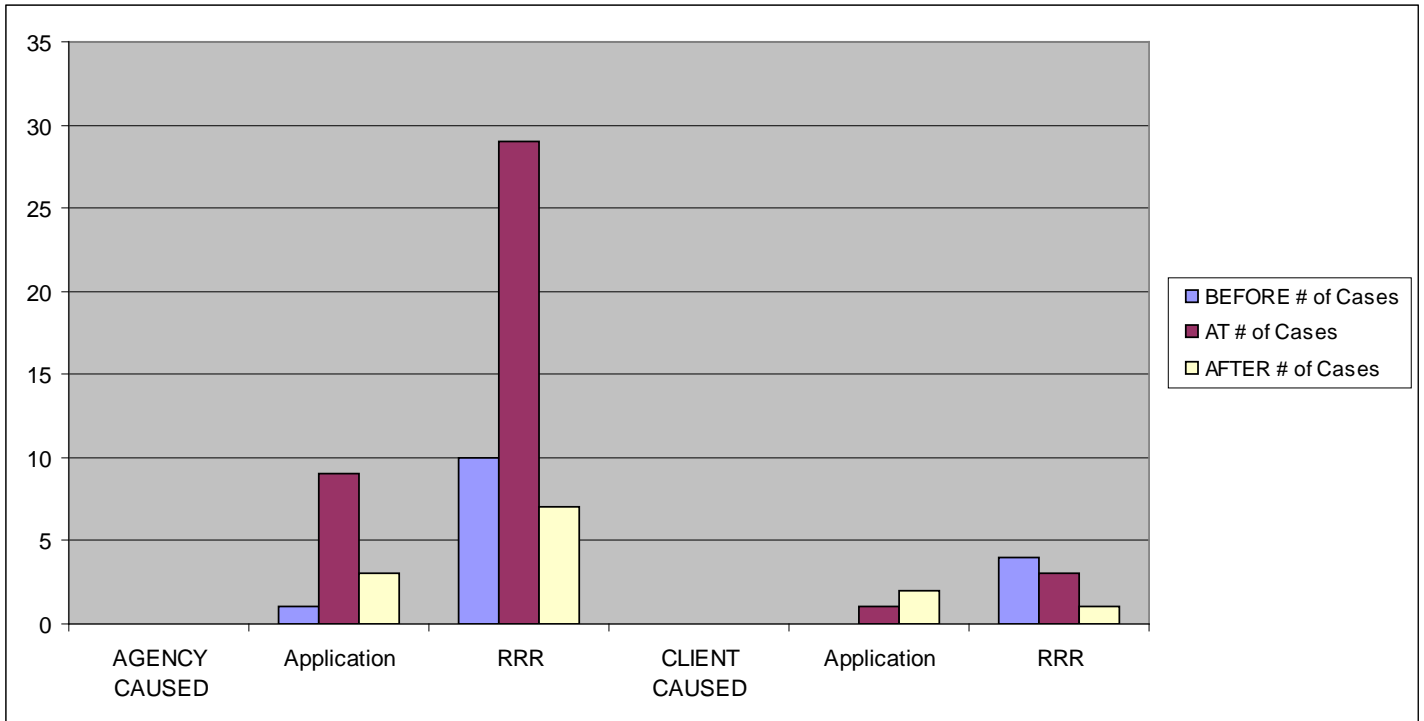


FFY 2012 Trends Continued

(October 2011 through October 17, 2012)

Payment Error by Occurrence:

Most Recent Action	BEFORE	AT	AFTER	Total
	# of Cases	# of Cases	# of Cases	
AGENCY CAUSED				
Application	1	9	3	13
RRR	10	29	7	46
Subtotal	11	38	10	59
CLIENT CAUSED				
Application		1	2	3
RRR	4	3	1	8
Subtotal	4	4	3	11
Grand Total	15	42	13	70

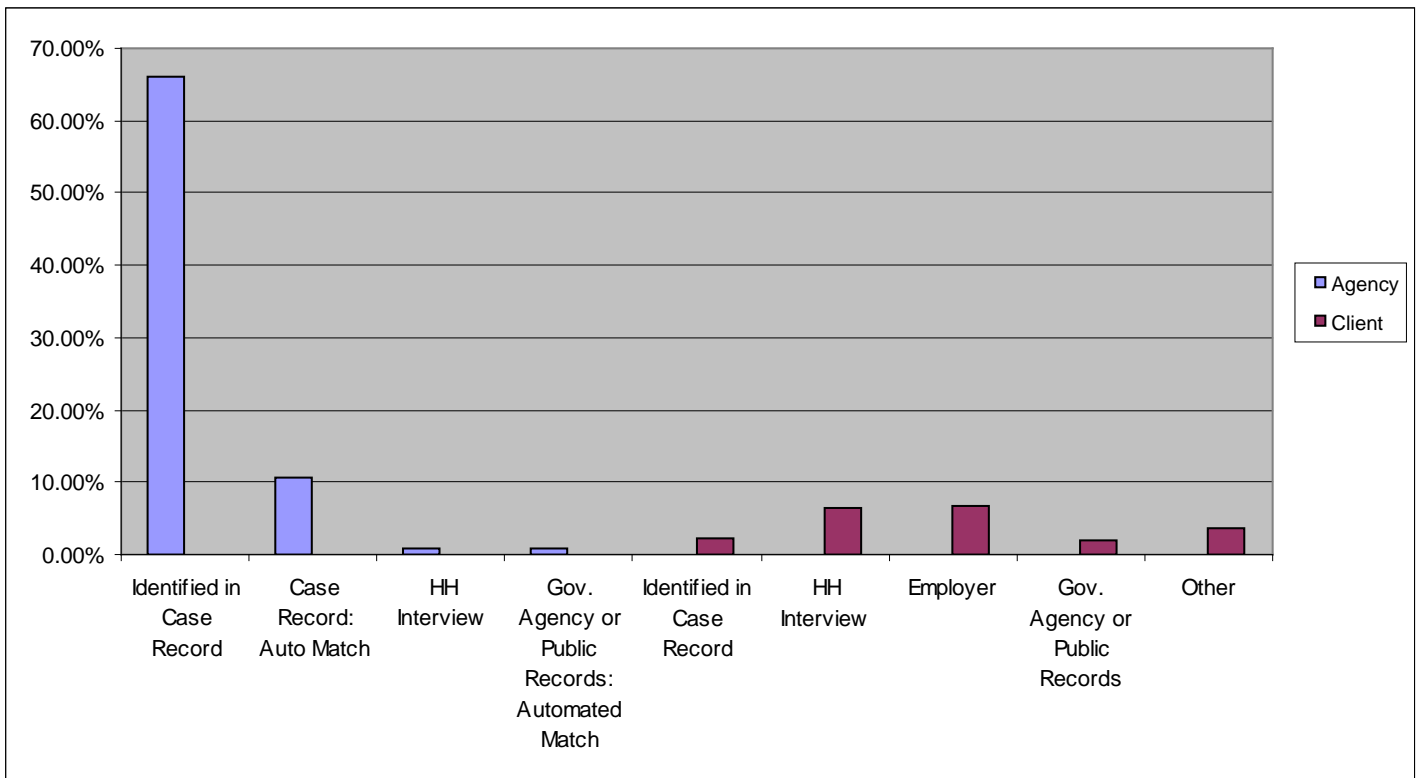


FFY 2012 Trends Continued

(October 2011 through October 17, 2012)

Payment Error by Discovery:

	Agency	Client
Identified in Case Record	66.11%	
Case Record: Auto Match	10.66%	
HH Interview	0.89%	
Gov. Agency or Public Records: Automated Match	0.81%	
Identified in Case Record		2.27%
HH Interview		6.58%
Employer		6.61%
Gov. Agency or Public Records		1.87%
Other		3.68%



FFY 2012 SNAP Active Case Review as of October 17, 2012

Federal Payment Error Rate (official):

County	Complete	Errors	Case Error Rate	COUPON ALLOTMENT	DOLLARS IN ERROR	ERROR RATE (PER)	CBMS Errors	\$ in Error	County Error Rate
Adams	90	5	5.56%	\$25,786	\$771	2.99%			
Alamosa	4	1	25.00%	\$1,606	\$87	5.42%			
Arapahoe	76	8	10.53%	\$22,670	\$1,428	6.30%	1	\$177	5.52%
Archuleta	2	0	0.00%	\$891	\$0	0.00%			
Baca	1	0	0.00%	\$16	\$0	0.00%			
Bent									
Boulder	41	4		\$9,340	\$511	5.47%	1	\$55	#REF!
Broomfield	7	0	0.00%	\$1,872	0	0.00%			
Chaffee	2	0	0.00%	\$335	\$0	0.00%			
Cheyenne									
Clear Creek	5	1	20.00%	\$1,052	\$58	5.51%			
Conejos	3	0	0.00%	\$412		0.00%			
Costilla	3	0	0.00%	\$172	\$0	0.00%			
Crowley	1		0.00%	\$381		0.00%			
Custer	1		0.00%	\$526		0.00%			
Delta	10	0	0.00%	\$2,822	\$0	0.00%			
Denver	164	14	8.54%	\$45,777	\$1,337	2.92%			
Dolores									
Douglas	9	0	0.00%	\$2,747	0	0.00%			
Eagle									
Elbert	2		0.00%	\$691		0.00%			
El Paso	96	10	10.42%	\$29,281	\$1,100	3.76%	1	\$168	3.18%
Fremont	3		0.00%	\$542		0.00%			
Garfield	8	1	12.50%	\$1,339	\$129	9.63%			
Gilpin									
Grand	1	1	100.00%	\$614	\$120	19.54%			
Gunnison	1		0.00%	\$526					
Hinsdale									
Huerfano	1	0	0.00%	\$50	0	0.00%			
Jackson	2		0.00%	\$385		0.00%			
Jefferson	58	5	8.62%	\$17,935	\$697	3.89%			
Kiowa	1		0.00%	\$526		0.00%			
Kit Carson	1	1	100.00%	\$340	\$168	49.41%			
Lake									
La Plata	7	0	0.00%	\$1,774	0	0.00%			
Larimer	33	5	15.15%	\$10,025	\$571	5.70%			
Las Animas	9	0	0.00%	\$2,105	0	0.00%			
Lincoln									
Logan	1	0	0.00%	\$358	0	0.00%			
Mesa	36	1	2.78%	\$8,720	\$212	2.43%	1	\$212	0.00%
Mineral									
Moffat	3		0.00%	\$1,139		0.00%			
Montezuma	5	0	0.00%	\$1,337	\$0	0.00%			
Montrose	12	0	0.00%	\$2,737	\$0	0.00%			
Morgan	1		0.00%	\$81		0.00%			
Otero	5	0	0.00%	\$1,613	\$0	0.00%			

County	Complete	Errors	Case Error Rate	COUPON ALLOTMENT	DOLLARS IN ERROR	ERROR RATE	CBMS Errors	\$ in Error	County Error Rate
Ouray	1		0.00%	\$200		0.00%			
Park	4		0.00%	\$1,386		0.00%			
Phillips									
Pitkin	1	0	0.00%	\$367	0	0.00%			
Prowers	6	0	0.00%	\$1,620	\$0	0.00%			
Pueblo	66	4	6.06%	\$19,190	\$533	2.78%	1	\$51	2.51%
Rio Blanco	2		0.00%	\$726		0.00%			
Rio Grande	1		0.00%	\$191		0.00%			
Routt	2	1	50.00%	\$1,374	\$1,052	76.56%			
Saguache	3	0	0.00%	\$600	\$0	0.00%			
San Juan	1		0.00%	\$367		0.00%			
San Miguel			#DIV/0!						
Sedgwick	1		0.00%	\$495		0.00%			
Summit	2	2	100.00%	\$473	\$192	40.59%			
Teller	3	0	0.00%	\$673	\$0	0.00%			
Washington	1	0	0.00%	\$367	0	0.00%			
Weld	31	6	19.35%	\$8,516	\$842	9.89%			
Yuma	1	0	0.00%	\$236	0	0.00%			
TOTAL	831	70	8.42%	\$235,304	\$9,808	4.17%	5	\$663	3.89%

It is critical that counties with a payment error rate in excess of 3.5% take measures to reduce the payment error rate in the county in order to ensure payment accuracy and that the state as a whole meets or exceeds a Payment Error Rate of less than the National Average.

FFY 2012 SNAP Active Case Review as of October 17, 2012

Combined Payment Error Rate:

County	Complete	\$> Threshold (PER)	\$< Threshold	Case Error Rate	COUPON ALLOTMENT	DOLLARS IN ERROR	Threshold \$ Errors
Adams	90	5	13	20.00%	\$25,786	\$771	\$226
Alamosa	4	1		25.00%	\$1,606	\$87	
Arapahoe	76	8	9	22.37%	\$22,670	\$1,428	\$198
Archuleta	2	0	1	50.00%	\$891	\$0	\$10
Baca	1	0		0.00%	\$16	\$0	
Bent				#DIV/0!			
Boulder	41	4	9	31.71%	\$9,340	\$511	\$173
Broomfield	7	0		0.00%	\$1,872	0	
Chaffee	2	0		0.00%	\$335	\$0	
Cheyenne				#DIV/0!			
Clear Creek	5	1		20.00%	\$1,052	\$58	
Conejos	3	0		0.00%	\$412		
Costilla	3	0	1	33.33%	\$172	\$0	\$6
Crowley	1			0.00%	\$381		
Custer	1			0.00%	\$526		
Delta	10	0		0.00%	\$2,822	\$0	
Denver	164	14	23	22.56%	\$45,777	\$1,337	\$458
Dolores				#DIV/0!			
Douglas	9	0	2	22.22%	\$2,747	0	\$32
Eagle				#DIV/0!			
Elbert	2			0.00%	\$691		
El Paso	96	10	16	27.08%	\$29,281	\$1,100	\$287
Fremont	3			0.00%	\$542		
Garfield	8	1	3	50.00%	\$1,339	\$129	\$33
Gilpin				#DIV/0!			
Grand	1	1		100.00%	\$614	\$120	
Gunnison	1			0.00%	\$526		
Hinsdale				#DIV/0!			
Huerfano	1	0		0.00%	\$50	0	
Jackson	2		1	50.00%	\$385		\$43
Jefferson	58	5	12	29.31%	\$17,935	\$697	\$278
Kiowa	1			0.00%	\$526		
Kit Carson	1	1		100.00%	\$340	\$168	
Lake				#DIV/0!			
La Plata	7	0	2	28.57%	\$1,774	0	\$46
Larimer	33	5	1	18.18%	\$10,025	\$571	\$48
Las Animas	9	0	1	11.11%	\$2,105	0	\$17
Lincoln				#DIV/0!			
Logan	1	0		0.00%	\$358	0	
Mesa	36	1	6	19.44%	\$8,720	\$212	\$151
Mineral				#DIV/0!			
Moffat	3			0.00%	\$1,139		
Montezuma	5	0		0.00%	\$1,337	\$0	
Montrose	12	0	1	8.33%	\$2,737	\$0	\$5
Morgan	1			0.00%	\$81		
Otero	5	0		0.00%	\$1,613	\$0	

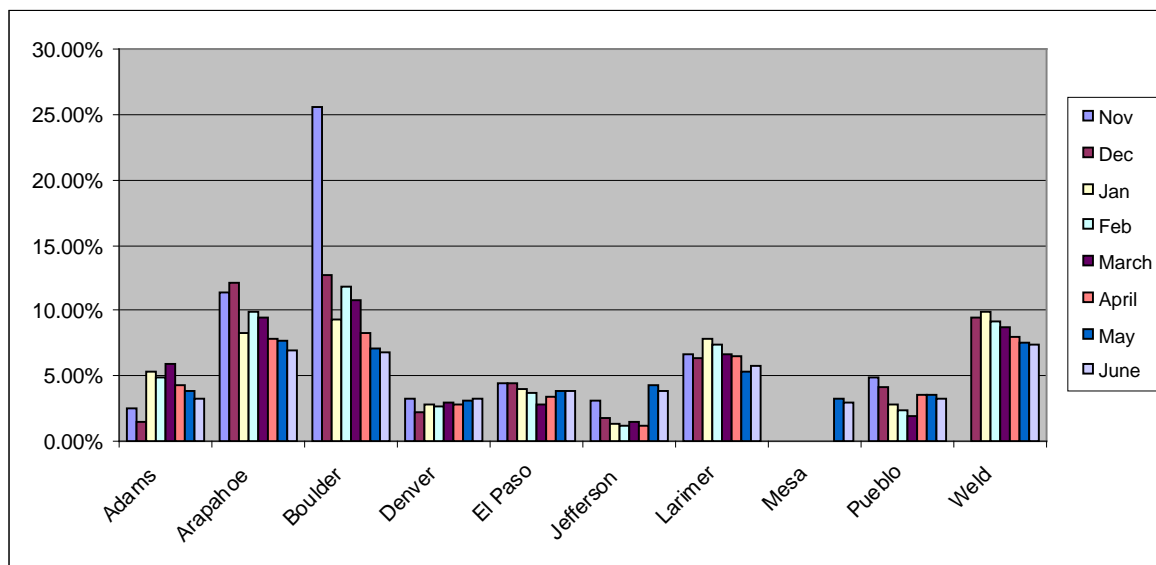
County	Complete	Errors	\$< Threshold	Case Error Rate	COUPON ALLOTMENT	DOLLARS IN ERROR	Threshold \$ Errors	ERROR RATE
Ouray	1			0.00%	\$200			0.00%
Park	4			0.00%	\$1,386			0.00%
Phillips				#DIV/0!				#DIV/0!
Pitkin	1	0		0.00%	\$367	0		0.00%
Prowers	6	0	2	33.33%	\$1,620	\$0	\$37	2.28%
Pueblo	66	4	15	28.79%	\$19,190	\$533	\$308	4.38%
Rio Blanco	2			0.00%	\$726			0.00%
Rio Grande	1			0.00%	\$191			0.00%
Routt	2	1	1	100.00%	\$1,374	\$1,052	\$15	77.66%
Saguache	3	0	1	33.33%	\$600	\$0	\$35	5.83%
San Juan	1			0.00%	\$367			0.00%
San Miguel				#DIV/0!				#DIV/0!
Sedgwick	1			0.00%	\$495			0.00%
Summit	2	2		100.00%	\$473	\$192		40.59%
Teller	3	0		0.00%	\$673	\$0		0.00%
Washington	1	0		0.00%	\$367	0		0.00%
Weld	31	6	3	29.03%	\$8,516	\$842	\$76	10.78%
Yuma	1	0		0.00%	\$236	0		0.00%
TOTAL	831	70	123	23.23%	\$235,304	\$9,808	\$2,482	5.22%

FFY 2012 SNAP Active Case Review as of October 17, 2012

Big 10 Counties

Cumulative:

Month	County										TOTAL
	Adams	Arapahoe	Boulder	Denver	El Paso	Jefferson	Larimer	Mesa	Pueblo	Weld	
Oct-11											
Complete	8	11	3	12	5	7	4	4	5	4	63
Errors	0	1	2	0	1	0	1	0	1	0	6
PER	0.00%	8.14%	39.27%	0.00%	5.09%	0.00%	5.71%	0.00%	10.62%	0.00%	4.67%
Nov-11											
Complete	17	16	6	23	18	13	7	8	14	8	130
Errors	1	2	2	3	3	1	2	0	2	0	16
PER	2.49%	11.43%	25.51%	3.25%	4.50%	3.13%	6.59%	0.00%	4.83%	0.00%	4.90%
Dec-11											
Complete	27	21	11	39	25	21	11	13	18	16	202
Errors	1	4	2	3	5	1	3	0	2	2	23
PER	1.47%	12.19%	12.76%	2.22%	4.41%	1.83%	6.29%	0.00%	4.21%	9.52%	4.76%
Jan-12											0
Complete	36	30	15	53	35	27	17	13	26	19	271
Errors	3	4	2	4	6	1	4	0	2	3	29
PER	5.32%	8.28%	9.24%	2.79%	4.05%	1.38%	7.86%	0.00%	2.79%	9.95%	4.78%
Feb-12											0
Complete	42	40	19	76	40	31	18	16	33	20	335
Errors	3	6	4	5	6	1	4	0	2	3	34
PER	4.83%	9.94%	11.85%	2.60%	3.74%	1.14%	7.38%	0.00%	2.33%	9.13%	4.73%
Mar-12											0
Complete	49	47	21	92	55	38	21	19	37	23	402
Errors	5	7	4	7	6	2	4	0	2	4	41
PER	5.84%	9.51%	10.79%	2.99%	2.80%	1.43%	6.70%	0.00%	1.99%	8.74%	4.52%
Apr-12											0
Complete	61	55	26	112	69	43	23	24	42	26	481
Errors	5	7	4	9	8	2	4	0	3	4	46
PER	4.30%	7.76%	8.33%	2.74%	3.43%	1.25%	6.49%	0.00%	3.60%	7.94%	4.15%
May-12											0
Complete	70	61	31	126	81	48	28	27	48	28	548
Errors	5	8	4	11	9	4	4	1	4	4	54
PER	3.78%	7.73%	7.11%	3.08%	3.82%	4.26%	5.32%	3.24%	3.48%	7.61%	4.49%
Jun-12											0
Complete	81	69	35	143	90	51	32	31	54	29	615
Errors	5	8	4	14	10	4	5	1	4	4	59
PER	3.23%	6.94%	6.75%	3.25%	3.89%	3.84%	5.81%	2.98%	3.20%	7.42%	4.29%



FY 2012 SNAP Negative Case Review as of October 17, 2012

County	Complete	Errors	Neg Case Error Rate	CBMS/ NOAA Errors	County Error Rate
Adams	59	44	74.58%	26	30.51%
Alamosa	4	2	50.00%	4	-50.00%
Arapahoe	111	78	70.27%	42	32.43%
Archuleta			#DIV/0!		#DIV/0!
Baca					
Bent	1	1	100.00%	1	0.00%
Boulder	36	24	66.67%	14	27.78%
Broomfield	8	3	37.50%	2	12.50%
Chaffee	6	5	83.33%		83.33%
Cheyenne					
Clear Creek					
Conejos	1	1	100.00%		100.00%
Costilla					
Crowley	1	0	0.00%		0.00%
Custer					
Delta	4	4	100.00%	1	75.00%
Denver	134	89	66.42%	37	38.81%
Dolores					
Douglas	10	8	80.00%	5	30.00%
Eagle	2	2	100.00%	3	-50.00%
El Paso	108	79	73.15%	37	38.89%
Elbert	2	2	100.00%	1	50.00%
Fremont	13	8	61.54%	4	30.77%
Garfield	6	5	83.33%	3	33.33%
Gilpin					
Grand	1	1	100.00%	1	0.00%
Gunnison					
Hinsdale					
Huerfano	3	1	33.33%		33.33%
Jackson					
Jefferson	53	40	75.47%	16	45.28%
Kiowa					
Kit Carson					
Lake	1		0.00%		0.00%
La Plata	9	4	44.44%	4	0.00%
Larimer	32	17	53.13%	10	21.88%
Las Animas	9	5	55.56%	3	22.22%
Lincoln					
Logan	5	4	80.00%	3	20.00%
Mesa	24	18	75.00%	11	29.17%
Mineral					
Moffat	4	3	75.00%	3	0.00%
Montezuma	3	1	33.33%		33.33%
Montrose	8	4	50.00%	3	12.50%
Morgan	8	5	62.50%	2	37.50%
Otero	4	3	75.00%	1	50.00%

County	Complete	Errors	Neg Case Error Rate	CBMS/ NOAA Errors	County Error Rate
Ouray					
Park					
Phillips					
Pitkin	2	2	100.00%		100.00%
Prowers	2	2	100.00%	2	0.00%
Pueblo	40	26	65.00%	16	25.00%
Rio Blanco					
Rio Grande	5	4	80.00%	2	40.00%
Routt	1	1	100.00%		100.00%
Saguache	1	1	100.00%		100.00%
San Juan					
San Miguel	2	2	100.00%	1	50.00%
Sedgwick	1	1	100.00%		100.00%
Summit					
Teller	4	3	75.00%	2	25.00%
Washington					
Weld	47	28	59.57%	17	23.40%
Yuma					
TOTAL	775	531	68.52%	277	32.77%

NOTE: The County Error Rate determination is based on a manual process and displays approximately a 1-month delay. The blue columns reflect the data transmitted to the Federal Office and it takes up to 1 additional month after the Federal data is posted to fully review each file for responsible party for the error (i.e., state or county). This means the county error rate is accurate only for the point in time and does not reflect any of the outstanding reviews. **Based on the reviews to date, approximately 52.44% of the errors are the responsibility of the State.**

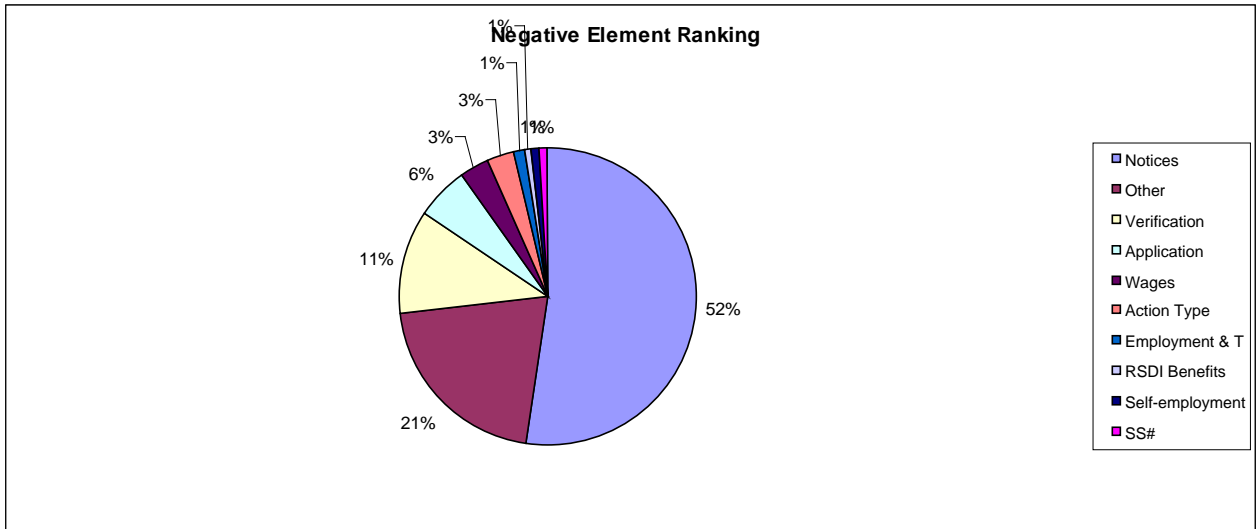
NOTE 2: As of August 22, 2012, duplicate Adverse Action Notices are being suppressed; therefore, it is likely that the number and percentage of error cited as a state responsibility will significantly decrease.

FFY 2012 Negative Error Trends

(October 2011 through October 17, 2012)

Negative Error Ranking:

Element	Invalid #	% Of total
Notices	262	52.09%
Other	106	21.07%
Verification	57	11.33%
Application	29	5.77%
Wages	16	3.18%
Action Type	15	2.98%
Employment & T	6	1.19%
RSDI Benefits	4	0.80%
Self-employment	4	0.80%
SS#	4	0.80%
TOTAL	503	100.00%



SNAP Federal Timeliness of October 17, 2012

County	TIMELY (Reg and EXP)		NOT TIMELY (Reg and EXP)		OTHER (Prior to FFY)		TIMELINESS TOTAL		% OF STATE TOTAL CASES REVIEWED	% OF STATE TIMELINES S RATE
	#	% of Sample	#	% of Sample	#	% of Sample	TOTAL CASES	TIMELINE SS RATE	%	%
Adams	31	31.00%	4	4.00%	65	65.00%	100	88.57%	11.17%	12.16%
Alamosa	0	0.00%	0	0.00%	4	100.00%	4		0.45%	0.00%
Arapahoe	19	24.05%	1	1.27%	59	74.68%	79	95.00%	8.83%	7.45%
Archuleta	2	100.00%	0	0.00%	0	0.00%	2	100.00%	0.22%	0.78%
Baca	1	100.00%	0	0.00%	0	0.00%	1	100.00%	0.11%	0.39%
Boulder	16	36.36%	2	4.55%	26	59.09%	44	88.89%	4.92%	6.27%
Broomfield	3	37.50%	0	0.00%	5	62.50%	8	100.00%	0.89%	1.18%
Chaffee	1	33.33%	0	0.00%	2	66.67%	3	100.00%	0.34%	0.39%
Clear Creek	1	20.00%	0	0.00%	4	80.00%	5	100.00%	0.56%	0.39%
Conejos	0	0.00%	0	0.00%	3	100.00%	3		0.34%	0.00%
Costilla	0	0.00%	0	0.00%	3	100.00%	3		0.34%	0.00%
Crowley	1	100.00%	0	0.00%	0	0.00%	1	100.00%	0.11%	0.39%
Custer	0	0.00%	0	0.00%	1	100.00%	1		0.11%	0.00%
Delta	1	10.00%	0	0.00%	9	90.00%	10	100.00%	1.12%	0.39%
Denver	36	20.93%	8	4.65%	128	74.42%	172	81.82%	19.22%	14.12%
Douglas	6	46.15%	0	0.00%	7	53.85%	13	100.00%	1.45%	2.35%
Eagle	0	0.00%	0	0.00%	1	100.00%	1		0.11%	0.00%
Elbert	0	0.00%	0	0.00%	2	100.00%	2		0.22%	0.00%
El Paso	36	35.29%	4	3.92%	62	60.78%	102	90.00%	11.40%	14.12%
Fremont	0	0.00%	0	0.00%	3	100.00%	3		0.34%	0.00%
Garfield	1	12.50%	0	0.00%	7	87.50%	8	100.00%	0.89%	0.39%
Grand	0	0.00%	0	0.00%	1	100.00%	1		0.11%	0.00%
Gunnison	1	100.00%	0	0.00%	0	0.00%	1	100.00%	0.11%	0.39%
Huerfano	1	100.00%	0	0.00%	0	0.00%	1	100.00%	0.11%	0.39%
Jackson	0	0.00%	0	0.00%	2	100.00%	2		0.22%	0.00%
Jefferson	18	28.57%	2	3.17%	43	68.25%	63	90.00%	7.04%	7.06%

SNAP Federal Timeliness of October 17, 2012

County	TIMELY (Reg and EXP)		NOT TIMELY (Reg and EXP)		OTHER (Prior to FFY)		TIMELINESS TOTAL		% OF STATE TOTAL CASES REVIEWED	% OF STATE TIMELINES S RATE
	#	% of Sample	#	% of Sample	#	% of Sample	TOTAL CASES	TIMELINE SS RATE		
Kiowa	0	0.00%	0	0.00%	1	100.00%	1		0.11%	0.00%
Kit Carson	0	0.00%	0	0.00%	1	100.00%	1		0.11%	0.00%
La Plata	1	14.29%	0	0.00%	6	85.71%	7	100.00%	0.78%	0.39%
Larimer	12	32.43%	1	2.70%	24	64.86%	37	92.31%	4.13%	4.71%
Las Animas	3	33.33%	1	11.11%	5	55.56%	9	75.00%	1.01%	1.18%
Logan	0	0.00%	0	0.00%	1	100.00%	1		0.11%	0.00%
Mesa	9	25.00%	0	0.00%	27	75.00%	36	100.00%	4.02%	3.53%
Moffat	0	0.00%	1	33.33%	2	66.67%	3	0.00%	0.34%	0.00%
Montezuma	0	0.00%	0	0.00%	6	100.00%	6		0.67%	0.00%
Montrose	4	30.77%	0	0.00%	9	69.23%	13	100.00%	1.45%	1.57%
Morgan	1	100.00%	0	0.00%	0	0.00%	1	100.00%	0.11%	0.39%
Otero	2	40.00%	0	0.00%	3	60.00%	5	100.00%	0.56%	0.78%
Ouray	1	100.00%	0	0.00%	0	0.00%	1	100.00%	0.11%	0.39%
Park	0	0.00%	1	25.00%	3	75.00%	4	0.00%	0.45%	0.00%
Pitken	0	0.00%	0	0.00%	1	100.00%	1		0.11%	0.00%
Prowers	1	16.67%	1	16.67%	4	66.67%	6	50.00%	0.67%	0.39%
Pueblo	25	33.78%	1	1.35%	48	64.86%	74	96.15%	8.27%	9.80%
Rio Blanco	2	100.00%	0	0.00%	0	0.00%	2	100.00%	0.22%	0.78%
Rio Grande	3	100.00%	0	0.00%	0	0.00%	3	100.00%	0.34%	1.18%
Routt	1	33.33%	0	0.00%	2	66.67%	3	100.00%	0.34%	0.39%
Saguache	1	33.33%	0	0.00%	2	66.67%	3	100.00%	0.34%	0.39%
San Juan	0	0.00%	0	0.00%	1	100.00%	1		0.11%	0.00%
Sedgwick	1	100.00%	0	0.00%	0	0.00%	1	100.00%	0.11%	0.39%
Summit	0	0.00%	0	0.00%	2	100.00%	2		0.22%	0.00%
Teller	2	40.00%	0	0.00%	3	60.00%	5	100.00%	0.56%	0.78%
Washington	0	0.00%	0	0.00%	1	100.00%	1		0.11%	0.00%
Weld	11	32.35%	0	0.00%	23	67.65%	34	100.00%	3.80%	4.31%
Yuma	0	0.00%	0	0.00%	1	100.00%	1		0.11%	0.00%
TOTAL	255	28.49%	27	3.02%	613	68.49%	895	90.43%	100%	100%