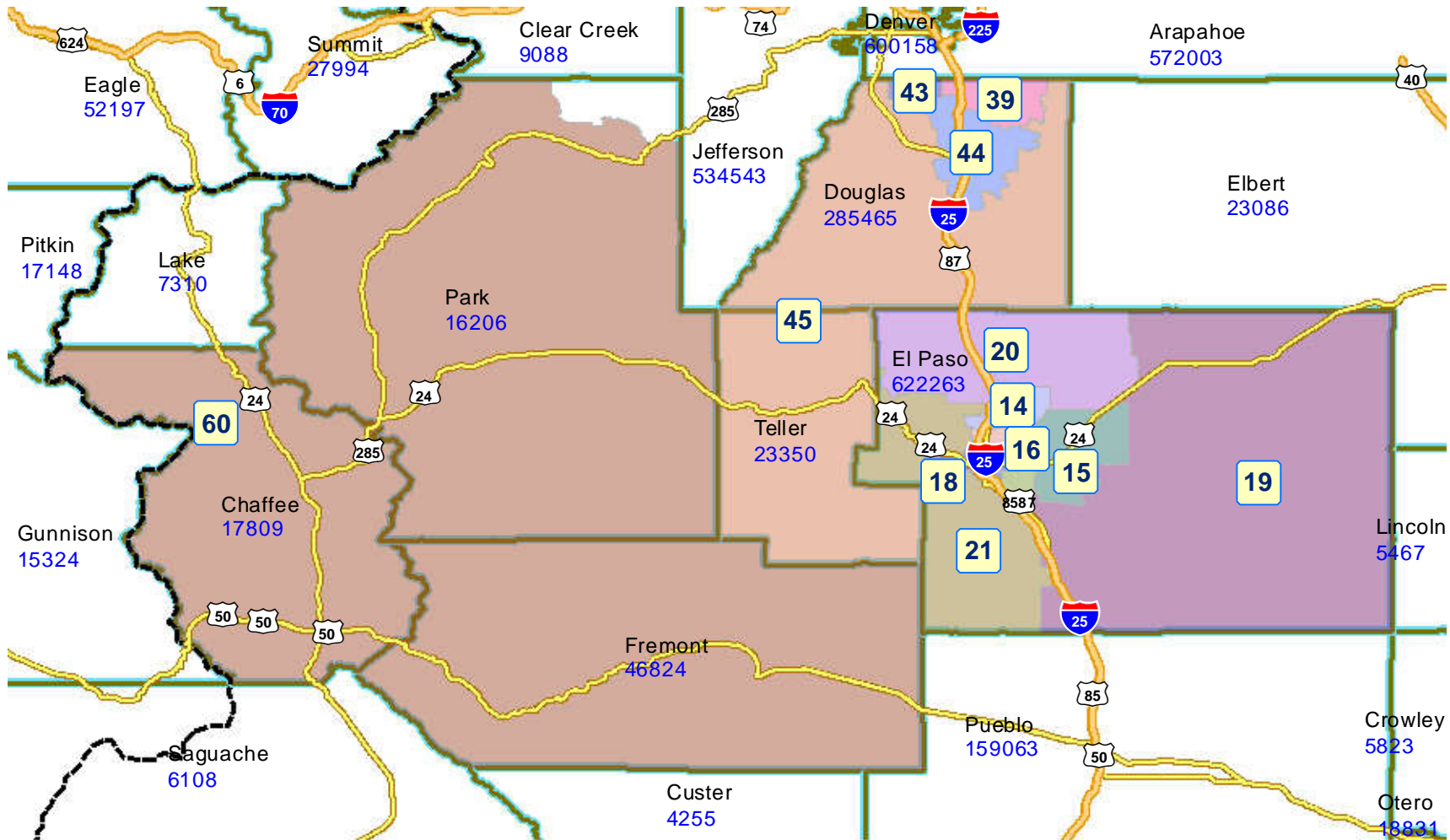
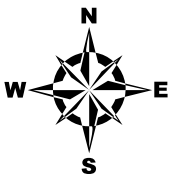


# House Region Four Plan - H4001v1

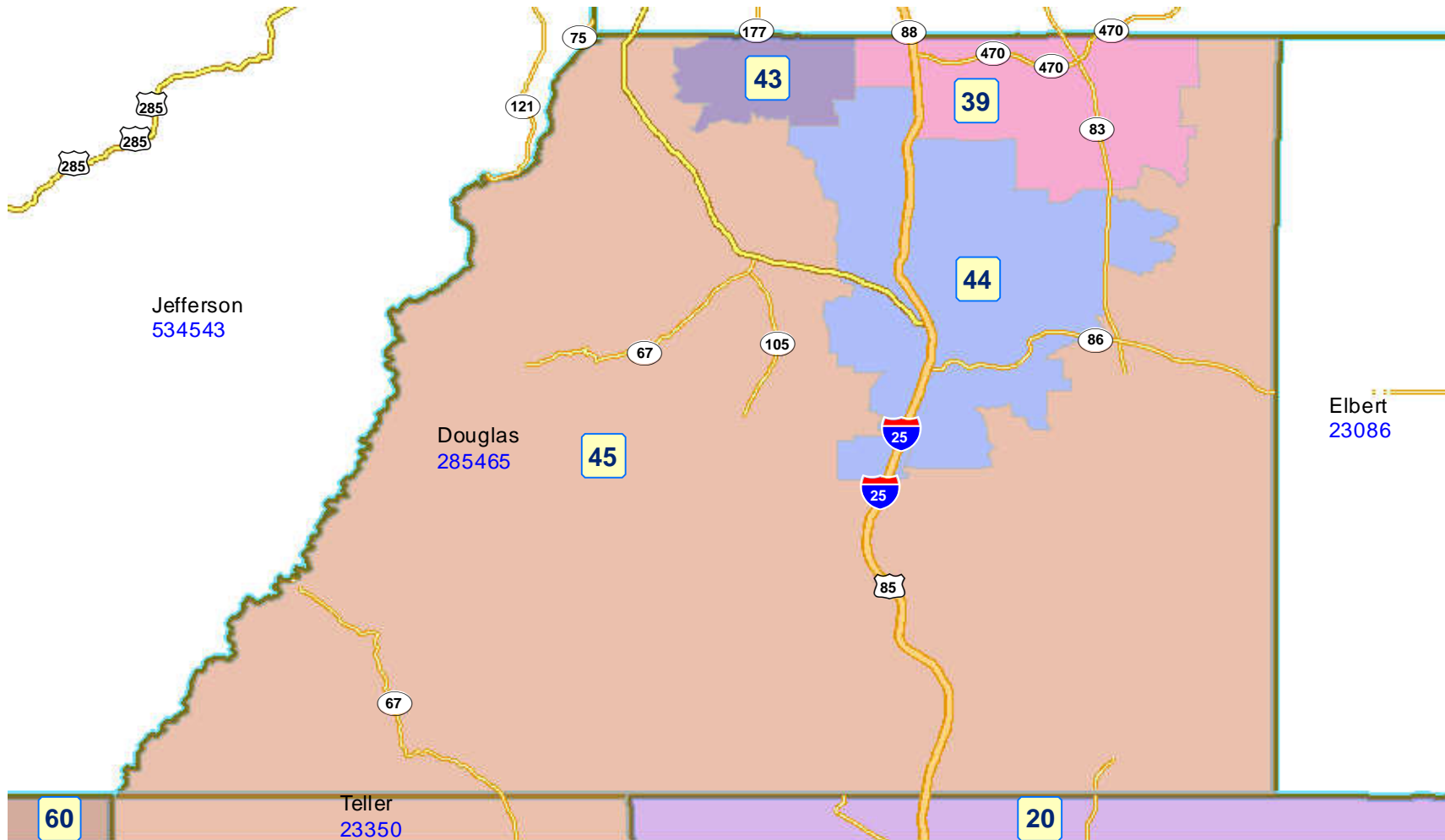


2011 Colorado Reapportionment Commission  
1313 Sherman Street  
Room 122  
Denver, Colorado 80203

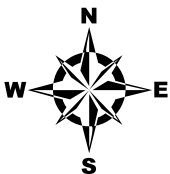


# House Region Four Plan - H4001v1

## Douglas County Zoom

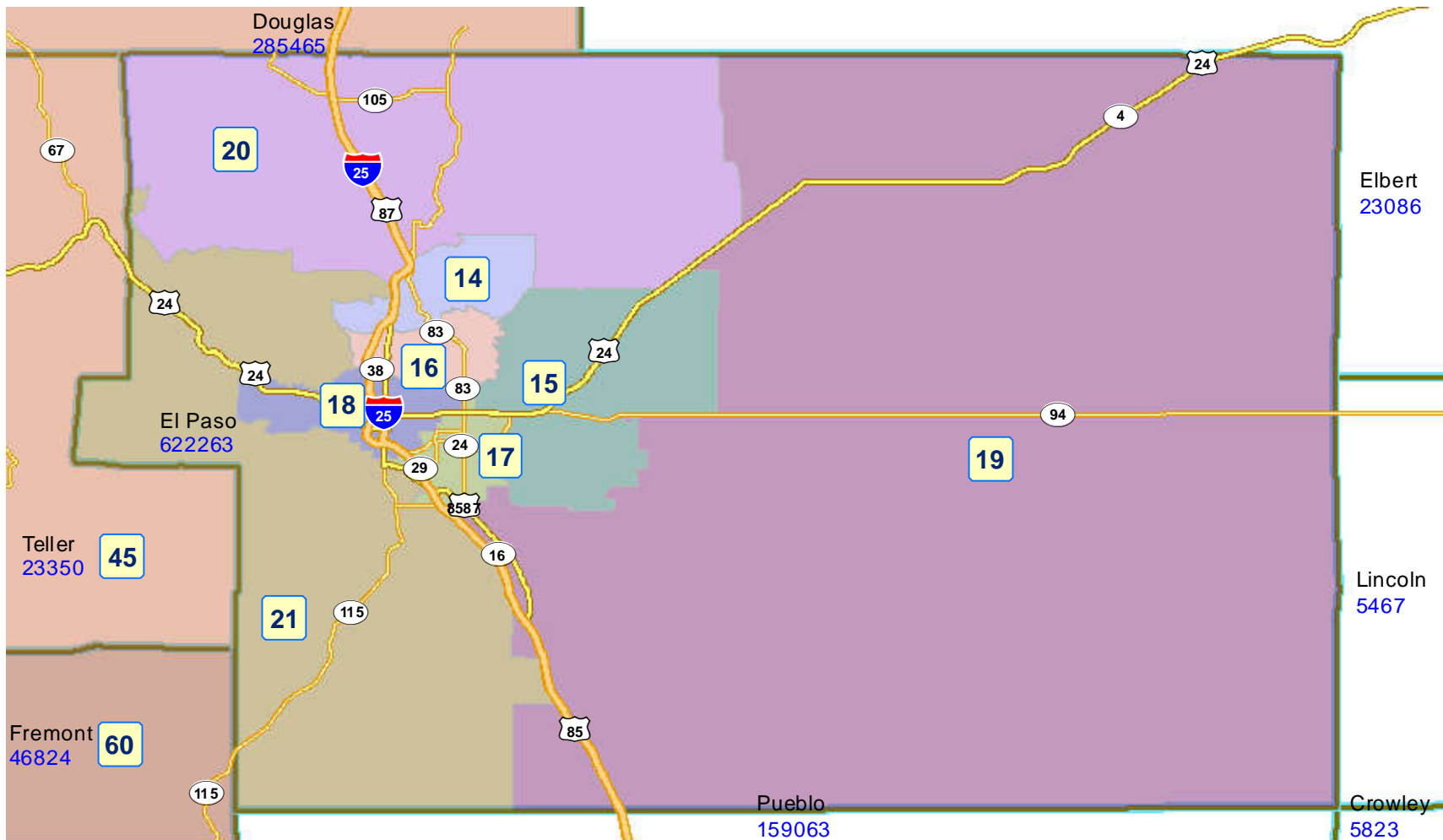


2011 Colorado Reapportionment Commission  
1313 Sherman Street  
Room 122  
Denver, Colorado 80203



# House Region Four Plan - H4001v1

## El Paso County Zoom

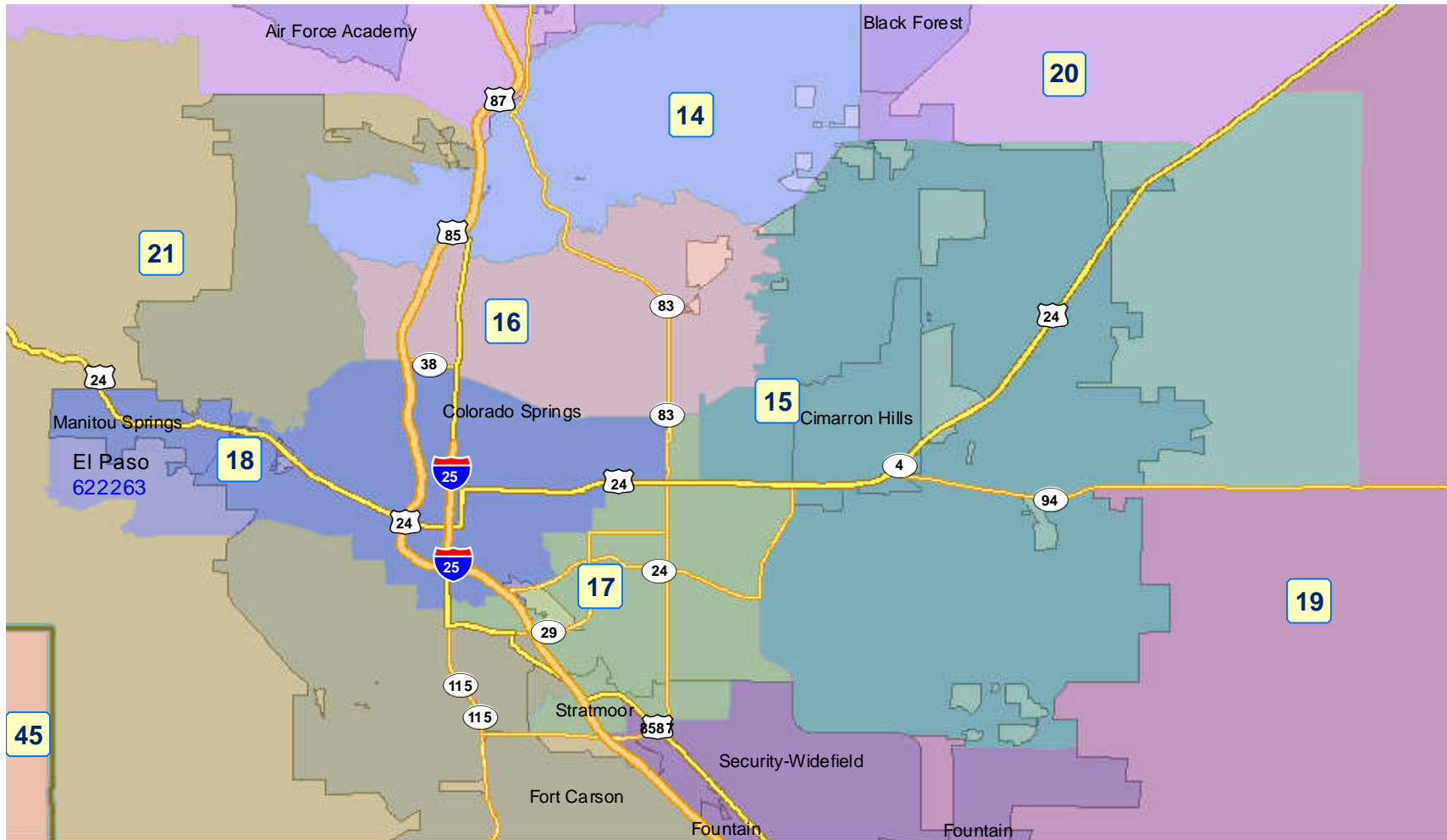


2011 Colorado Reapportionment Commission  
1313 Sherman Street  
Room 122  
Denver, Colorado 80203



# House Region Four Plan - H4001v1

## Colorado Springs Zoom



2011 Colorado Reapportionment Commission  
1313 Sherman Street  
Room 122  
Denver, Colorado 80203



# Population Summary

Plan Name: Workspace: House>>H4001v1

Plan was last edited on: 6/23/2011 2:19:05 PM

State of Colorado

6/23/2011

3:27 pm

District	Population	Ideal District	Deviation	%Deviation
14	79,283	77,372	1,911	2.47
15	76,203	77,372	-1,169	-1.51
16	78,496	77,372	1,124	1.45
17	78,770	77,372	1,398	1.81
18	75,548	77,372	-1,824	-2.36
19	78,971	77,372	1,599	2.07
20	79,263	77,372	1,891	2.44
21	75,729	77,372	-1,643	-2.12
39	79,041	77,372	1,669	2.16
43	75,648	77,372	-1,724	-2.23
44	78,325	77,372	953	1.23
45	75,801	77,372	-1,571	-2.03
60	76,651	77,372	-721	-0.93

Mean Deviation in persons is: 1,532.15 \*

Mean Deviation as a percent of ideal population is: 1.98 \*

District with the largest population deviation is district: 14 with a population of: 79,283 The set ideal population is: 77,372  
 This district is 1,911 Persons OVER its set ideal population. Percent Deviation: 2.47%

District with the largest population is district: 14 with a population of: 79,283 The set ideal population is: 77,372  
 This district is 1,911 Persons OVER its set ideal population. Percent Deviation: 2.47%

District with the smallest population is district: 0 with a population of: 0 The set ideal population is: 0  
 This district is 0 Persons UNDER its set ideal population. Percent Deviation: 0.00%

Plan range (which is calculated between the district with the largest and the district with the smallest population) is as follows:

1,911 Persons, which is 2.47% of the ideal set population for the district with the largest population.

\* Only absolute values are considered

# Ethnic Summary

Plan Name: Workspace: House>>H4001v1

Plan Last Edited on: 6/23/2011 2:19:05 PM

Thursday, June 23, 2011

3:26 pm

<u>District</u>	<u>Population</u>	<u>NH White</u>	<u>Hispanic</u>	<u>DOJ NH Black</u>	<u>DOJ NH Ind</u>	<u>DOJ NH Asn</u>	<u>DOJ NH Hwn</u>	<u>DOJ NH Other</u>	<u>Total Minority</u>
<b>14</b>	79,283	62,719 <i>79.11%</i>	7,614 <i>9.60%</i>	3,646 <i>4.60%</i>	836 <i>1.05%</i>	4,042 <i>5.10%</i>	226 <i>0.29%</i>	200 <i>0.25%</i>	16,564 <i>20.89%</i>
<b>15</b>	76,203	53,689 <i>70.46%</i>	11,206 <i>14.71%</i>	6,052 <i>7.94%</i>	909 <i>1.19%</i>	3,795 <i>4.98%</i>	349 <i>0.46%</i>	203 <i>0.27%</i>	22,514 <i>29.54%</i>
<b>16</b>	78,496	59,413 <i>75.69%</i>	10,890 <i>13.87%</i>	4,341 <i>5.53%</i>	1,055 <i>1.34%</i>	2,393 <i>3.05%</i>	208 <i>0.26%</i>	196 <i>0.25%</i>	19,083 <i>24.31%</i>
<b>17</b>	78,770	34,471 <i>43.76%</i>	26,818 <i>34.05%</i>	12,819 <i>16.27%</i>	1,251 <i>1.59%</i>	2,727 <i>3.46%</i>	487 <i>0.62%</i>	197 <i>0.25%</i>	44,299 <i>56.24%</i>
<b>18</b>	75,548	56,838 <i>75.23%</i>	11,232 <i>14.87%</i>	4,255 <i>5.63%</i>	1,211 <i>1.60%</i>	1,656 <i>2.19%</i>	176 <i>0.23%</i>	180 <i>0.24%</i>	18,710 <i>24.77%</i>
<b>19</b>	78,971	53,977 <i>68.35%</i>	12,921 <i>16.36%</i>	7,457 <i>9.44%</i>	1,310 <i>1.66%</i>	2,546 <i>3.22%</i>	597 <i>0.76%</i>	163 <i>0.21%</i>	24,994 <i>31.65%</i>
<b>20</b>	79,263	67,318 <i>84.93%</i>	5,526 <i>6.97%</i>	2,200 <i>2.78%</i>	814 <i>1.03%</i>	3,081 <i>3.89%</i>	147 <i>0.19%</i>	177 <i>0.22%</i>	11,945 <i>15.07%</i>
<b>21</b>	75,729	59,522 <i>78.60%</i>	7,458 <i>9.85%</i>	4,298 <i>5.68%</i>	881 <i>1.16%</i>	2,992 <i>3.95%</i>	411 <i>0.54%</i>	167 <i>0.22%</i>	16,207 <i>21.40%</i>
<b>39</b>	79,041	66,246 <i>83.81%</i>	6,415 <i>8.12%</i>	1,625 <i>2.06%</i>	489 <i>0.62%</i>	4,046 <i>5.12%</i>	112 <i>0.14%</i>	108 <i>0.14%</i>	12,795 <i>16.19%</i>
<b>43</b>	75,648	62,990 <i>83.27%</i>	5,475 <i>7.24%</i>	1,270 <i>1.68%</i>	457 <i>0.60%</i>	5,251 <i>6.94%</i>	79 <i>0.10%</i>	126 <i>0.17%</i>	12,658 <i>16.73%</i>
<b>44</b>	78,325	67,582 <i>86.28%</i>	6,292 <i>8.03%</i>	1,260 <i>1.61%</i>	557 <i>0.71%</i>	2,360 <i>3.01%</i>	114 <i>0.15%</i>	160 <i>0.20%</i>	10,743 <i>13.72%</i>

Target Population 77,372

State of Colorado

<u>District</u>	<u>Population</u>	<u>NH White</u>	<u>Hispanic</u>	<u>DOJ NH Black</u>	<u>DOJ NH Ind</u>	<u>DOJ NH Asn</u>	<u>DOJ NH Hwn</u>	<u>DOJ NH Other</u>	<u>Total Minority</u>
<b>45</b>	75,801	67,627 <b>89.22%</b>	4,504 <b>5.94%</b>	715 <b>0.94%</b>	774 <b>1.02%</b>	1,980 <b>2.61%</b>	72 <b>0.09%</b>	129 <b>0.17%</b>	8,174 <b>10.78%</b>
<b>60</b>	76,651	64,090 <b>83.61%</b>	8,019 <b>10.46%</b>	2,296 <b>3.00%</b>	1,490 <b>1.94%</b>	640 <b>0.83%</b>	38 <b>0.05%</b>	78 <b>0.10%</b>	12,561 <b>16.39%</b>

Target Population

77,372

# Plan Components Report

6/23/2011

Plan Name: Workspace: House>>H4001v1

Plan Last Edited on: 6/23/2011 2:19:05 PM

Total Population	Voting Age Population
---------------------	--------------------------

## District: 14

### 1 Cities

Colorado Springs( Census Places) |041 in El Paso County

416,427

312,291

### 1 Counties

El Paso County

622,263

459,587

**Total for District 14**

**1,038,690**

**771,878**

## District: 15

### 1 Cities

Colorado Springs( Census Places) |041 in El Paso County

416,427

312,291

### 1 Counties

El Paso County

622,263

459,587

**Total for District 15**

**1,038,690**

**771,878**

## District: 16

### 1 Cities

Colorado Springs( Census Places) |041 in El Paso County

416,427

312,291

### 1 Counties

El Paso County

622,263

459,587

**Total for District 16**

**1,038,690**

**771,878**

## District: 17

### 3 Cities

Colorado Springs( Census Places) |041 in El Paso County

416,427

312,291

Stratmoor( Census Places) |041 in El Paso County

6,900

5,125

Security-Widefield( Census Places) |041 in El Paso County

32,882

23,422

### 1 Counties

El Paso County

622,263

459,587

**Total for District 17**

**1,078,472**

**800,425**

## District: 18

### 1 Cities

Colorado Springs( Census Places) |041 in El Paso County

416,427

312,291

### 1 Counties

El Paso County

622,263

459,587

**Total for District 18**

**1,038,690**

**771,878**

## District: 19

### 5 Cities

Black Forest( Census Places) |041 in El Paso County

13,116

9,809

Security-Widefield( Census Places) |041 in El Paso County

32,882

23,422

Stratmoor( Census Places) |041 in El Paso County

6,900

5,125

Colorado Springs( Census Places) |041 in El Paso County

416,427

312,291

Fountain( Census Places) |041 in El Paso County

25,846

17,130



**1 Counties**

El Paso County	622,263	459,587
<b>Total for District 19</b>	<b>1,117,434</b>	<b>827,364</b>

**District: 20**

**3 Cities**

Colorado Springs( Census Places)  041 in El Paso County	416,427	312,291
Cascade-Chipita Park( Census Places)  041 in El Paso County	1,655	1,319
Black Forest( Census Places)  041 in El Paso County	13,116	9,809

**1 Counties**

El Paso County	622,263	459,587
<b>Total for District 20</b>	<b>1,053,461</b>	<b>783,006</b>

**District: 21**

**5 Cities**

Fountain( Census Places)  041 in El Paso County	25,846	17,130
Colorado Springs( Census Places)  041 in El Paso County	416,427	312,291
Stratmoor( Census Places)  041 in El Paso County	6,900	5,125
Cascade-Chipita Park( Census Places)  041 in El Paso County	1,655	1,319
Green Mountain Falls( Census Places)  041 in El Paso County	640	509

**1 Counties**

El Paso County	622,263	459,587
<b>Total for District 21</b>	<b>1,073,731</b>	<b>795,961</b>

**District: 39**

**4 Cities**

Aurora( Census Places)  005 in Arapahoe County	325,078	236,243
Parker( Census Places)  035 in Douglas County	45,297	30,388
Lone Tree( Census Places)  035 in Douglas County	10,218	7,497
Acres Green( Census Places)  035 in Douglas County	3,007	2,200

**1 Counties**

Douglas County	285,465	198,453
<b>Total for District 39</b>	<b>669,065</b>	<b>474,781</b>

**District: 43**

**3 Cities**

Acres Green( Census Places)  035 in Douglas County	3,007	2,200
Lone Tree( Census Places)  035 in Douglas County	10,218	7,497
Highlands Ranch( Census Places)  035 in Douglas County	96,713	65,792

**1 Counties**

Douglas County	285,465	198,453
<b>Total for District 43</b>	<b>395,403</b>	<b>273,942</b>

**District: 44**

**4 Cities**

Highlands Ranch( Census Places)  035 in Douglas County	96,713	65,792
The Pinery( Census Places)  035 in Douglas County	10,517	7,432
Lone Tree( Census Places)  035 in Douglas County	10,218	7,497

	Total Population	Voting Age Population
Parker( Census Places)  035 in Douglas County	45,297	30,388
<b>1 Counties</b>		
Douglas County	285,465	198,453
<b>Total for District 44</b>	<b>448,210</b>	<b>309,562</b>
<b>District: 45</b>		
<b>6 Cities</b>		
Aurora( Census Places)  005 in Arapahoe County	325,078	236,243
Littleton( Census Places)  005 in Arapahoe County	41,737	32,731
Parker( Census Places)  035 in Douglas County	45,297	30,388
The Pinery( Census Places)  035 in Douglas County	10,517	7,432
Highlands Ranch( Census Places)  035 in Douglas County	96,713	65,792
Green Mountain Falls( Census Places)  041 in El Paso County	640	509
<b>1 Counties</b>		
Douglas County	285,465	198,453
<b>Total for District 45</b>	<b>805,447</b>	<b>571,548</b>
<b>District: 60</b>		
<b>1 Counties</b>		
Park County	16,206	13,098
<b>Total for District 60</b>	<b>16,206</b>	<b>13,098</b>

**Please Note:** Report Totals are not provided as a district split are reported for each neighboring district. As such the same geography may be represented for several districts. For example if County "A" is split between districts 1, 3 and 5, it is reported as a split for each district.

# Measures of Compactness

Plan name: Workspace: House>>H4001v1

6/23/2011

Plan was last edited on: 6/23/2011 2:19:05 PM

3:27:00PM

District	Roeck	Schwartzberg	Area	Perimeter
14	0.21	0.79	27.8	33.1
15	0.36	0.86	97.7	52.7
16	0.28	0.82	21.1	28.8
17	0.37	0.69	17.9	27.7
18	0.20	0.78	29.4	34.7
19	0.38	0.89	1,299.4	168.7
20	0.27	0.92	300.9	84.2
21	0.22	0.68	335.4	130.6
39	0.26	0.85	48.1	35.8
43	0.34	0.88	17.4	21.6
44	0.43	0.76	99.8	81.4
45	0.24	0.68	1,236.6	282.3
60	0.33	0.82	4,677.8	374.3

## Report Summary

Total Perimeter for all Districts	5,423.36 Miles	Average	104.30 Miles
Total Area for all Districts	32,836.55 Square Miles	Average	631.47 Square Miles
Minimum Compactness based on Roeck	0.00		
Maximum Compactness based on Roeck	0.43	Roeck Average	0.29 Std. Dev. 0.07
Minimum Compactness based on Schwartzberg	0.92		
Maximum Compactness based on Schwartzberg	0.68	Schwartzberg Average	0.80 Std. Dev. 0.08

# District Registration

2008 & 2010 Political Party Registrations

Plan Name: Workspace: House>>H4001v1

Plan Last Edited on: 6/23/2011 2:19:05 PM

Thursday, June 23, 2011

3:27 pm

<u>District</u>	<u>REG VT 08 D</u>	<u>REG VT 08 R</u>	<u>REG VT 08 MP</u>	<u>REG VT 08 U</u>	<u>REG VTR 10 D</u>	<u>REG VTR 10 R</u>	<u>REG VTR 10 MP</u>	<u>REG VTR 10 U</u>
<b>14</b>	7,858 <i>18.14 %</i>	23,237 <i>53.64 %</i>	205 <i>0.47 %</i>	12,020 <i>27.75 %</i>	7,444 <i>17.44 %</i>	22,698 <i>53.17 %</i>	205 <i>0.48 %</i>	12,342 <i>28.91 %</i>
<b>15</b>	7,270 <i>21.05 %</i>	16,877 <i>48.88 %</i>	158 <i>0.46 %</i>	10,224 <i>29.61 %</i>	6,726 <i>19.86 %</i>	16,629 <i>49.11 %</i>	213 <i>0.63 %</i>	10,293 <i>30.40 %</i>
<b>16</b>	9,919 <i>23.12 %</i>	20,042 <i>46.72 %</i>	220 <i>0.51 %</i>	12,719 <i>29.65 %</i>	8,948 <i>21.94 %</i>	19,302 <i>47.34 %</i>	259 <i>0.64 %</i>	12,266 <i>30.08 %</i>
<b>17</b>	9,116 <i>36.35 %</i>	7,308 <i>29.14 %</i>	180 <i>0.72 %</i>	8,472 <i>33.79 %</i>	7,920 <i>34.99 %</i>	6,972 <i>30.80 %</i>	170 <i>0.75 %</i>	7,573 <i>33.46 %</i>
<b>18</b>	14,103 <i>34.56 %</i>	12,521 <i>30.68 %</i>	397 <i>0.97 %</i>	13,792 <i>33.79 %</i>	12,301 <i>33.31 %</i>	11,778 <i>31.89 %</i>	372 <i>1.01 %</i>	12,479 <i>33.79 %</i>
<b>19</b>	8,119 <i>24.85 %</i>	14,221 <i>43.52 %</i>	147 <i>0.45 %</i>	10,191 <i>31.19 %</i>	7,745 <i>23.76 %</i>	14,355 <i>44.03 %</i>	176 <i>0.54 %</i>	10,326 <i>31.67 %</i>
<b>20</b>	6,011 <i>13.91 %</i>	25,865 <i>59.87 %</i>	153 <i>0.35 %</i>	11,174 <i>25.86 %</i>	5,920 <i>13.47 %</i>	26,087 <i>59.36 %</i>	200 <i>0.46 %</i>	11,737 <i>26.71 %</i>
<b>21</b>	8,465 <i>22.19 %</i>	18,975 <i>49.75 %</i>	200 <i>0.52 %</i>	10,502 <i>27.53 %</i>	7,810 <i>21.35 %</i>	18,431 <i>50.39 %</i>	211 <i>0.58 %</i>	10,125 <i>27.68 %</i>
<b>39</b>	9,674 <i>23.35 %</i>	19,079 <i>46.05 %</i>	171 <i>0.41 %</i>	12,507 <i>30.19 %</i>	8,793 <i>21.67 %</i>	19,009 <i>46.84 %</i>	232 <i>0.57 %</i>	12,546 <i>30.92 %</i>
<b>43</b>								

Target Population

77,372

State of Colorado

<u>District</u>	<u>REG VT 08 D</u>	<u>REG VT 08 R</u>	<u>REG VT 08 MP</u>	<u>REG VT 08 U</u>	<u>REG VTR 10 D</u>	<u>REG VTR 10 R</u>	<u>REG VTR 10 MP</u>	<u>REG VTR 10 U</u>
<b>44</b>	10,516	19,739	138	12,103	9,979	19,650	184	12,271
	<b>24.75 %</b>	<b>46.45 %</b>	<b>0.32 %</b>	<b>28.48 %</b>	<b>23.71 %</b>	<b>46.69 %</b>	<b>0.44 %</b>	<b>29.16 %</b>
<b>45</b>	8,773	22,136	165	12,162	8,387	22,528	239	13,001
	<b>20.29 %</b>	<b>51.20 %</b>	<b>0.38 %</b>	<b>28.13 %</b>	<b>18.99 %</b>	<b>51.02 %</b>	<b>0.54 %</b>	<b>29.44 %</b>
<b>60</b>	9,431	22,839	197	13,261	9,018	23,253	292	13,064
	<b>20.62 %</b>	<b>49.95 %</b>	<b>0.43 %</b>	<b>29.00 %</b>	<b>19.76 %</b>	<b>50.96 %</b>	<b>0.64 %</b>	<b>28.63 %</b>
	11,369	18,649	282	13,440	9,858	17,286	309	11,243
	<b>25.99 %</b>	<b>42.64 %</b>	<b>0.64 %</b>	<b>30.73 %</b>	<b>25.48 %</b>	<b>44.67 %</b>	<b>0.80 %</b>	<b>29.05 %</b>

# Political Summary - US Senate

2008 & 2010 General Election Results for Select Races & Voting Age Population

Plan Name: Workspace: House>>H4001v1

Plan Last Edited on: 6/23/2011 2:19:05 PM

Friday, June 24, 2011

9:34 am

<u>District</u>	<u>US SEN 08 D</u>	<u>US SEN 08 R</u>	<u>US SEN 08 MP</u>	<u>US SEN 10 D</u>	<u>US SEN 10 R</u>	<u>US SEN 10 MP</u>	<u>18 + Pop</u>
<b>14</b>	12,438 <i>32.03%</i>	25,044 <i>64.49%</i>	1,354 <i>3.49%</i>	8,326 <i>28.87%</i>	19,238 <i>66.70%</i>	1,280 <i>4.44%</i>	56,726
<b>15</b>	10,375 <i>34.47%</i>	18,164 <i>60.35%</i>	1,561 <i>5.19%</i>	6,158 <i>29.70%</i>	13,260 <i>63.95%</i>	1,318 <i>6.36%</i>	53,426
<b>16</b>	14,413 <i>37.97%</i>	21,696 <i>57.16%</i>	1,850 <i>4.87%</i>	9,777 <i>33.89%</i>	17,337 <i>60.09%</i>	1,736 <i>6.02%</i>	61,417
<b>17</b>	10,281 <i>52.28%</i>	7,735 <i>39.33%</i>	1,650 <i>8.39%</i>	5,578 <i>46.48%</i>	5,371 <i>44.76%</i>	1,051 <i>8.76%</i>	55,828
<b>18</b>	19,364 <i>56.48%</i>	12,892 <i>37.61%</i>	2,026 <i>5.91%</i>	12,824 <i>52.68%</i>	9,947 <i>40.87%</i>	1,570 <i>6.45%</i>	62,180
<b>19</b>	10,629 <i>37.22%</i>	15,645 <i>54.78%</i>	2,287 <i>8.01%</i>	6,541 <i>32.68%</i>	11,856 <i>59.23%</i>	1,619 <i>8.09%</i>	55,270
<b>20</b>	10,217 <i>25.94%</i>	27,842 <i>70.68%</i>	1,335 <i>3.39%</i>	7,523 <i>23.29%</i>	23,516 <i>72.80%</i>	1,265 <i>3.92%</i>	56,793
<b>21</b>	13,159 <i>38.64%</i>	19,698 <i>57.85%</i>	1,195 <i>3.51%</i>	9,434 <i>35.26%</i>	16,287 <i>60.87%</i>	1,037 <i>3.88%</i>	57,947
<b>39</b>	15,180 <i>40.18%</i>	21,100 <i>55.85%</i>	1,502 <i>3.98%</i>	10,170 <i>35.73%</i>	16,905 <i>59.39%</i>	1,388 <i>4.88%</i>	55,179
<b>43</b>	16,832 <i>42.68%</i>	21,529 <i>54.59%</i>	1,080 <i>2.74%</i>	12,125 <i>39.86%</i>	17,238 <i>56.67%</i>	1,053 <i>3.46%</i>	51,882

**44**

Target Population

77,372

State of Colorado

<u>District</u>	<u>US SEN 08 D</u>	<u>US SEN 08 R</u>	<u>US SEN 08 MP</u>	<u>US SEN 10 D</u>	<u>US SEN 10 R</u>	<u>US SEN 10 MP</u>	<u>18 + Pop</u>
	14,271 <b>35.89%</b>	24,103 <b>60.62%</b>	1,390 <b>3.50%</b>	10,477 <b>32.55%</b>	20,384 <b>63.32%</b>	1,330 <b>4.13%</b>	53,640
<b>45</b>	15,579 <b>36.48%</b>	25,395 <b>59.47%</b>	1,730 <b>4.05%</b>	11,222 <b>32.49%</b>	21,690 <b>62.81%</b>	1,623 <b>4.70%</b>	56,322
<b>60</b>	14,769 <b>41.59%</b>	18,502 <b>52.10%</b>	2,240 <b>6.31%</b>	11,172 <b>37.71%</b>	16,159 <b>54.55%</b>	2,293 <b>7.74%</b>	63,202

# Political Summary - Regent & Treasurer

2008 & 2010 General Election Results for Select Races & Voting Age Population

Plan Name: Workspace: House>>H4001v1

Plan Last Edited on: 6/23/2011 2:19:05 PM

Friday, June 24, 2011

9:33 am

<u>District</u>	<u>TREASURER 10 D</u>	<u>TREASURER 10 R</u>	<u>RGT 10 LG D</u>	<u>RGT 10 LG R</u>	<u>RGT 10 LG MP</u>	<u>18 + Pop</u>
<b>14</b>	8,505 30.46%	19,419 69.54%	7,313 26.94%	18,647 68.70%	1,184 4.36%	56,726
<b>15</b>	6,294 31.26%	13,841 68.74%	5,434 27.65%	13,177 67.06%	1,039 5.29%	53,426
<b>16</b>	10,128 36.32%	17,754 63.68%	8,727 32.11%	17,092 62.88%	1,363 5.01%	61,417
<b>17</b>	5,677 49.02%	5,904 50.98%	5,265 45.77%	5,531 48.08%	708 6.15%	55,828
<b>18</b>	12,727 54.66%	10,556 45.34%	11,323 50.08%	9,941 43.97%	1,347 5.96%	62,180
<b>19</b>	6,793 34.95%	12,642 65.05%	6,029 31.56%	11,876 62.16%	1,200 6.28%	55,270
<b>20</b>	7,692 24.61%	23,568 75.39%	6,553 21.45%	22,676 74.22%	1,324 4.33%	56,793
<b>21</b>	9,324 36.13%	16,481 63.87%	8,110 32.30%	15,946 63.50%	1,055 4.20%	57,947
<b>39</b>	9,769 35.48%	17,768 64.52%	7,922 30.01%	17,025 64.50%	1,447 5.48%	55,179
<b>43</b>	11,366 38.68%	18,022 61.32%	9,441 33.56%	17,523 62.28%	1,170 4.16%	51,882

**44**

Target Population

77,372

State of Colorado



<u>District</u>	<u>TREASURER 10 D</u>	<u>TREASURER 10 R</u>	<u>RGT 10 LG D</u>	<u>RGT 10 LG R</u>	<u>RGT 10 LG MP</u>	<u>18 + Pop</u>
	9,943 <b>31.80%</b>	21,320 <b>68.20%</b>	8,021 <b>26.76%</b>	20,403 <b>68.08%</b>	1,547 <b>5.16%</b>	53,640
<b>45</b>	11,040 <b>32.80%</b>	22,623 <b>67.20%</b>	9,020 <b>27.89%</b>	21,581 <b>66.72%</b>	1,745 <b>5.39%</b>	56,322
<b>60</b>	11,748 <b>40.62%</b>	17,171 <b>59.38%</b>	9,739 <b>35.03%</b>	16,078 <b>57.83%</b>	1,987 <b>7.15%</b>	63,202