



Joint Budget Committee Hearing: Executive Director's Office Services for People with Disabilities

Colorado Department of Human Services
December 23, 2013

Mission, Vision and Values

Mission

The people of Colorado are safe, healthy and are prepared to achieve their greatest aspirations.

Vision

Collaborating with our partners, our mission is to design and deliver high quality human services and health care that improve the safety, independence, and well-being of the people of Colorado.

Values

The Colorado Department of Human Services will:

- Make decisions with and act in the best interests of the people we serve because Colorado's success depends on their well-being.
- Share information, seek input, and explain our actions because we value accountability and transparency.
- Manage our resources efficiently because we value responsible stewardship.
- Promote a positive work environment, and support and develop employees, because their performance is essential to Colorado's success.
- Meaningfully engage our partners and the people we serve because we must work together to achieve the best outcomes.
- Commit to continuous learning because Coloradans deserve effective solutions today and forward-looking innovation for tomorrow.



Colorado Department of Human Services
Reggie Bicha
Executive Director

- Communications Director
- Executive & Legislative Liaison
- Boards & Commissions
- County Services
- Client Services/
Controlled Correspondence

Deputy Executive Director
of Enterprise Partnerships

Deputy Executive Director
of Operations

Office of Performance & Strategic Outcomes

- Administrative Review
- Audits
- Food Stamp Quality Assurance
- Performance Management
- Budget & Policy

Office of Long Term Care

Office of Children, Youth
& Families

Office of Economic
Security

Office of Administrative
Solutions

Office of Early
Childhood

Office of
Behavioral Health

Deputy Director

Deputy Director

Deputy Director

Employment
Affairs

Financial
Services

Early Care &
Learning

Deputy Director
Operations

Deputy Director
Clinical
Services

Deputy Director
Community
Programs

Adult Protection
Services

Veterans
Nursing Homes

Child Welfare

Colorado Works

Child Support
Services

Facilities
Management

Business
Technology

Community &
Family Support

Colorado Mental
Health Institute
at Pueblo

Colorado Mental
Health Institute
at Fort Logan

Regional
Centers

Disability
Determination
Services

Youth
Corrections

Food & Energy
Assistance

Refugee
Services

Developmental
Disabilities

Vocational
Rehab.
Services

2014-15 Strategic Initiatives

- To improve kindergarten readiness through quality early care and learning options for all Coloradans
- **To expand community living options for all people with developmental disabilities**
- To achieve economic security for more Coloradoans through employment
- To ensure child safety through improved prevention, access, and permanency
- To achieve a statewide crisis response system and expand community supports in mental health and substance abuse
- **To prepare Colorado to meet the needs of more seniors who choose to live and thrive in their homes and communities**

FY 2014-15 Budget Requests

Executive Director's Office

- Talent Development and Training
- DHS Long Bill Reorganization

Long Term Care

- Regional Center Capital Outlay
- State Veterans Nursing Homes Resident Security & Support (Capital Request)

Counties and Partners

- 1.5% Community Provider Rate Increase

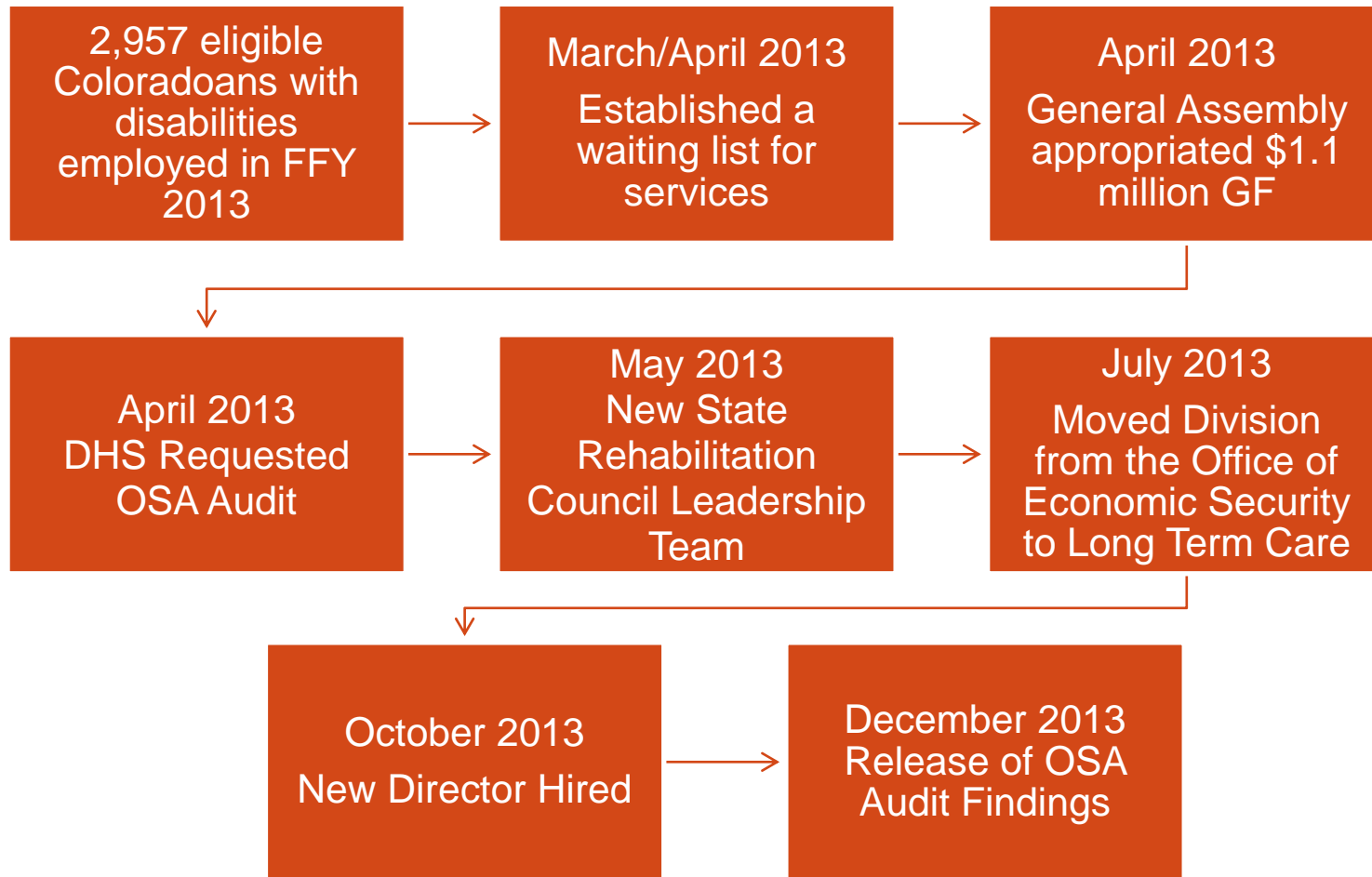


Executive Director's Office



Office of Long Term Care

Vocational Rehabilitation



Audit Findings

- 20 audit findings released December 10
- Themes:
 - Oversight
 - System of controls
 - Culture of accountability
- DHS agreed with all findings
- Full implementation of all findings by December 2014

CDHS Actions

- Relocated the program to the Office of Long Term Care
- Hired a new Division Director
- Reviewed and corrected 6,000 cases as of December 2013, representing 50% of cases
 - Review additional 6,000 cases by July 30, 2014
- Developing new policies and procedures
- Created three new C-Stat measures

Regional Centers - Bobby King

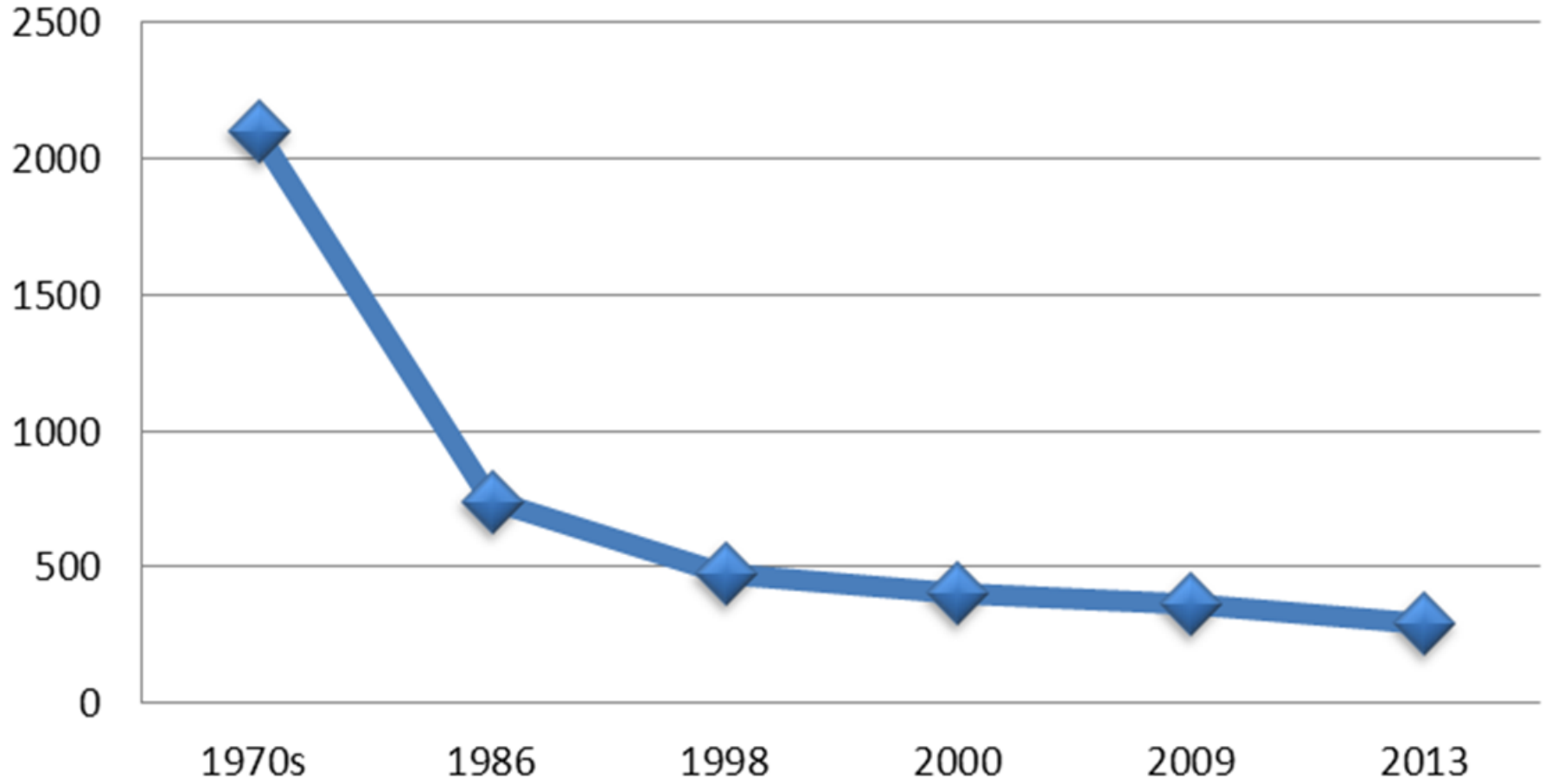
“ I think he’s doing great, just wonderful. He really enjoys it there. He is a people person and he likes the people there.”

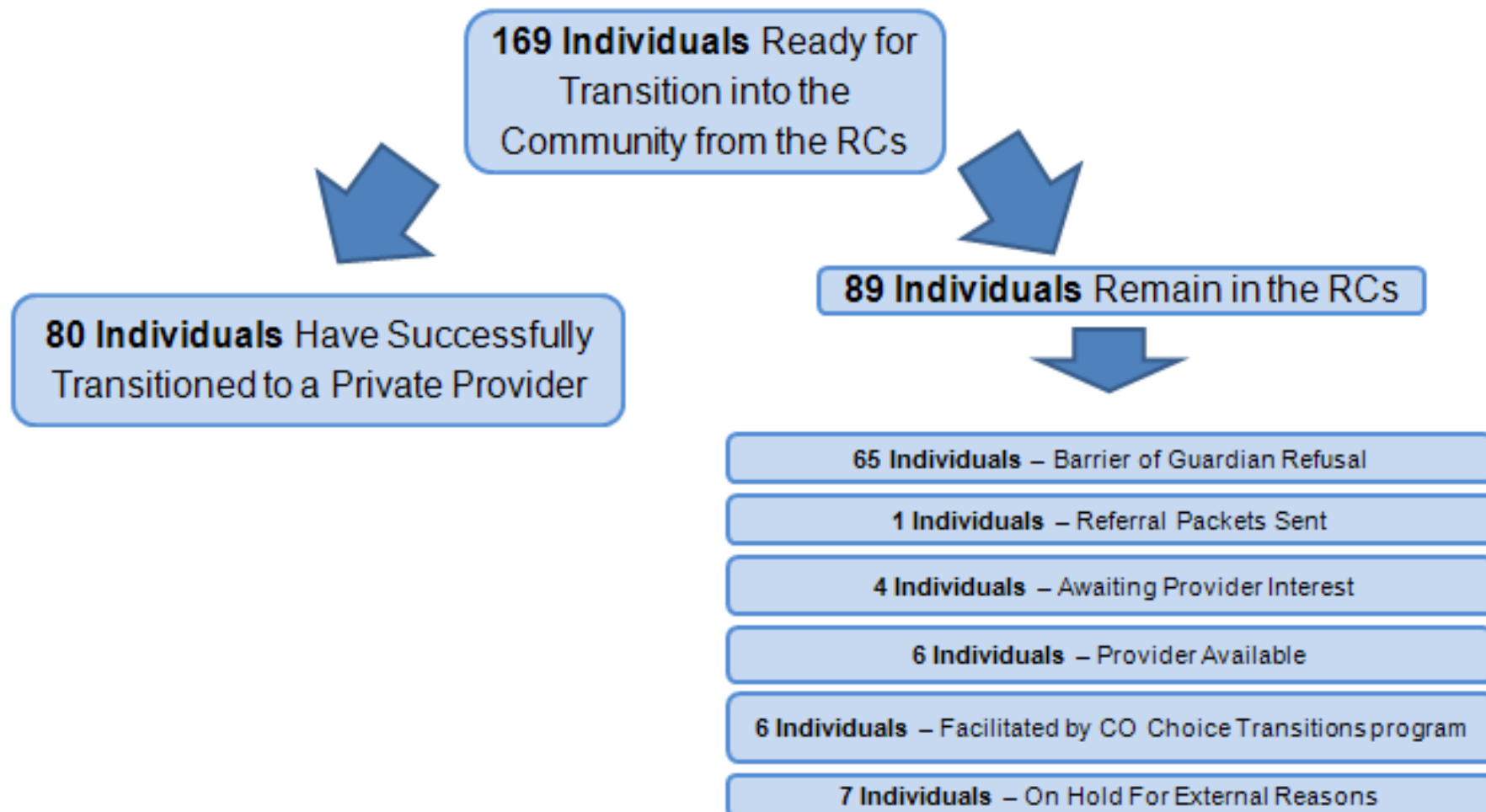
Bobby’s mom, Ruth Weichselbaumer



- 53 years old; 47 of those spent at the Wheat Ridge Regional Center
- Lives at Imagine!
- Bobby enjoys outings with caregivers – wants to go tobogganing
- Got to grow a beard

Historical Population of the Regional Centers





Regional Center Audit

- 11 audit findings released December 9, 2013
- Themes:
 - Common rate methodologies between DHS and HCPF
 - Improve transition readiness assessments, process and performance monitoring related to transitioning of clients to the community
- DHS and HCPF agreed with all findings
- Full implementation of all findings by July 2014

Regional Center Capital Outlay

- 40 group homes
- Homes built between 1980-1982
- Since 1998 \$1.7 million on 33 homes
 - Average of \$2,832 per house per year
 - Improvements included: flooring, countertops, cabinets and roof replacements
- Comprehensive evaluation of the homes and needed repairs

Transition of Youth From Child Welfare to the IDD System

| | Child Welfare System | Developmental Disability System |
|------------------------------------|--|---|
| Provision of services intended to: | <ul style="list-style-type: none">• Strengthen the ability of a family to protect and care for their own children,• minimize harm to children and youth, and• ensure timely permanency | <ul style="list-style-type: none">• Ensure inclusion in the community,• be self directed,• establish and maintain relationships,• develop and exercise competencies and talents, and• experience personal security and self-respect |

Strategies

- Increased funding for the Children's Extensive Support Waiver
- Monitoring individual cases via C-Stat
- Changing policies/practices to refer youth in the child welfare system to the developmental disability system
- TRAILS enhancements
- Strategizing role/responsibilities related to CHRP between HCPF and DHS
- Aligning foster home and host home regulations



Reggie Bicha
Executive Director
Reggie.Bicha@state.co.us
303-866-3475