



Growth and Prevalence of Participant Direction: Findings from the National Survey of Publically Funded Participant-Directed Services Programs

Mark Sciegaj, Ph.D.

Associate Professor of Health Policy & Administration
The Pennsylvania State University

Isaac Selkow

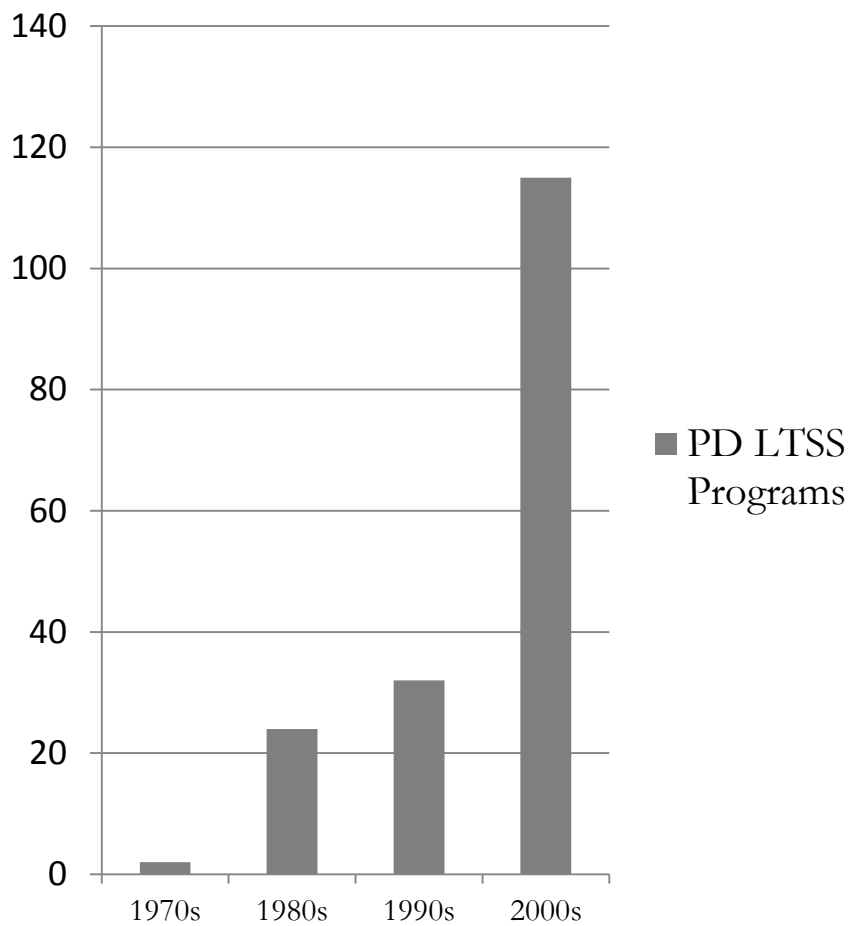
Financial Management Services Research Analyst
NRCPS

Overview: State of PD LTSS in 2010-11

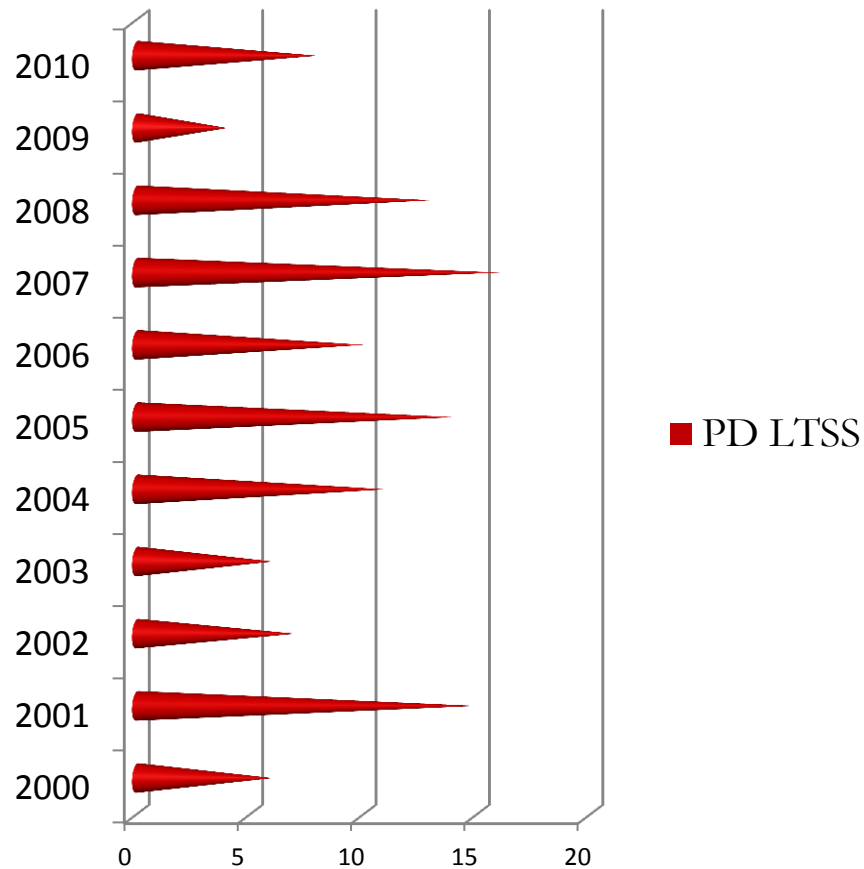
- Program Characteristics and Populations
- Funding Mechanisms
- Participant Direction Models
- VD-HCBS
- FMS Models and Costs

The 2000s: Decade of Significant Growth

New Program Growth

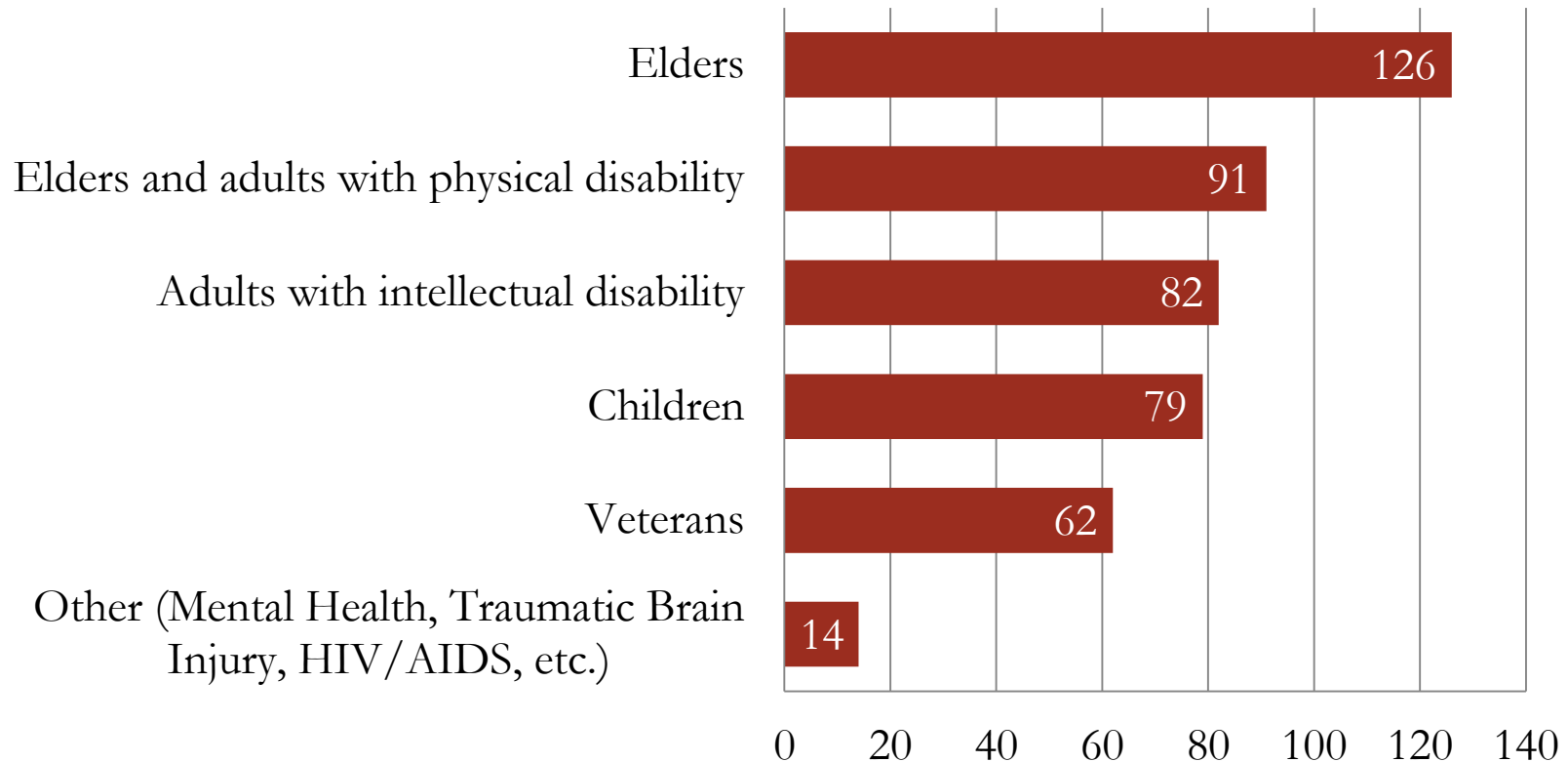


New Program Growth



Program Populations (n=298)

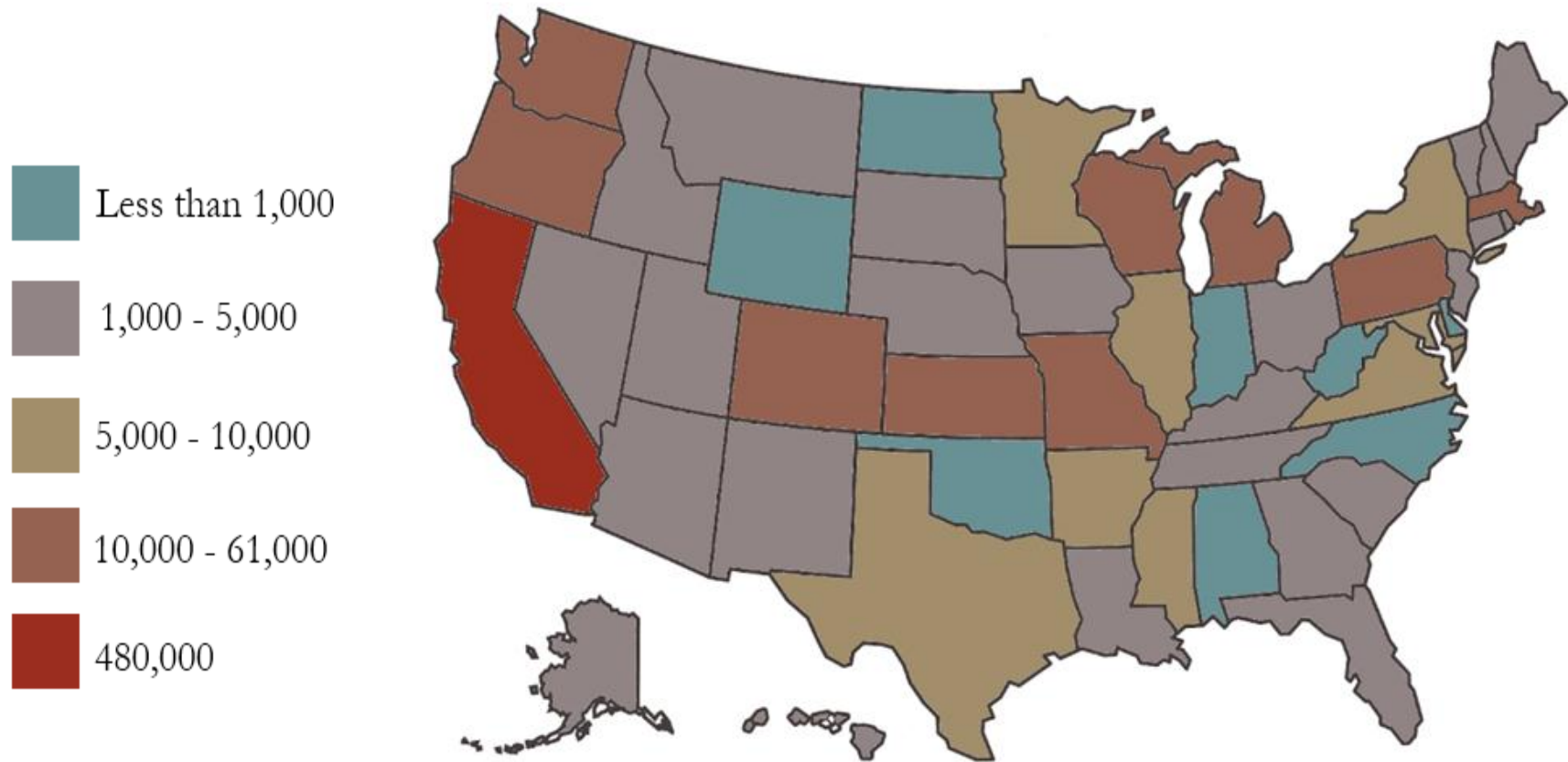
Number of Programs



Program Size (n=298)

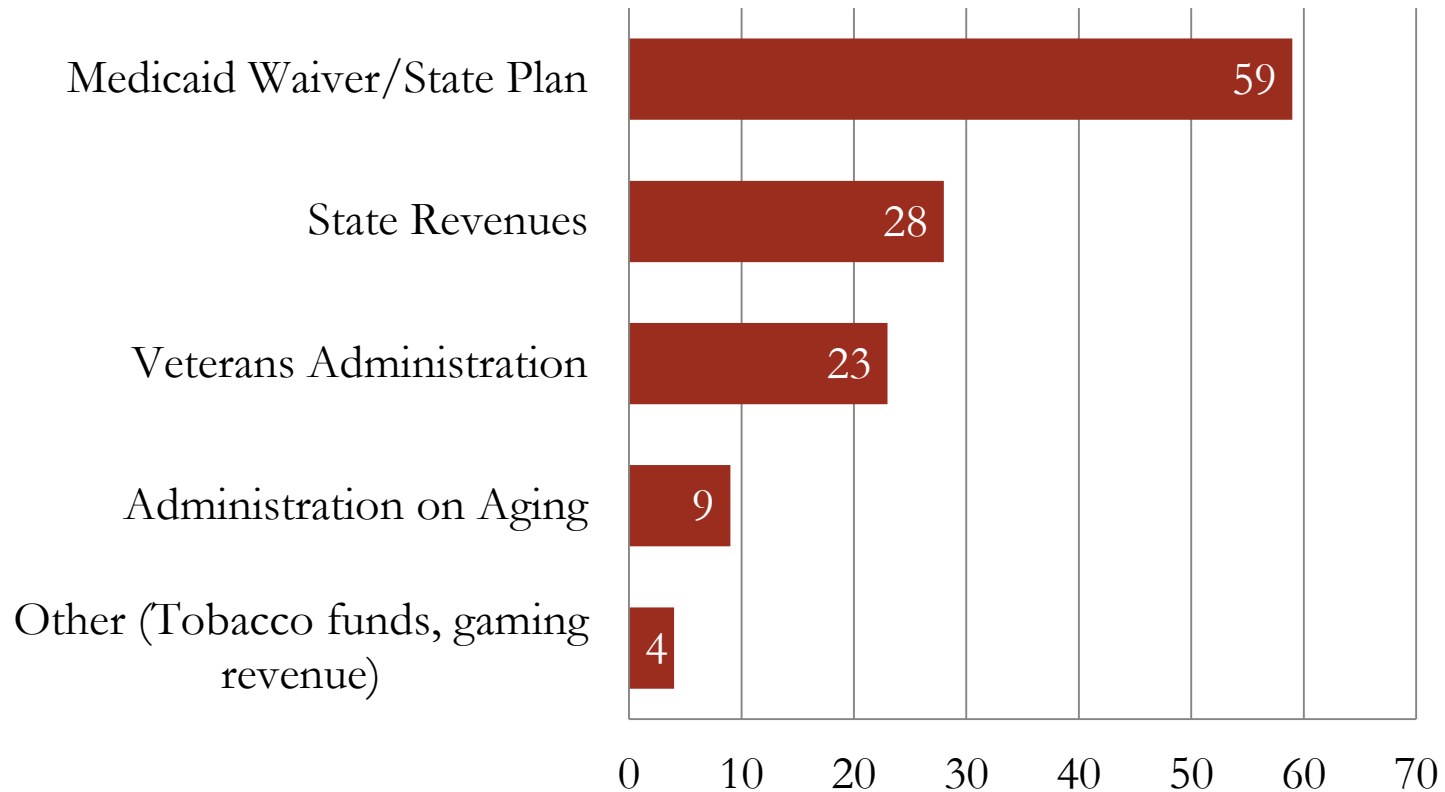
- Total enrollment: Approximately 810,000
 - California accounts for 59% of enrollments
- Average program size (n=287) approximately 2,800 enrollments
 - Majority (72%) of programs have 500 or fewer participants
- Approximate total program costs 2010-11:
8.0 Billion dollars

Majority of States have 1000 – 5000 PD LTSS Participants

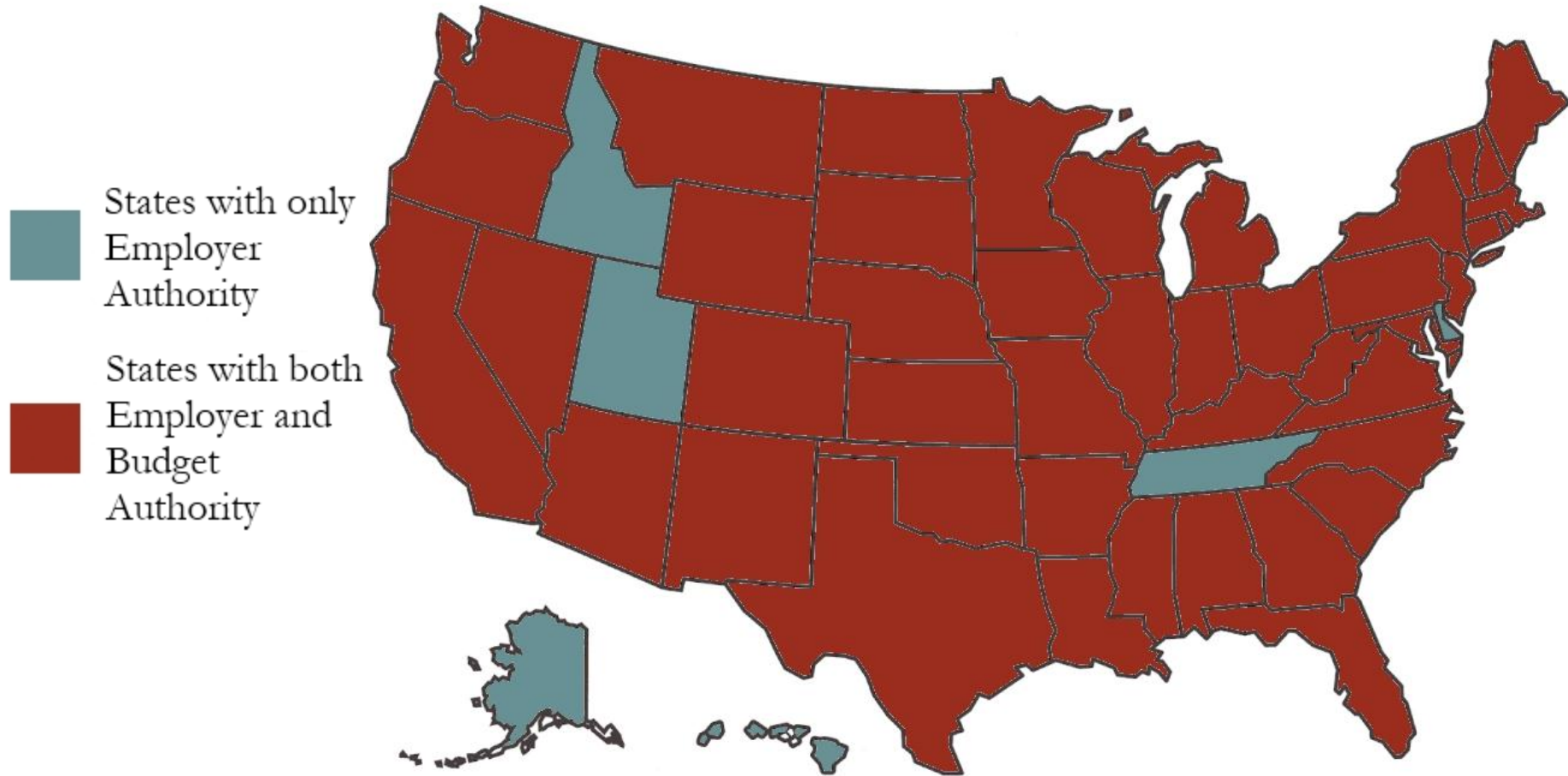


PD-LTSS Funding Sources (n=273)

Funding Source (Percent)



States with Employer and Budget Authority Programs



Employer Authority Characteristics

- Who sets rate of pay (n=186)
 - Participant 54% (n=102)
 - Program 33% (n=60)
 - Other 14% (n=26)
 - Designated pay range
 - General assembly or other entity

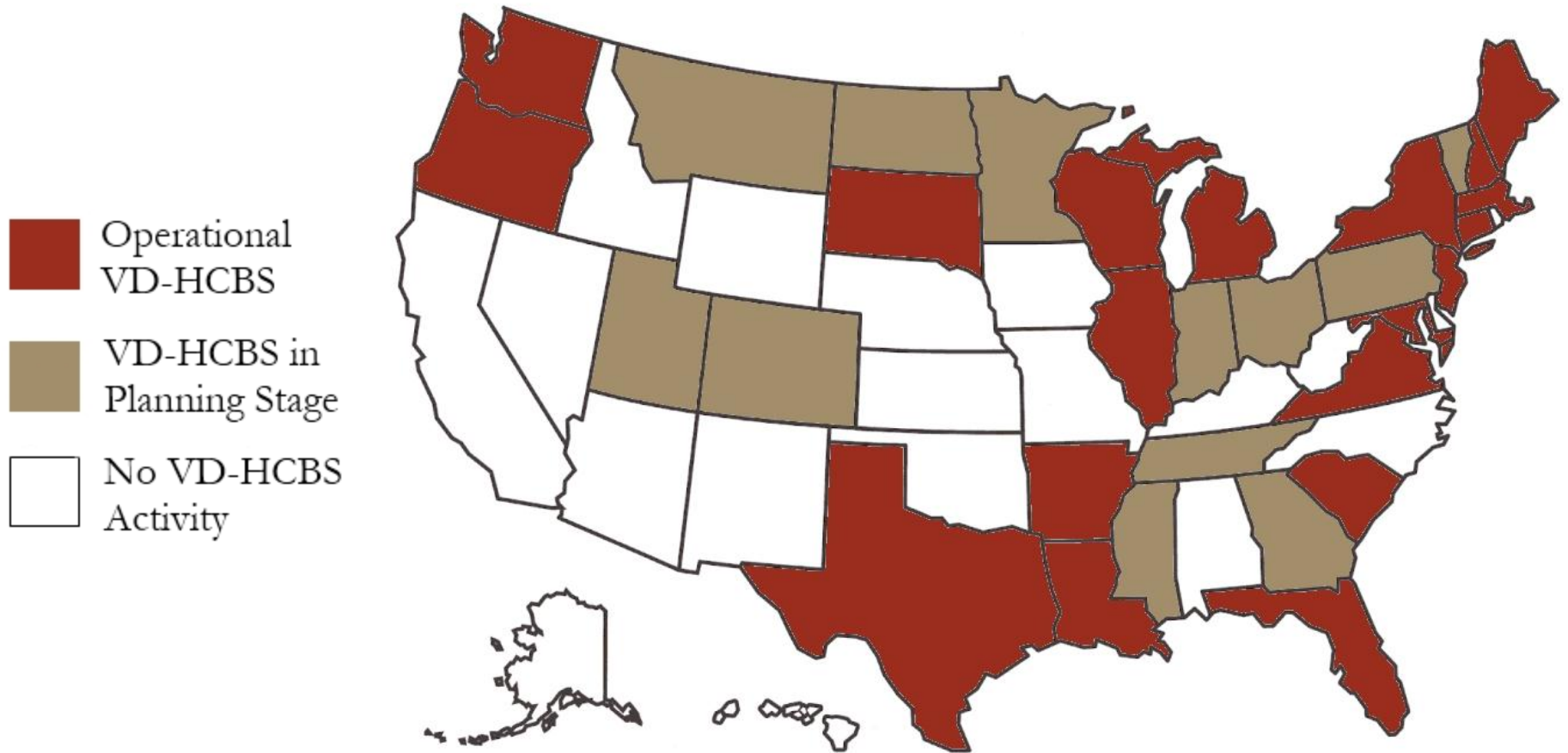
Employer Authority Characteristics

- Are there restrictions on who the participant may hire? (n=171):
 - 92% (n=158): Yes
 - Spouse
 - Legal guardian
 - Pass criminal background check
- Criminal background check required (n=184):
 - 85% (n=158): Yes
- Does the state have a worker registry? (n=170):
 - 31% (n=52): Yes; 66% (n=113): No

Budget Authority Characteristics (n=249)

- The size of the budget is determined by a professional needs assessment and a formula that converts the assessment into a monthly budget allocation
 - Varied
- Purchasing restrictions
 - Cannot exceed approved budget
 - Categorical restrictions
- Can carry forward funds into new fiscal year
 - 89% (n=148): No

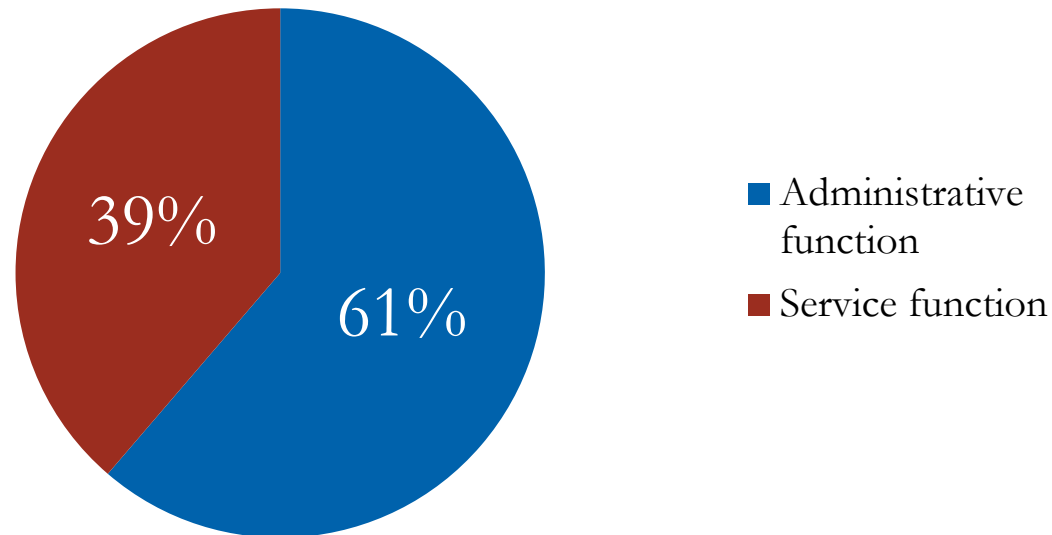
States with VD-HCBS Programs



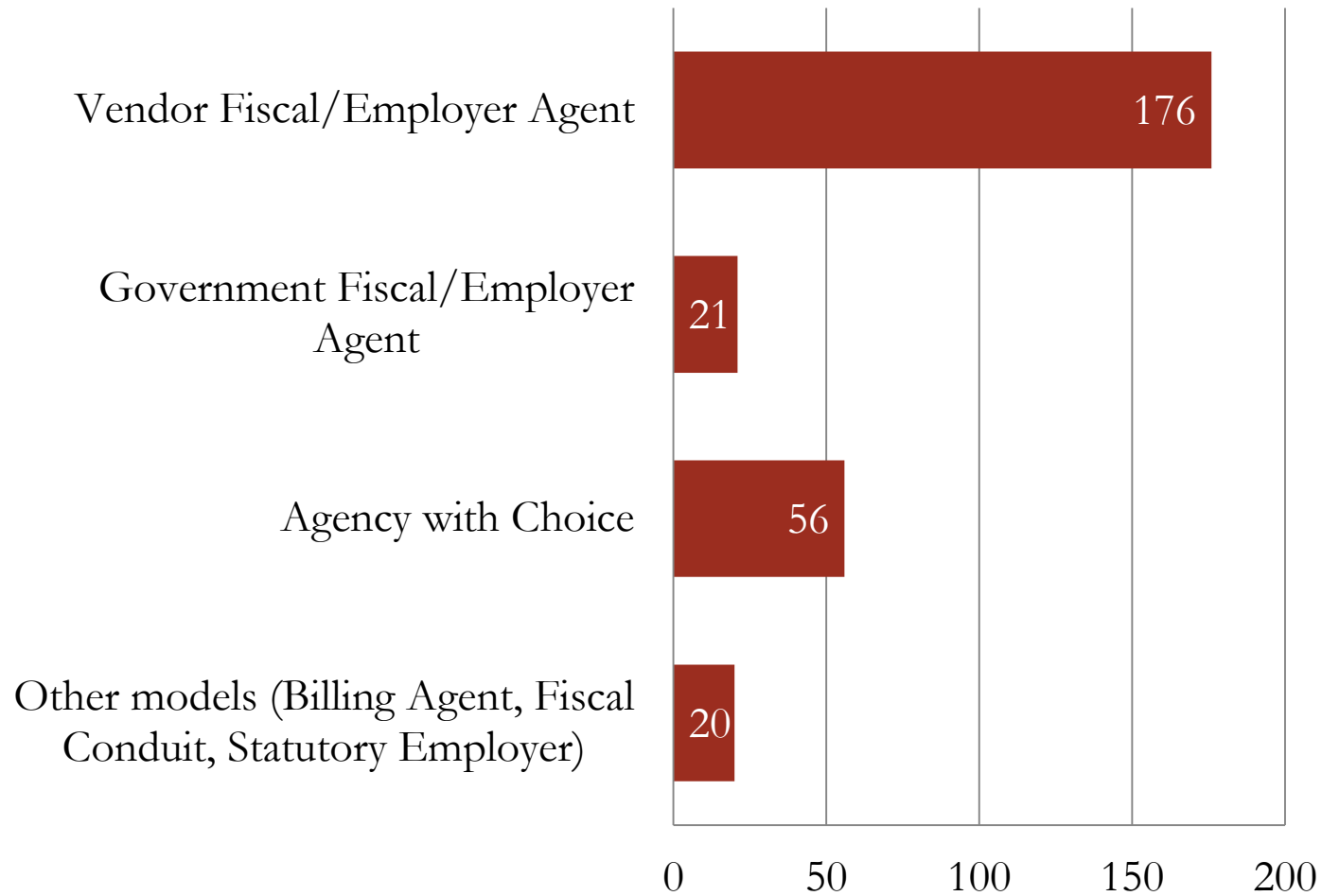
FMS Provider Statistics

- 74% require the use of an FMS provider (n=241)

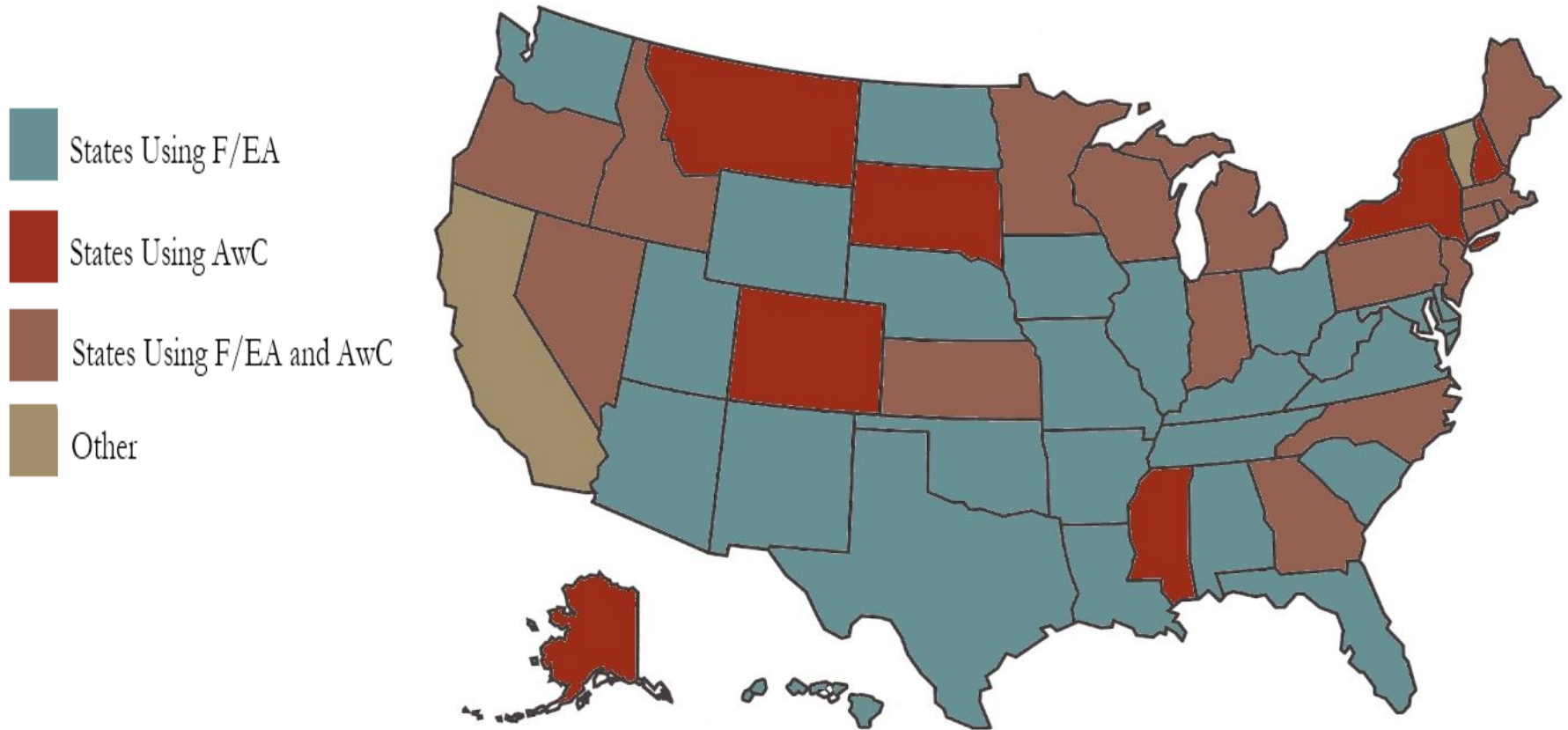
Medicaid Programs (n=127)



FMS Model Statistics (n=247)



Map of FMS Models by state



Average Annual FMS Cost per participant (n=104)

- Mean
 - \$1,129
 - Median
 - \$1,014
 - Minimum
 - \$125
 - Maximum
 - \$3,000
- Fiscal/Employer Agent mean
 - \$1,155 (n=79)
 - Agency with Choice mean
 - \$1,170 (n=17)

Summary

- By the end of 2011 there will be over 300 PD-LTSS programs
 - Majority being developed and implemented since 2000
 - Every state has one employer authority program offering the participant the opportunity to select and hire their own worker
 - 44 states also have at least one program where the participant has control over their service budget
- NRCPDS will continue to collect program information and to analyze this information to learn about differences in PD program structure, financing, and operations across the states.