



ie

**Office of Research and Analysis**  
**Colorado Department of Revenue**  
 (303) 866-3089  
 ora@spike.dor.state.co.us

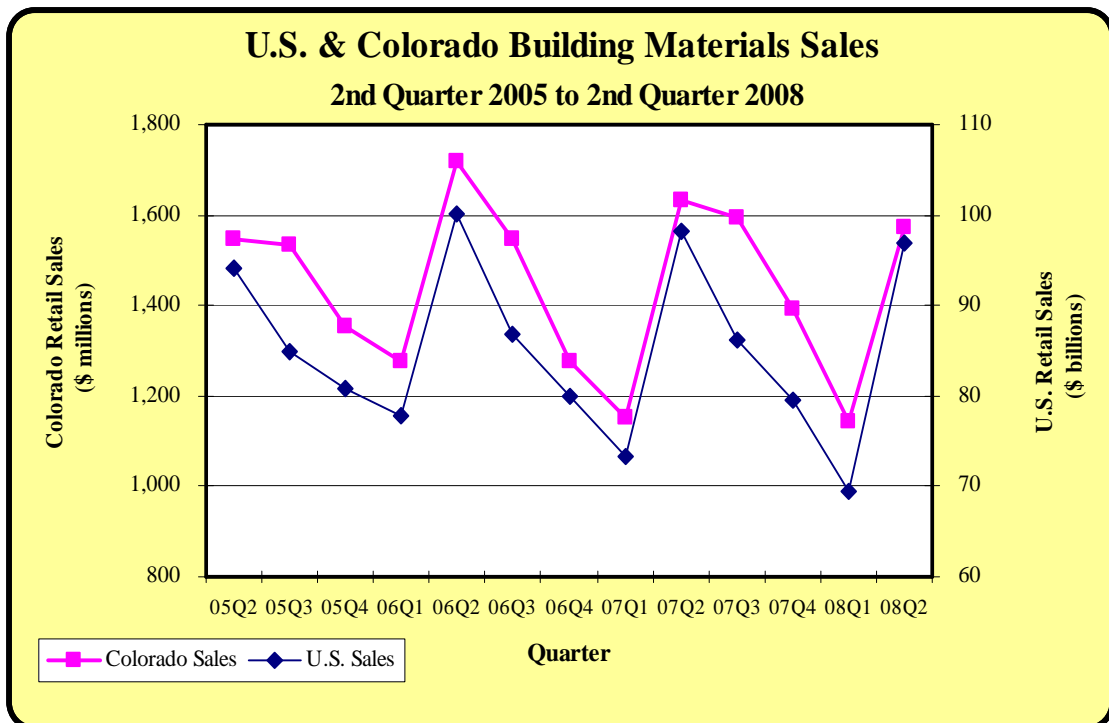
**Colorado Building Material Sales**  
**Selected Counties**

**Second Quarter 2008**

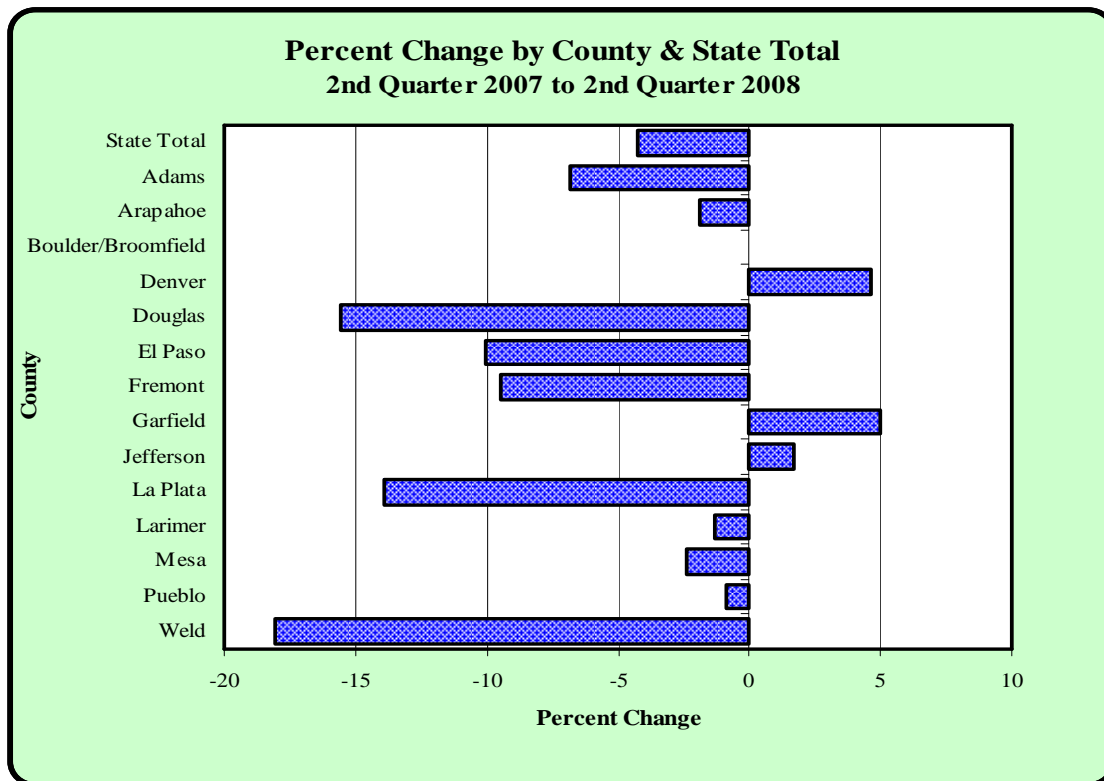
This issue presents data on Colorado building materials sales for the second quarter 2008. This report shows retail sales for each of the seven Denver metro area counties and for the counties of El Paso, Fremont, Garfield, La Plata, Larimer, Mesa, Pueblo, and Weld. Broomfield County's sales are combined with those in Boulder County. The types of retailers included in the chart on the next page are home centers, paint and wallcovering stores, hardware stores, and specialized building material dealers. The period shown in this report is the second quarter of 2008 compared to the second quarter of 2007.

The graph below shows national versus Colorado retail sales. It is important to note that both the national and Colorado data in this graph include sales by outdoor equipment stores and nurseries as well as the categories listed in the above paragraph. Nationally, sales of building materials decreased 1.2 percent to \$97.0 billion in the second quarter 2008 over the second quarter 2007. Colorado's retail sales of \$1,435.7 million in second quarter 2008 were 4.2 percent below the same quarter from a year ago. The reader should also note the source of the national figures has been changed to unadjusted Census Bureau retail sales.

Sales in the counties comprising this report decreased 3.9 percent over last year. Ten of the 14 counties studied showed decreases over last year. Weld County's sales dropped 18.1 percent.



County	Retail Sales 2008Q2 \$000s	Retail Sales 2007Q2 \$000s	Percent Change
Adams	\$121,931	\$130,869	-6.8%
Arapahoe	157,467	160,506	-1.9
Boulder/Broomfield	88,310	88,332	-0.0
Denver	201,208	192,334	4.6
Douglas	94,041	111,342	-15.5
El Paso	141,945	157,855	-10.1
Fremont	10,246	11,317	-9.5
Garfield	31,556	30,059	5.0
Jefferson	125,341	123,284	1.7
La Plata	20,328	23,607	-13.9
Larimer	97,079	98,386	-1.3
Mesa	56,206	57,578	-2.4
Pueblo	39,319	39,671	-0.9
Weld	43,429	53,000	-18.1
<b>Selected Counties Total</b>	<b>\$1,228,404</b>	<b>\$1,278,141</b>	<b>-3.9%</b>
<b>State Total</b>	<b>\$1,435,690</b>	<b>\$1,499,115</b>	<b>-4.2%</b>



This report is available electronically as a .pdf file on the Department of Revenue's website at [http://www.revenue.state.co.us/stats\\_dir/wrap.asp?incl=retailsalesreport](http://www.revenue.state.co.us/stats_dir/wrap.asp?incl=retailsalesreport). It is also available as a Word document. If you would like to receive the report in Word, please contact the Office of Research and Analysis at 303-866-5777 or send an e-mail to [ora@spike.dor.state.co.us](mailto:ora@spike.dor.state.co.us).